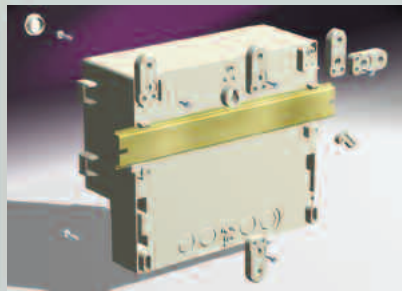
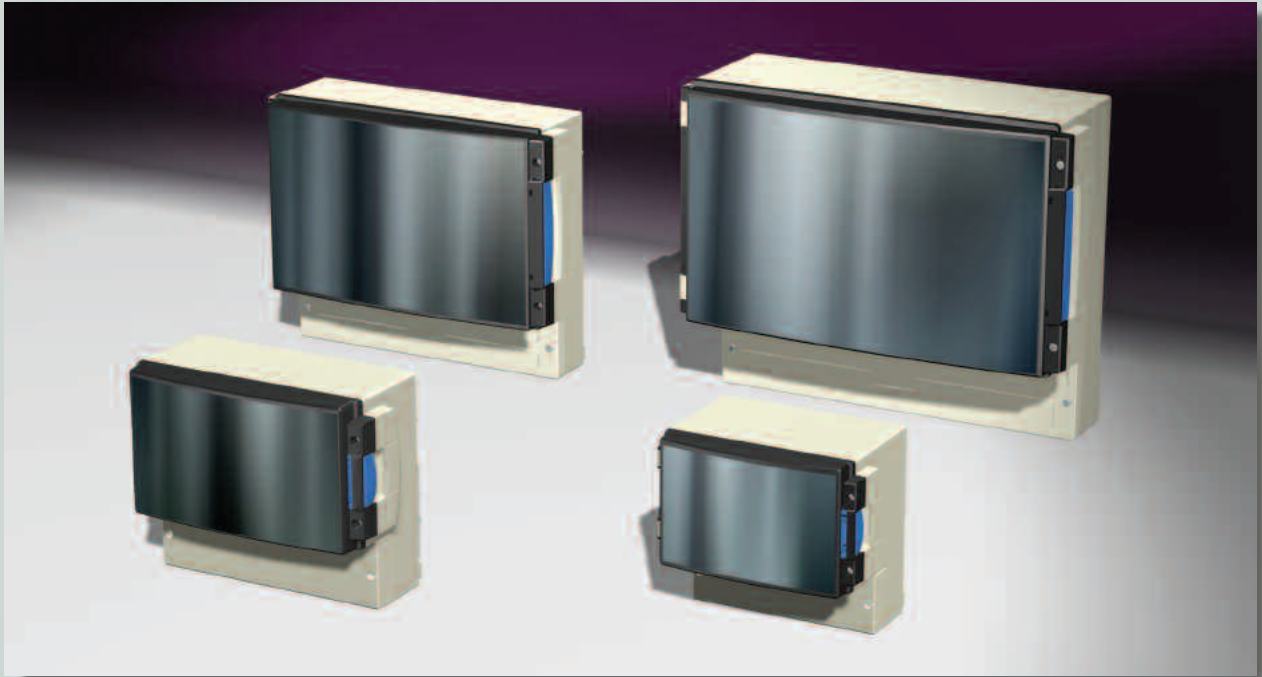


new

FIBOX[®] CARDMASTER 3







SAFE AND SECURE ENCLOSURE SOLUTIONS

- IP65 rated
- Impact resistant polycarbonate or ABS
- Improved locking system
- Separate compartment for terminal wiring
- New transparent door
- Variety of wall mounting options
- Built in PCB card guides
- Wide range of models, sizes and accessories

The all new, IP65 rated, Fibox Cardmaster 3 family of enclosures is designed to provide the ultimate solution to instrumentation packaging. Ideal for measurement, monitoring and process control equipment, Cardmaster 3 looks good and performs well. Modern, durable materials are combined with an improved locking system and transparent door options, to house and protect instrumentation and electronics. PCB guides, knock outs, a terminal wiring compartment and wall mounting options make installing and using a Cardmaster 3 easy.



	<p>ENCLOSURES WITHOUT MAIN COVER</p> <p>INCLUDING Enclosure base, terminal compartment cover and mounting screws.</p> <table border="1"> <thead> <tr> <th>Order symbol</th> <th>Size (mm)</th> </tr> </thead> <tbody> <tr> <td>PC 17/16-LC3</td> <td>166 x 160 x 80</td> </tr> <tr> <td>ABS 17/16-LC3</td> <td>166 x 160 x 80</td> </tr> <tr> <td>PC 17/16-C3</td> <td>166 x 160 x 105</td> </tr> <tr> <td>ABS 17/16-C3</td> <td>166 x 160 x 105</td> </tr> <tr> <td>PC 21/18-C3</td> <td>213 x 185 x 87</td> </tr> <tr> <td>ABS 21/18-C3</td> <td>213 x 185 x 87</td> </tr> <tr> <td>PC 30/25-C3</td> <td>296 x 256 x 92</td> </tr> <tr> <td>ABS 30/25-C3</td> <td>296 x 256 x 92</td> </tr> <tr> <td>PC 36/31-C3</td> <td>363 x 316 x 130</td> </tr> <tr> <td>ABS 36/31-C3</td> <td>363 x 316 x 130</td> </tr> </tbody> </table>	Order symbol	Size (mm)	PC 17/16-LC3	166 x 160 x 80	ABS 17/16-LC3	166 x 160 x 80	PC 17/16-C3	166 x 160 x 105	ABS 17/16-C3	166 x 160 x 105	PC 21/18-C3	213 x 185 x 87	ABS 21/18-C3	213 x 185 x 87	PC 30/25-C3	296 x 256 x 92	ABS 30/25-C3	296 x 256 x 92	PC 36/31-C3	363 x 316 x 130	ABS 36/31-C3	363 x 316 x 130
Order symbol	Size (mm)																						
PC 17/16-LC3	166 x 160 x 80																						
ABS 17/16-LC3	166 x 160 x 80																						
PC 17/16-C3	166 x 160 x 105																						
ABS 17/16-C3	166 x 160 x 105																						
PC 21/18-C3	213 x 185 x 87																						
ABS 21/18-C3	213 x 185 x 87																						
PC 30/25-C3	296 x 256 x 92																						
ABS 30/25-C3	296 x 256 x 92																						
PC 36/31-C3	363 x 316 x 130																						
ABS 36/31-C3	363 x 316 x 130																						
	<p>ENCLOSURES WITH SMOKED GREY TRANSPARENT COVER</p> <p>INCLUDING Enclosure base, transparent cover, terminal compartment cover, polyamide hinges, locking devices, wall fastening cover plug and mounting screws.</p> <table border="1"> <thead> <tr> <th>Order symbol</th> <th>Size (mm)</th> </tr> </thead> <tbody> <tr> <td>PC 17/16-L3</td> <td>166 x 160 x 106</td> </tr> <tr> <td>ABS 17/16-L3</td> <td>166 x 160 x 106</td> </tr> <tr> <td>PC 17/16-3</td> <td>166 x 160 x 134</td> </tr> <tr> <td>ABS 17/16-3</td> <td>166 x 160 x 134</td> </tr> <tr> <td>PC 21/18-3</td> <td>213 x 185 x 117</td> </tr> <tr> <td>ABS 21/18-3</td> <td>213 x 185 x 117</td> </tr> <tr> <td>PC 30/25-3</td> <td>296 x 256 x 123</td> </tr> <tr> <td>ABS 30/25-3</td> <td>296 x 256 x 123</td> </tr> <tr> <td>PC 36/31-3</td> <td>363 x 316 x 162</td> </tr> <tr> <td>ABS 36/31-3</td> <td>363 x 316 x 162</td> </tr> </tbody> </table>	Order symbol	Size (mm)	PC 17/16-L3	166 x 160 x 106	ABS 17/16-L3	166 x 160 x 106	PC 17/16-3	166 x 160 x 134	ABS 17/16-3	166 x 160 x 134	PC 21/18-3	213 x 185 x 117	ABS 21/18-3	213 x 185 x 117	PC 30/25-3	296 x 256 x 123	ABS 30/25-3	296 x 256 x 123	PC 36/31-3	363 x 316 x 162	ABS 36/31-3	363 x 316 x 162
Order symbol	Size (mm)																						
PC 17/16-L3	166 x 160 x 106																						
ABS 17/16-L3	166 x 160 x 106																						
PC 17/16-3	166 x 160 x 134																						
ABS 17/16-3	166 x 160 x 134																						
PC 21/18-3	213 x 185 x 117																						
ABS 21/18-3	213 x 185 x 117																						
PC 30/25-3	296 x 256 x 123																						
ABS 30/25-3	296 x 256 x 123																						
PC 36/31-3	363 x 316 x 162																						
ABS 36/31-3	363 x 316 x 162																						
	<p>ENCLOSURES WITH POLYCARBONATE FRONT FRAME</p> <p>INCLUDING Enclosure base, terminal compartment cover, closed PC frame front plate with cover screws and mounting screws.</p> <table border="1"> <thead> <tr> <th>Order symbol</th> <th>Size (mm)</th> </tr> </thead> <tbody> <tr> <td>PC 17/16-LFC3</td> <td>166 x 160 x 102</td> </tr> <tr> <td>PC 17/16-FC3</td> <td>166 x 160 x 115</td> </tr> <tr> <td>PC 21/18-FC3</td> <td>213 x 185 x 100</td> </tr> </tbody> </table>	Order symbol	Size (mm)	PC 17/16-LFC3	166 x 160 x 102	PC 17/16-FC3	166 x 160 x 115	PC 21/18-FC3	213 x 185 x 100														
Order symbol	Size (mm)																						
PC 17/16-LFC3	166 x 160 x 102																						
PC 17/16-FC3	166 x 160 x 115																						
PC 21/18-FC3	213 x 185 x 100																						
	<p>ENCLOSURES WITH INCH KNOCK-OUTS AND FRONT PLATE</p> <p>INCLUDING Enclosure base with inch knock-outs, transparent cover, front plate, terminal compartment cover, polyamide hinges, locking devices and mounting screws.</p> <table border="1"> <thead> <tr> <th>Order symbol</th> <th>Size (mm)</th> </tr> </thead> <tbody> <tr> <td>PC 21/18-3 USA</td> <td>213 x 185 x 117</td> </tr> <tr> <td>PC 30/25-3 USA</td> <td>296 x 256 x 123</td> </tr> <tr> <td>PC 36/31-3 USA</td> <td>363 x 316 x 162</td> </tr> </tbody> </table>	Order symbol	Size (mm)	PC 21/18-3 USA	213 x 185 x 117	PC 30/25-3 USA	296 x 256 x 123	PC 36/31-3 USA	363 x 316 x 162														
Order symbol	Size (mm)																						
PC 21/18-3 USA	213 x 185 x 117																						
PC 30/25-3 USA	296 x 256 x 123																						
PC 36/31-3 USA	363 x 316 x 162																						



ACCESSORIES			
	Product/size	Order symbol	Size mm
BACK PANELS			
		MP 17/16	136 x 133
		MP 21/18	200 x 142
		MP 30/25	282 x 215
		MP 36/31	345 x 285
FRONT PLATES			
	17/16	FP 17/16	160 x 100
	21/18	FP 21/18	207 x 119
	30/25	FP 30/25	290 x 190
	36/31	FP 36/31	351 x 225
FRONT PLATE FRAMES, IP 65			
		FC PC 17/16	166 x 106 x 10
	Screw fastening, polycarbonate	FC PC 21/18	213 x 125 x 12
COVERS			
	17/16	CM 17/16-3T	166 x 106 x 29
	21/18	CM 21/18-3T	213 x 125 x 30
	30/25	CM 30/25-3T	296 x 196 x 36
	36/31	CM 36/31-3T	363 x 271 x 36
HINGE AND LATCH SETS			
		SET 17/16-21/18-3	
		SET 30/25-3	
		SET 36/31-3	
WALL MOUNTING LUG			
		FP 10674	
DIN-RAIL SUPPORT			
		MB 20064 SET	

www.fibox.com



Fibox Oy Ab, Jorvaksenniitty, P.O.Box 16, FI-02421 Jorvas, Finland
Tel int. +358 9 295 531 Fax +358 9 2955 3200 Email info@fibox.fi, sales@fibox.fi



Sample photo

Order symbol: PC 21/18-3
Product nbr: 7525154

EAN: 6418074056733

Description: Enclosure, PC
Remarks: Smoked transparent cover

Including: Base, terminal compartment cover with EPDM gasket and screws for mounting plate/DIN-rail. -3 and -L3 versions: Smoked transparent cover with PUR gasket, hinges, locking devices; FC version: Closed PC frame front plate with PUR gasket and cover screws.

Dimensions:		L	W	H	Rating:
mm:		213	185	118	Ingress Protection (EN 60529): IP 65
inch:		8.4	7.3	4.6	Impact Resistance (EN 50102): IK 08/07
Materials:					Electrical insulation: Totally insulated
Material:	PC				Halogen free (DIN/VDE 0472, Part 815): Yes
Base colour:	RAL 7035				UV resistance: UL 508
Cover colour:	Smoked grey				Flammability Rating (UL 746 C 5): UL 94 5V
Gasket material:	EPDM and Polyurethane				Glow Wire Test (IEC 695-2-1) °C: 960
Temperatures:					NEMA Class: NEMA 1, 3, 3R, 4X, 12, 13
Short term:	-40 ... 120 °C				Certificates:
Continuous:	-40 ... 80 °C				Underwriters Laboratories
Short term:	-40 ... 250 °F				Fimko
Continuous:	-40 ... 175 °F				Europe EN 50298 1998
Accessories:					UL Canada
MP 21/18	Mounting plate				Gost R
FP 21/18	Front plate				
CM 21/18-3T	Cover				
SET 17/16-21/18-3	Set of hinges and latches				

