

HDTV VIDEO PANELS

HDTV TRANSMISSION LINE NETWORK PRODUCT SOLUTIONS—ALL TRUE 75 OHM

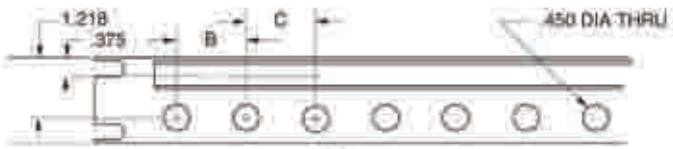


FIG A

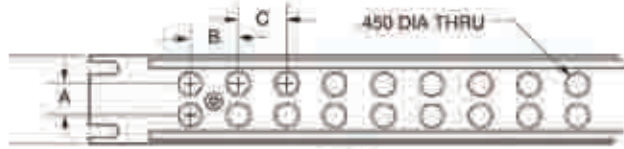


FIG B

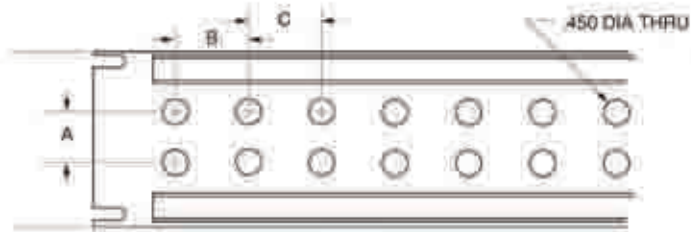


FIG C

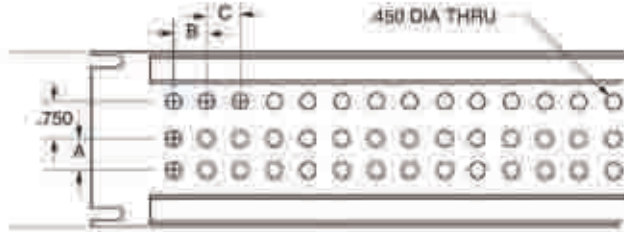


FIG D

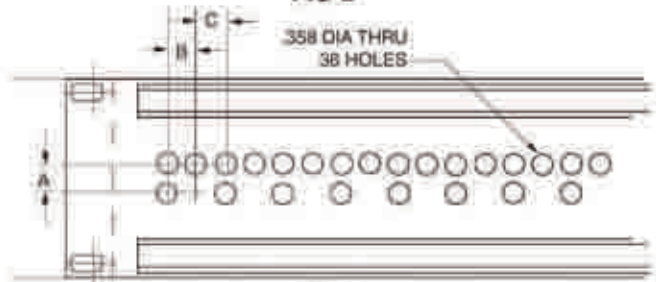


FIG E

Ordering Fully Loaded Panels...

Panels can be ordered pre-loaded with any compatible jacks without additional labor charge by using the following part number format (provided the mechanical restrictions are recognized). Contact factory for assistance.

Example: JSIB48/HDVDPT; 48 Hole Spacing, Insulated Black Phenolic Panel (JSIB-48), Loaded with twenty four (24) Serial Digital Normal-thru Terminated Video Patch Jacks (HDVDPT)

Sample Panel Part Number: JS (I) (B) - 48/HDVDPT

JS: Non-Insulated Aluminum Panel (grey)
 JSI: Insulated Aluminum Panel (grey)
 JSIB: Insulated Phenolic Panel (black)

Number of Holes
 Patch Jack Part Number

DIALOG BOX

TWO CHANGES - DIGITAL AND BANDWIDTH PIXEL COUNTS

TYPE	VERTICAL LINES	HORIZONTAL LINES	DATA RATE IN Gbps
NTSC	525	487	Analog
SDTV	480	640	.270
DTV-W	480	704	.270
HDTV	1080	1920	1.485

Gbps = gigabits per second

HDTV VIDEO PANELS

HDTV TRANSMISSION LINE NETWORK PRODUCT SOLUTIONS - ALL TRUE 75 OHM

Standard 19" Panels...Insulated, Non-Insulated

See page 9 for panel figures.

# of Holes	Panel Height	Hole Spacing			(foot) note	Fig	•DS Strip	Gray Aluminum		Black Phenolic
		A	B	C				Non-Insulated Part #	Insulated Part #	Insulated Phenolic Part#
1.75 Inch Standard Size Panels (1 Rack Unit)										
12	1.75	-	1.43	1.43	1	A	DS1	JS-12	JSI-12	
14	1.75	-	1.21	1.21	1	A	DS1	JS-14	JSI-14	
16	1.75	-	1.00	1.00	1	A	DS1	JS-16	JSI-16	
20	1.75	-	.830	.830	1	A	DS1	JS-20	JSI-20	
24	1.75	-	.625	.750	1	A	DS1	JS-24S	JSI-24S	JSIB-24S
26	1.75	-	.625	.625	1	A	DS1	JS-26	JSI-26	
28	1.75	-	.625	.625	1	A	DS7	JS-28	JSI-28	
32	1.75	.625	1.00	1.00	2	B	DS4	JS-32S	JSI-32S	JSIB-32S
40	1.75	.625	.830	.830	2	B	DS4	JS-40S	JSI-40S	JSIB-40S
48	1.75	.625	.625	.750	2	B	DS4	JS-48S	JSI-48S	JSIB-48S
52	1.75	.625	.625	.625	2	B	DS4	JS-52S	JSI-52S	JSIB-52S
56	1.75	.625	.625	.625	2	B	155-0218-24 DS4	JS-56S	JSI-56S	JSIB-56S

3.50 Inch Standard Size Panels (2 Rack Units)

24	3.50	.625	1.43	1.43	2	C	DS1	JS-24L	JSI-24L	
24	3.50	1.00	1.43	1.43	1	C	DS1	JS-24W	JSI-24W	
28	3.50	.625	1.21	1.21	2	C	DS1	JS-28A	JSI-28A	
28	3.50	1.00	1.21	1.21	1	C	DS1	JS-28W	JSI-28W	
30	3.50	.625	1.125	1.125	2	C	DS1	JS-30	JSI-30	
30	3.50	1.00	1.125	1.125	1	C	DS1	JS-30W	JSI-30W	
32	3.50	.625	1.00	1.00	2	C	DS1	JS-32A	JSI-32A	JSIB-32A
32	3.50	1.00	1.00	1.00	1	C	DS1	JS-32W	JSI-32W	
36	3.50	.625	.625	.750	2	E	DS1	JS-36	JSI-36	
36	3.50	.625	.830	.830	2	C	DS1	JS-36A	JSI-36A	
40	3.50	.625	.830	.830	2	C	DS1	JS-40	JSI-40	JSIB-40
40	3.50	1.00	.830	.830	1	C	DS1	JS-40W	JSI-40W	JSIB-40W
48	3.50	.625	.625	.750	2	C	DS1	JS-48	JSI-48	JSIB-48
48	3.50	.625	.625	.625	2	C	DS1	JS-48A	JSI-48A	JSIB-48A
48	3.50	1.00	.625	.750	1	C	DS1	JS-48W	JSI-48W	
52	3.50	1.00	.625	.625	1	C	DS7	JS-52W	JSI-52W	JSIB-52W
52	3.50	.625	.625	.625	2	C	DS1	JS-52	JSI-52	JSIB-52
56	3.50	.625	.625	.625	2	C	DS7	JS-56	JSI-56	JSIB-56
56	3.50	1.00	.625	.625	1	C	DS7	JS-56W	JSI-56W	
72	3.50	.625	.680	.680	3	D	DS1	JSS-72	JSIS-72	JSISB-72

Dimensions are in inches. Jacks sold separately.

•DS stands for designation strip - Only applies to JS and JSI part numbers. Does not apply to phenolic panels (JSIB, JSIX)

Notes:

- 1: Will not accept dual jacks, single barrel jacks only (J3W)
- 2: Will accept dual or single barrel jacks.
- 3: Will accept 3 barrel jack only (J25W).

Standard Designation Strips
For JS, JSI, JSIS Part Numbers Only

For JSIB Panels Figures B and C have .459 diameter typ.

For Phenolic Panel (JSIB) Designation Strips Contact the Factory

