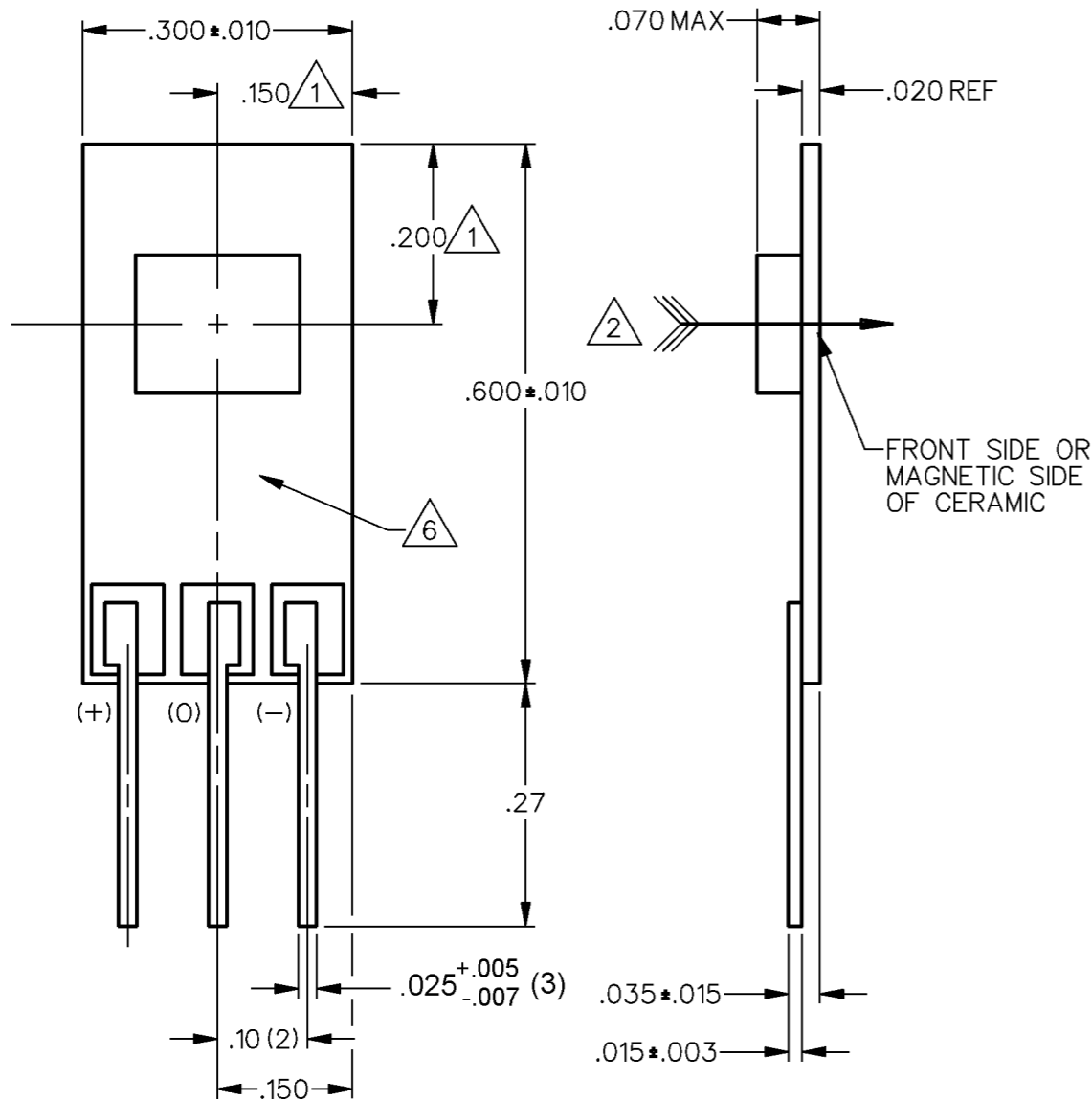
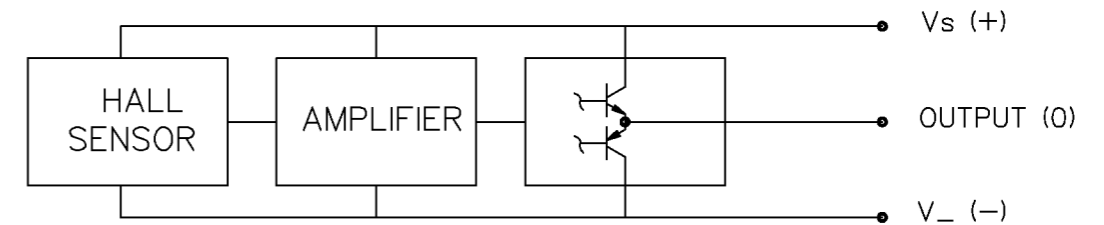


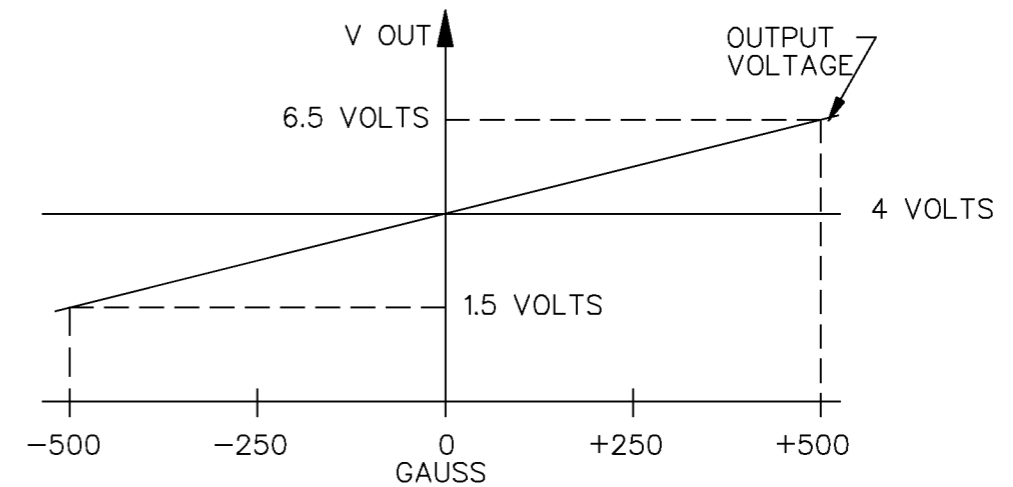
**OPERATING CHARACTERISTICS**

PARAMETER	MIN	TYP	MAX	UNITS	CONDITIONS/REMARKS
SUPPLY VOLTAGE	6.6	8.0	12.6	VOLTS	-40°C TO +125°C
SUPPLY CURRENT		13	30	mA	MAX @ 12.6 V @ -40°C
OUTPUT CURRENT			1	mA	SINKING OR SOURCING
OUTPUT SPAN		.625 V <sub>S</sub>		VOLTS	-500G TO +500G @ 25°C /5\
SENSITIVITY	4.90	5.0	5.10	mV/g	@ 8.0 V <sub>S</sub> & 25°C
LINEARITY	-1.5	-.8	0	% OF SPAN	DEV FROM STR LINE THRU -500 AND +500
V <sub>OUT</sub> @ 0 GAUSS	3.960	4.000	4.040	VOLTS	25°C
TEMP ERROR-NULL	-.02		+.02	%/°C	-40°C TO +125°C
TEMP ERROR-GAIN	-.02		+.02	%/°C	-40°C TO +125°C

**BLOCK DIAGRAM CURRENT SINKING OR SOURCING OUTPUT**



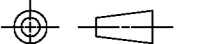
**NOMINAL TRANSFER CHARACTERISTICS AT 8.0 VDC**



**NOTES**

- 1 CENTERLINE OF HALL CELL (IC) ONLY. THE LOCATION OF THE CERAMIC COVER IS SPECIFIED
- 2 THE + MAGNETIC FLUX IS IN THIS DIRECTION (THIS ASSUMES THE CONVENTION THAT THE DIRECTION OF THE EXTERNAL FLUX OF A MAGNET IS FROM THE NORTH TO THE SOUTH POLE OF THE MAGNET)
- 3 - THE DEVICE CANNOT BE DAMAGED BY MAGNETIC OVERDRIVE
- 4 - OUTPUT TYPE - RATIOMETRIC
- 5 THE OUTPUT IS CLAMPED AT 9.0 VDC MINIMUM, 9.5 VDC TYPICAL
- 6 ARTWORK TYPICAL

THIRD ANGLE PROJECTION



SCALE 5 : 1

DO NOT SCALE PRINT

**UNLESS OTHERWISE SPECIFIED TOLERANCES ARE**

- ONE PLACE (.0) ±.030
- TWO PLACE (.00) ±.015
- THREE PLACE (.000) ±.005
- ANGLES ±

WEIGHT



CATALOG LISTING  
**SS94A1**  
PAGE 1 OF 1

ISSUE 8

REVISIONS	DATE	BY	CHK
A	CO64262	J A S	13 SEPT 88
B	CO72441	J A S	18 MAY 92
C	CO95704	DLM	21 MAR 00
D	0038694	SSK	11 APR 08
E	0039911	SS	19 MAY 08

RELEASE NO. DR-3524  
REPLACES X83052-SS  
CHECK BLR 19MAY08  
CHECK BLR 13 SEPT 88  
CHECK D A W 13 SEPT 88

RASTER  
DRAWN