

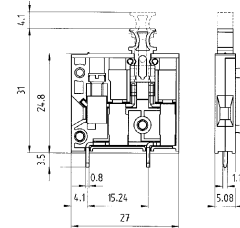
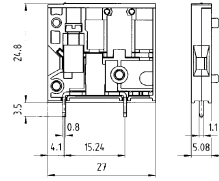
PCB terminal, rising cage clamp system pitch 5.08 mm

wielcon

Rated cross section:
4.0 mm² single core/
2.5 mm² finely stranded

Rated current Type 8276: 26 A
Rated current Type 8276 TKS: 15 A

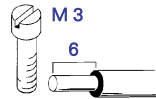
Wire range:
0.14 – 4.0 mm² single core/
0.14 – 2.5 mm² finely stranded



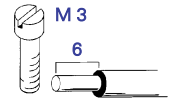
250 V/4 kV/3 – Overvoltage category III
400 V/4 kV/2 – Overvoltage category II
1000 V/4 kV/1 – Overvoltage category I



Solder pin 0.8 x 1.1 mm
Drill hole Ø 14 mm



Solder pin 0.8 x 1.1 mm
Drill hole Ø 14 mm



Rated voltages VDE 0110
UL Data
CSA Data
Approvals

field/factory wiring

Type 8276
modular terminal
No. 30 – 14 AWG
No. 30 – 14 AWG

300 V 15/23 A
300 V 20 A

Type 8276 TKS
disconnect terminal
No. 30 – 14 AWG
No. 30 – 14 AWG

300 V 15 A
300 V 15 A

| | Type | Part No. | Box Qty | Type | Part No. | Box Qty |
|---|---|---------------|---------|--|---------------|---------|
| pitch 5.08 mm | | | | | | |
| Individual poles connected in series 1 pole | 8276 | 25.720.1353.0 | 100 | 8276 TKS | 25.720.1453.0 | 100 |
| Pole numbers latched together on request | | | | | | |
| Accessories | | | | | | |
| Adhesive marking strips | | | | | | |
| | 1 – 12 | 04.007.4089.0 | 1 | 1 – 12 | 04.007.4089.0 | 1 |
| | 13 – 24 | 04.007.4189.0 | 1 | 13 – 24 | 04.007.4189.0 | 1 |
| | 25 – 36 | 04.007.4289.0 | 1 | 25 – 36 | 04.007.4289.0 | 1 |
| | 37 – 48 | 04.007.4389.0 | 1 | 37 – 48 | 04.007.4389.0 | 1 |
| | 49 – 60 | 04.007.4489.0 | 1 | 49 – 60 | 04.007.4489.0 | 1 |
| | 61 – 72 | 04.007.4589.0 | 1 | 61 – 72 | 04.007.4589.0 | 1 |
| | 73 – 84 | 04.007.4689.0 | 1 | 73 – 84 | 04.007.4689.0 | 1 |
| | 85 – 96 | 04.007.4789.0 | 1 | 85 – 96 | 04.007.4789.0 | 1 |
| | 97 – 108 | 04.007.4889.0 | 1 | 97 – 108 | 04.007.4889.0 | 1 |
| Test plug red | ST 2/2,3 | Z5.553.2921.0 | 10 | ST 2/2,3 | Z5.553.2921.0 | 10 |
| | Materials Type 8276 Insulating housing: PA 66/6 grey, UL 94-V0 Clamping part: nickel plated brass Contact and solder pin: tin plated E-Cu Clamping screw: galvanised steel | | | Materials Type 8276 TKS Insulating housing: PA 66/6 grey, UL 94-V0 Disconnect component: PA 66/6 orange, UL 94-V-0 Clamping part: nickel plated brass Contact spring and solder pin: special copper alloy, tin plated steel Clamping screw: galvanised steel Isolating blade: tin plated E-Cu | | |