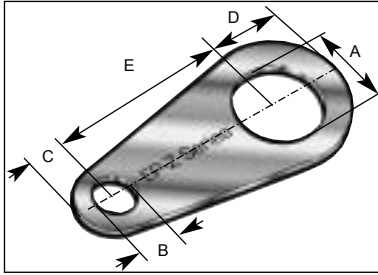


## Earth Tags

### Pear Shape



**EP-Z Series** Earth Tags are used to provide an earth-bond connection for an entry component.

**Available Sizes:** Metric, NPT, NPSM, ISO Pipe (BSP), PG, ET

**Materials:** Brass, 316 Stainless Steel, Aluminium,

**Plating:** Nickel, Zinc, other on application

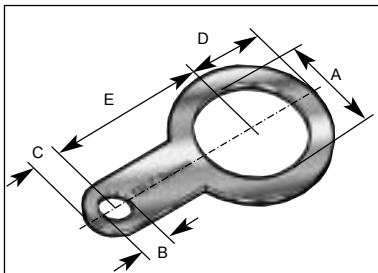
**CE Conformity:** Please refer to *European Directives & CE Marking*

**Part Number:** Please refer to *Part Numbering System*

### Dimensions of Metric and NPT Versions

| Size       | Thickness | B    | C    | D    | E     | Short Circuit Rating kA |
|------------|-----------|------|------|------|-------|-------------------------|
| A          |           |      |      |      |       |                         |
| M16        | 1.4       | 7.0  | 7.0  | 13.5 | 35.3  | 3.06                    |
| M20        | 1.4       | 7.0  | 7.0  | 13.5 | 35.3  | 3.06                    |
| M25        | 1.4       | 10.5 | 10.0 | 18.5 | 41.4  | 4.00                    |
| M32        | 1.4       | 12.0 | 13.0 | 23.3 | 53.9  | 5.40                    |
| M40        | 1.4       | 14.0 | 17.5 | 26.3 | 60.0  | 7.20                    |
| M50        | 1.4       | 14.0 | 17.5 | 32.1 | 76.1  | 10.40                   |
| M63        | 1.4       | 14.0 | 17.5 | 39.5 | 84.0  | 10.40                   |
| M75        | 1.4       | 14.0 | 17.5 | 44.0 | 94.5  | 10.40                   |
| M80        | 2.0       | 14.0 | 24.0 | 62.5 | 95.3  | 10.40                   |
| M85        | 2.0       | 14.0 | 24.0 | 62.5 | 95.3  | 10.40                   |
| M90        | 2.0       | 14.0 | 24.0 | 62.5 | 95.3  | 10.40                   |
| M100       | 2.0       | 14.0 | 24.0 | 62.5 | 103.5 | 10.40                   |
| 1/2" NPT   | 1.4       | 7.0  | 7.0  | 15.0 | 34.9  | 3.06                    |
| 3/4" NPT   | 1.4       | 10.5 | 10.5 | 18.3 | 41.4  | 4.00                    |
| 1" NPT     | 1.4       | 12.0 | 12.0 | 13.1 | 22.9  | 5.40                    |
| 1 1/4" NPT | 1.4       | 14.0 | 17.5 | 26.7 | 63.5  | 7.20                    |
| 1 1/2" NPT | 1.4       | 14.0 | 17.5 | 32.1 | 76.1  | 10.40                   |
| 2" NPT     | 1.4       | 14.0 | 17.5 | 39.6 | 84.0  | 10.40                   |
| 2 1/2" NPT | 1.4       | 14.0 | 17.5 | 44.1 | 95.3  | 10.40                   |
| 3" NPT     | 2.0       | 14.0 | 23.7 | 62.5 | 103.5 | 10.40                   |

### Banjo Shape



**EB-Z Series** Earth Tags are used to provide an earth-bond connection for an entry component.

**Available Sizes:** Metric, NPT, NPSM, ISO Pipe (BSP), PG, ET

**Materials:** Brass, 316 Stainless Steel, Aluminium,

**Plating:** Nickel, Zinc, other on application

**CE Conformity:** Please refer to *European Directives & CE Marking*

**Part Number:** Please refer to *Part Numbering System*

### Dimensions of Metric and NPT Versions

| Size | Thickness | B    | C    | D    | E    | Short Circuit Rating kA |
|------|-----------|------|------|------|------|-------------------------|
| A    |           |      |      |      |      |                         |
| M16  | 1.4       | 6.7  | 6.5  | 13.0 | 31.4 | 3.06                    |
| M20  | 1.4       | 6.7  | 6.5  | 14.3 | 33.3 | 3.06                    |
| M25  | 1.4       | 6.7  | 6.5  | 17.5 | 36.4 | 4.00                    |
| M32  | 1.4       | 12.0 | 11.2 | 22.3 | 41.1 | 5.40                    |
| M40  | 1.4       | 13.5 | 16.2 | 25.5 | 41.7 | 7.20                    |
| M50  | 1.4       | 13.5 | 20.8 | 32.5 | 58.1 | 10.40                   |
| M63  | 1.4       | 13.5 | 20.8 | 41.3 | 66.7 | 10.40                   |
| M75  | 1.4       | 13.5 | 20.8 | 47.6 | 73.1 | 10.40                   |