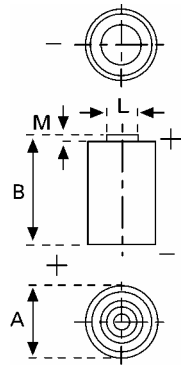


Data Sheet

**Type Number** ..... 6206  
**Designation IEC** ..... CR 15H270  
**System** ..... Li-Manganese dioxide / Organic Electrolyte

**UL Recognition:**..... MH 13654 (N)  
**Nominal Voltage** ..... 3 V  
**Typical Capacity C** ..... 850 mAh  
 Current 20 mA, at 20°C down to 1,8 V

**Weight (approx.)** ..... 11 g  
**Volume** ..... 5,2 ccm



**Temperature Ranges**

|                 |       |      |
|-----------------|-------|------|
|                 | min   | max. |
| Storage .....   | -20°C | 45°C |
| Discharge ..... | -20°C | 60°C |

**Dimensions**

|                           |      |      |
|---------------------------|------|------|
|                           | min  | max. |
| Diameter (A) .....        | 15,1 | 15,6 |
| Height (B) .....          | 26,3 | 27,0 |
| Shoulder Diameter[L]..... | 6,2  | 6,4  |
| Shoulder Height [M].....  | 0,7  | 1,3  |

**Segment** ..... Electronic

**Main Applications** ..... Photo  
 Electronic Devices

**Typical Capacities (at 20°C)**

| Discharge Type           | Discharge Current | End Voltage:    | 1,8 V |
|--------------------------|-------------------|-----------------|-------|
| Continuous<br>24h/d,7d/w | 20 mA             | Capacity [mAh]: | 850   |

All Data contained herein is for single cells  
 For battery applications, performance data may vary from single cell data, depending on specific battery configuration