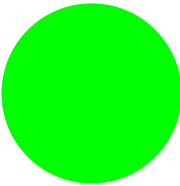


**LED element, front, green****Part no.****M22-LED-G****Article-No.****216559**

→Engineering

**Delivery programme**

Connection technique			Screw terminals
Fixing			Front fixing
Rated operational voltage	$U_e$	V	12 – 30 V AC/DC
Rated operational current	$I_e$	mA	8 – 15
Power consumption	$P_{max.}$	W	0.26 W at 24 V
Lifespan to EN 60064 at $t_a = +25\text{ °C}$	$t_{mean}$ (AC)	h	100000
Colour			
Colour			Green

**Notes**

For pushbutton actuators, indicator lights, illuminated pushbuttons and illuminated selector switch actuators, the following applies:

M22...-R only in combination with M22-LED...-R

M22...-G only in combination with M22-LED...-G

M22...-W only in combination with M22-LED...-W

M22...-Y only in combination with M22-LED...-W

M22...-B in combination with M22-LED...-W or M22-LED...-B

**General**

Standards			IEC/EN 60947 VDE 0660
Operating torque (screw terminals)		Nm	0.8
Protection type (IEC/EN 60529, EN50178, VBG 4)			IP20
Climatic proofing			Damp heat, constant, to IEC 60068-2-78 Damp heat, cyclic, to IEC 60068-2-30
Ambient temperature		°C	
Open		°C	– 25 ... 70
Storage		°C	– 40 - + 80
Mounting position			As required
Mechanical shock resistance according to IEC 60068-2-27 Shock duration 11 ms, half-sinusoidal		g	> 30
Terminal capacities		mm <sup>2</sup>	
Solid		mm <sup>2</sup>	0.75 – 2.5
Stranded		mm <sup>2</sup>	0.5 – 2.5

**Contacts**

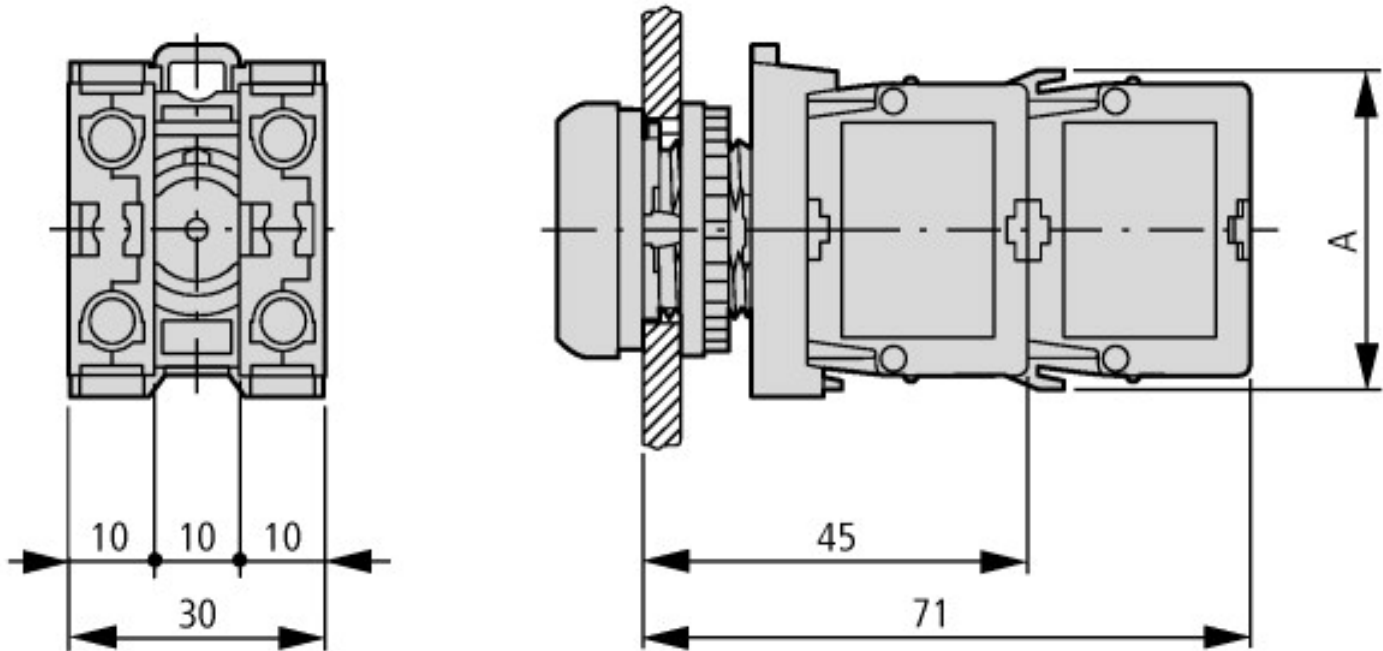
Rated impulse withstand voltage	$U_{imp}$	V AC	6000
Rated insulation voltage	$U_i$	V	500
Overvoltage category/pollution degree			III/3

### Notes

**Notes** > 200 V AC/60 Hz: -25/+55 °C

Indoor and protected outdoor installation

### Dimensions



Pushbutton with M22-(C)K...  
Pushbutton with M22-(C) LED... + M22-XLED...

### Additional product information (links)

#### Installation instructions

AWA1160-1745 The RMQ-Titan system

[ftp://ftp.moeller.net/DOCUMENTATION/AWA\\_INSTRUCTIONS/17450407.pdf](ftp://ftp.moeller.net/DOCUMENTATION/AWA_INSTRUCTIONS/17450407.pdf)