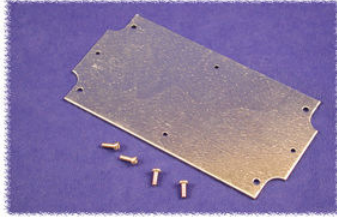
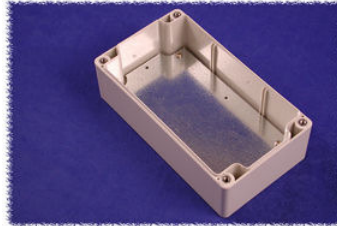


## Panels:



**Panel**



**Panel Mounted in Enclosure Body (Hardware included)**



**Panel Mounted in Lid (Hardware not included)**

- Heavy duty panels for mounting components.
- Mounts into brass inserts in the bottom of the enclosure using M3 x 8mm machine screws (Part No. **1591MM100** - pack of 100).
- Mounts into plastic standoffs in the lid of the enclosure using #6 x 1/4" machine screws (Part No. **1598ATS100** - pack of 100).
- Galvanized 16 ga. steel.
- Panel includes mounting hardware for enclosure body (M3 x 8mm machine screws).

Part No.	Use With...	Units	Length	Width
<b>1554BPL</b>	All 1554 & 1555 Series "B" size enclosures	mm	56	59
		inches	2.2	2.2
<b>1554CPL</b>	All 1554 & 1555 Series "C" & "D" size enclosures	mm	112	53
		inches	4.4	2.1
<b>1554EPL</b>	All 1554 & 1555 Series "E" size enclosures	mm	79	79
		inches	3.1	3.1
<b>1554FPL</b>	All 1554 & 1555 Series "F" & "G" size enclosures	mm	109	79
		inches	4.3	3.1
<b>1554HPL</b>	All 1554 & 1555 Series "H" & "T" size enclosures	mm	168	107
		inches	6.6	4.2
<b>1554JPL</b>	All 1554 & 1555 Series "J" & "K" size enclosures	mm	147	76
		inches	5.8	3.0
<b>1554NPL</b>	All 1554 & 1555 Series "N" & "P" size enclosures	mm	108	107
		inches	4.24	4.2
<b>1554RPL</b>	All 1554 & 1555 Series "R" & "S" size enclosures	mm	151	147
		inches	5.94	5.8
<b>1554UPL</b>	All 1554 & 1555 Series "U" size enclosures	mm	193	107
		inches	7.6	4.2
<b>1554VPL</b>	All 1554 & 1555 Series "V" size enclosures	mm	231	145
		inches	9.1	5.7