

Datasheet - AZM 170-11ZRKA 24 VAC/DC



Solenoid interlock / AZM 170



- thermoplastic enclosure
- Double-insulated
- Compact design
- 90 mm x 84 mm x 30 mm
- 1 Cable entry M 20 x 1.5
- Interlock with protection against incorrect locking.
- Long life
- High holding force
- IDC method of termination
- Manual release

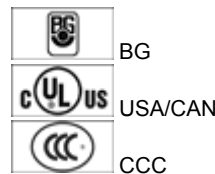
(Minor differences between the printed image and the original product may exist!)

Ordering details

Product type description	AZM 170-11ZRKA 24 VAC/DC
Article number	1140796
EAN code	4030661119847

Approval

Approval




Classification

Standards	EN ISO 13849-1
B _{10d} Opener (NC)	2.000.000
Mission time	20 Years
notice	$MTTF_d = \frac{B_{10d}}{0,1 \times n_{op}}$ $n_{op} = \frac{d_{op} \times h_{op} \times 3600 \text{ s/h}}{t_{zyklus}}$

Global Properties

Product name	AZM 170
--------------	---------

Standards	EN 60947-5-1, BG-GS-ET-19
Compliance with the Directives (Y/N) 	Yes
Number of actuating directions	2 piece
Active principle	electromechanical
Duty cycle	Magnet 100 %
Materials	
- Material of the housings	Plastic, glass-fibre reinforced thermoplastic, self-extinguishing
- Material of the contacts	Silver
Housing coating	None
Weight	278 g

Mechanical data

Design of electrical connection	IDC method of termination
Cable section	
- Min. Cable section	1 x 0,75 mm ²
- Max. Cable section	1 x 1.0 mm ² , flexible
Mechanical life	> 1.000.000 operations
Emergency unlocking device (Y/N)	No
Manual release (Y/N)	Yes
- bottom	
Emergency release (Y/N)	No
Latching force	30 N
Positive break force	8.5 N
positive break travel	11 mm
Clamping force F _{max}	1000 N
Max. Actuating speed	2 m/s

Ambient conditions

Ambient temperature	
- Min. environmental temperature	- 25°C
- Max. environmental temperature	+ 60°C
Protection class	IP67 to IEC/EN 60529

Electrical data

Design of control element	Normally open contact (NO), Opener (NC)
Switching principle	Creep circuit element
Number of auxiliary contacts	1 piece
Number of safety contacts	1 piece
Power to unlock	No
Power to lock	Yes
Rated control voltage U _s	24 VAC/DC
Power consumption	max. 10 W
Rated impulse withstand voltage U _{imp}	4 kV
Rated insulation voltage U _i	250 V
Thermal test current I _{the}	10 A
Utilisation category	AC-15: 230 V / 4 A, DC-13: 24 V / 4 A
Max. fuse rating	6 A gG D-fuse

ATEX

Explosion protection categories for gases	None
---	------

Explosion protected category for dusts

None

Miscellaneous data

Applications



sliding safety guard,



removable guard,



hinged safety guard

Dimensions

Dimensions of the sensor

- Width of sensor 90 mm
- Height of sensor 84 mm
- Length of sensor 30 mm

notice

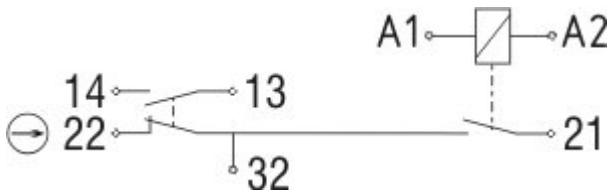
This type termination (IDC) method enables simple connection of flexible conductors without the need for the use of conductor ferrules

Individual coding available on request

Manual release

- For manual release using M5 triangular key, available as accessory

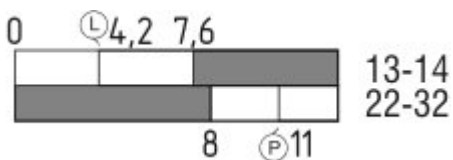
Diagram



Note Diagram

- positive break NC contact
- active
- no active
- Normally-open contact
- Normally-closed contact

Switch travel diagram



Notes Switch travel diagram

- Contact closed
- Contact open
- Setting range
- Break point
- Positive opening sequence/- angle
- VS** adjustable range of NO contact

VÖ adjustable range of NC contact
N after travel

Ordering suffix

The applicable ordering suffix is added at the end of the part number of the safety switch.
Order example: AZM 170-11ZRKA 24 VAC/DC-**1637**

...- 1637	0,3 µm gold-plated contacts
... ST-2431	connector M12 , Individual solenoid monitoring

Ordering code

AZM 170(1)-(2)Z(3)K(4)-(5)-(6)-(7)

(1)

without IDC method of termination
SK Screw connection

(2)

11 1 Normally open contact (NO) / 1 Opener (NC)
02 2 Opener (NC)
12/0.0 1 Normally open contact (NO), 2 Opener (NC) / -

(3)

without Latching force 5 N
R Latching force 30 N
I Individual coding

(4)

without Power to unlock
A Power to lock

(5)

without cable gland
ST Connector M12 x 1
ST-2431 Connector M12 x 1, Individual solenoid monitoring

(6)

24VAC/DC U_s 24 VAC/DC
110VAC U_s 110 VAC
230VAC U_s 230 VAC

(7)

without Manual release
2197 Manual release from side (Power to unlock)
1637 gold-plated contacts

AZM 170ST and AZM 170SK

AZM 170ST-(1)Z(2)K(3)-(4)-(5)-024

AZM 170SK-(1)Z(2)K(3)-(4)-(5)-024

(1)

11/11 1 Normally open contact (NO), 1 Opener (NC) / 1 Normally open contact (NO), 1 Opener (NC)
11/02 1 Normally open contact (NO), 1 Opener (NC) / 2 Opener (NC)
12/00 1 Normally open contact (NO), 2 Opener (NC) / -
12/11 1 Normally open contact (NO), 2 Opener (NC) / 1 Normally open contact (NO), 1 Opener (NC)
12/02 1 Normally open contact (NO), 2 Opener (NC) / 2 Opener (NC)

02/01	2 Opener (NC), - / 1 Opener (NC), -
02/10	2 Opener (NC), - / 1 Normally open contact (NO), -
(2)	
<i>without</i>	Latching force 5 N
R	Latching force 30 N
(3)	
<i>without</i>	Power to unlock
A	Power to lock
(4)	
1637	gold-plated contacts
(5)	
2197	Manual release for Power to unlock

Documents

Operating instructions and Declaration of conformity (jp) 709 kB, 14.04.2011
http://127.0.0.1/Bilddata/Azm/Pdf/Azm170/bedien/azm170/jp/mrl_azm170_jp.pdf

Operating instructions and Declaration of conformity (es) 665 kB, 25.03.2010
http://127.0.0.1/Bilddata/Azm/Pdf/Azm170/bedien/azm170/es/mrl_azm170_es.pdf

Operating instructions and Declaration of conformity (en) 746 kB, 12.03.2010
http://127.0.0.1/Bilddata/Azm/Pdf/Azm170/bedien/azm170/en/mrl_azm170_en.pdf

Operating instructions and Declaration of conformity (fr) 670 kB, 01.07.2010
http://127.0.0.1/Bilddata/Azm/Pdf/Azm170/bedien/azm170/fr/mrl_azm170_fr.pdf

Operating instructions and Declaration of conformity (nl) 720 kB, 23.09.2010
http://127.0.0.1/Bilddata/Azm/Pdf/Azm170/bedien/azm170/nl/mrl_azm170_nl.pdf

Operating instructions and Declaration of conformity (de) 573 kB, 18.02.2011
http://127.0.0.1/Bilddata/Azm/Pdf/Azm170/bedien/azm170/de/mrl_azm170_de.pdf

Operating instructions and Declaration of conformity (it) 645 kB, 09.04.2010
http://127.0.0.1/Bilddata/Azm/Pdf/Azm170/bedien/azm170/it/mrl_azm170_it.pdf

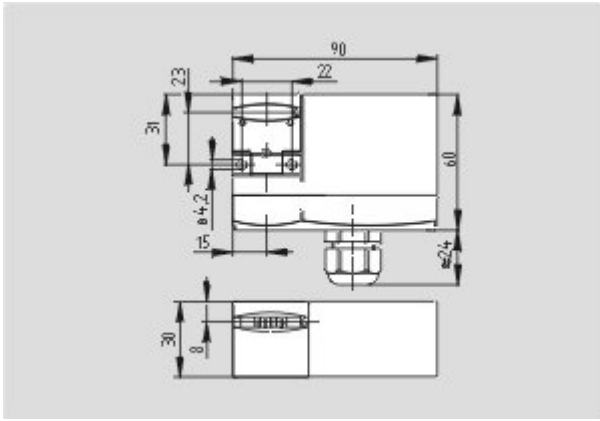
BG-test certificate (en) 574 kB, 05.01.2011
http://127.0.0.1/Bilddata/Azm/Pdf/Azm170/baumuste/z_m17p02.pdf

BG-test certificate (de) 589 kB, 05.01.2011
http://127.0.0.1/Bilddata/Azm/Pdf/Azm170/baumuste/z_m17p01.pdf

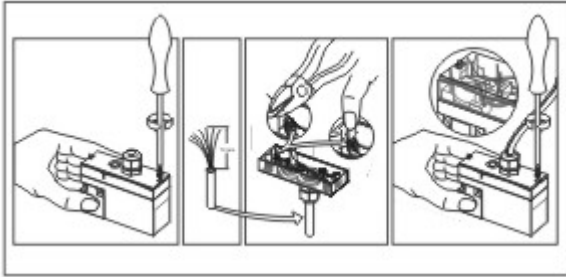
CCC certification (en) 747 kB, 12.12.2006
http://127.0.0.1/Bilddata/Azm/Pdf/Azm161/zertifikat/q_371p02.pdf

CCC certification (cn) 725 kB, 12.12.2006
http://127.0.0.1/Bilddata/Azm/Pdf/Azm161/zertifikat/q_371p03.pdf

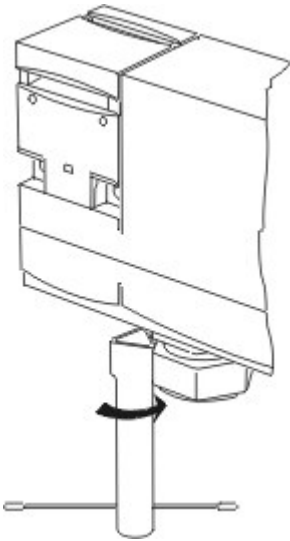
Images



Dimensional drawing (basic component)



Assembly example



Detail photo

System components

Actuator



1122893 - AZ 17/170-B1

- Particularly suitable for sliding doors

1137406 - AZ 17/170-B1-2245

- Damps vibration on guard device



1122895 - AZ 17/170-B5

- Particularly suitable for hinged guards (front mounting)



1139788 - AZ 17/170-B11

- Particularly suitable for sliding doors



1139789 - AZ 17/170-B15

- Particularly suitable for hinged guards (front mounting)



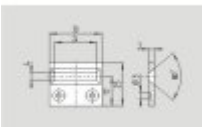
1123391 - AZM 170-B6

- For very small actuating radii
- The direction of actuation can be selected by applicable insertion of the insert



Accessories**1208493 - AZM 170-B CENTERING GUIDE**

- for AZ 17 and AZM 170



1100887 - TRIANGULAR KEY M5

- For manual release using M5 triangular key, available as accessory
- For maintenance, installation, etc.

