

Aluminium standard enclosures

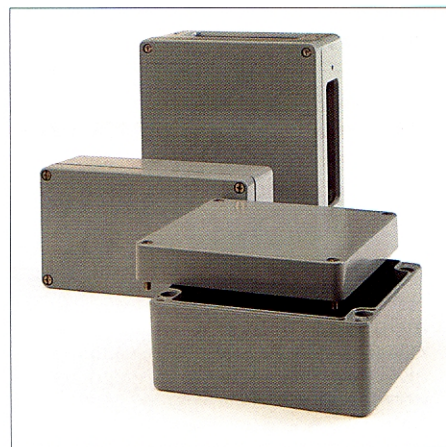
Product group
01/11

Aluminium flange enclosures

- Robust aluminium enclosure for mechanical and automation engineering
- Standard enclosures prepared for acceptance of DIN rail and mounting plates
- Flange enclosures with 4, 6 or 8 flange openings
- Field enclosure with exposed external fixing

Included in delivery:

Aluminium diecast enclosure consisting of cover, seal, incl. captive +/-stainless steel screws, lower section with 2 or 4 earthing screws, flange enclosures with flange openings (please order flange plates separately)



Technical data

Material	Al Si 12, DIN 1725
Ingress protection	Standard: IP 66 to EN 60529 Flange: IP 65 to EN 60529
Impact resistance	>7 Joule to EN 50014
Temperature resistance	PUR (polyurethane) seal: -40°C to +90°C CR (chloroprene) seal: -40°C to +100°C VMQ (silicone) seal (optional): -60°C to +130°C
Painting	powder coating
Colour	silver grey, RAL 7001, special paint on request

Programme range

Order No.	W x L x H (mm)	Order No.	W x L x H (mm)	Order No.	W x L x H (mm)
Standard enclosures					
01.05 05 03	45 x 50 x 30	01.12 22 08	120 x 220 x 80	01.23 20 18	230 x 200 x 180
01.06 06 03	64 x 58 x 34	01.12 22 09	120 x 220 x 90	01.23 28 11	230 x 280 x 110
01.06 10 03	64 x 98 x 34	01.12 22 12	120 x 220 x 120	01.23 33 11	230 x 330 x 110
01.06 15 03	64 x 150 x 34	01.12 36 08	120 x 360 x 80	01.23 33 18	230 x 330 x 180
01.06 19 03	64 x 185 x 34	01.14 14 09	140 x 140 x 90	01.23 40 11	230 x 400 x 110
01.08 08 06	80 x 75 x 57	01.14 20 09	140 x 200 x 90	01.23 40 23	230 x 400 x 224
01.08 13 06	80 x 125 x 57	01.16 16 09	160 x 160 x 90	01.23 60 11	230 x 600 x 110
01.08 18 06	80 x 175 x 57	01.16 26 09	160 x 260 x 90	01.31 40 11	310 x 400 x 110
01.08 25 05	80 x 250 x 52	01.16 36 09	160 x 360 x 90	01.31 40 14	310 x 400 x 140
01.10 10 08	100 x 100 x 80	01.16 56 09	160 x 560 x 90	01.31 40 18	310 x 400 x 180
01.10 16 08	100 x 160 x 80	01.18 18 10	180 x 180 x 100	01.31 40 23	310 x 400 x 226
01.10 20 08	100 x 200 x 80	01.18 28 10	180 x 280 x 100	01.31 60 11	310 x 600 x 110
01.12 12 08	120 x 122 x 80	01.23 10 11	100 x 230 x 110	01.31 60 18	310 x 600 x 180
01.12 12 09	120 x 122 x 90	01.23 20 11	230 x 200 x 110	01.60 60 20	600 x 600 x 200

Flange enclosures	Flange openings	
11.23 20 11	230 x 200 x 110	4
11.23 28 11	230 x 280 x 110	4
11.23 40 11	230 x 400 x 110	6
11.23 60 11	230 x 600 x 110	8

Field enclosure with external fixing

01.06 12 00	64 x 115 x 34,5
01.06 19 00	64 x 186 x 34,5