

PARTS DIMENSION TABLE

parts no.	DIM. a	DIM. b	inner thread	outer thread
B	4.8	11.8	4#40	4#40
D	5.8	12.0	4#40	4#40
F	4.8	11.8	M3	M3

TECHNICAL CHARACTERISTICS

MATERIAL
 INSULATOR: PBT
 FLAMABILITY RATING: UL94-V0
 COLOR: BLUE
 CONTACT MATERIAL: COPPER ALLOY
 CONTACT TYPE: STAMPED
 CONTACT PLATING: SELECTIVE GOLD
 SHIELDING: STEEL TIN PLATED
 QUALITY CLASS: 3 AS PER CECC 75 301-802

ENVIRONMENTAL
 OPERATING TEMPERATURE: -40 UP TO 85°C
 COMPLIANCE: LEAD FREE AND ROHS

ELECTRICAL
 CURRENT RATING: 3A
 WORKING VOLTAGE: 250V AC
 INSULATOR RESISTANCE: >3000 MOHM
 DIELECTRIC WITHSTANDING VOLTAGE: 1000V AC/MN
 CONTACT RESISTANCE: 30 MOHM MAX

STANDARD
 CERTIFIED: E323964 / MODEL NUMBER 618-22M

PACKAGING
 TRAY + BAG*
 *Strain relief is always delivered in a separate bag for optional use

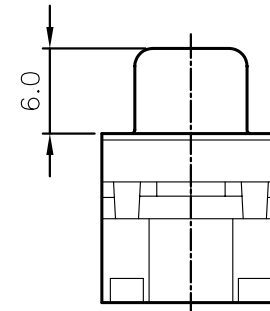
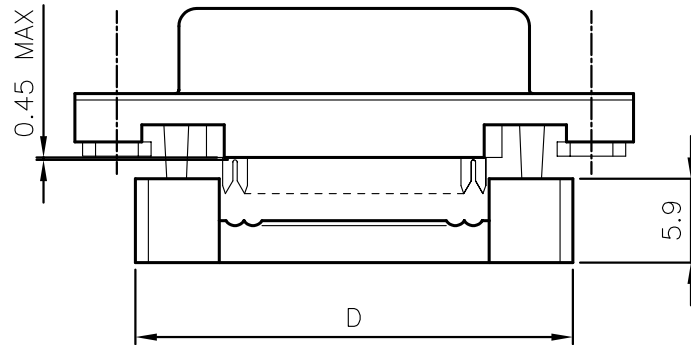
DIMENSION

PINS	A	B	C	D
9	16.30	25.00	30.80	22.40
15	25.60	33.30	39.20	30.80
25	38.30	47.10	53.10	44.50
37	55.80	63.50	69.40	61.40

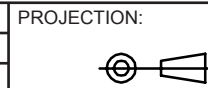
NOTE

Pre-crim position (can slightly vary because of not totally fixed part)
 After crimp position (can slightly vary depends on the tooling used)

4#40 Thread or M3 Thread



RoHS Compliant			
G			
F	16-MAR-11	NEW DRAWING	GG
E	17-MAR-10	CRIMP POSITION	JP
D	07-DEC-09	WORKING VOLT.	JP
C	19-NOV-09	STANDARD	JP
B	28-JUL-09	UNC 4-40 NUT	JP
A	06-NOV-08	PDF	JP
REV	DATE	FILE	BY



APPROVAL: RJ

GENERAL TOLERANCE
 .X = +/- 0.2
 .XX = +/- 0.15



UNIT: MM
 SCALE:
 SHEET: 1/1
 DRAW: JOE

DESCRIPTION: MALE IDC WITH UNC 4-40 NUT D-SUB
 WERI PART NO: 618 0xx 226 221

SIZE
A4