

Actual information about approvals can be found on
<http://www.schurter.com/approvals>



illuminated version

C20



70° C

Description

- Panel mount:
Screw-on version from front or rear side, snap-in version from front side
- 2 Functions:
Connector Protection class I, Line switch 2-pole
- Quick connect terminals 6.3 x 0.8 mm
- Alternative: version with line filter [EC12](#)

Characteristics

- All single elements are already wired
Unwired versions available on request
- Line switch non-illuminated or illuminated
- Ideal for application with high transient loads
- Qualified for use in equipment according IEC/EN 60950

Other versions on request:

- unwired versions
- line switch with other rocker marking
- for protection class II

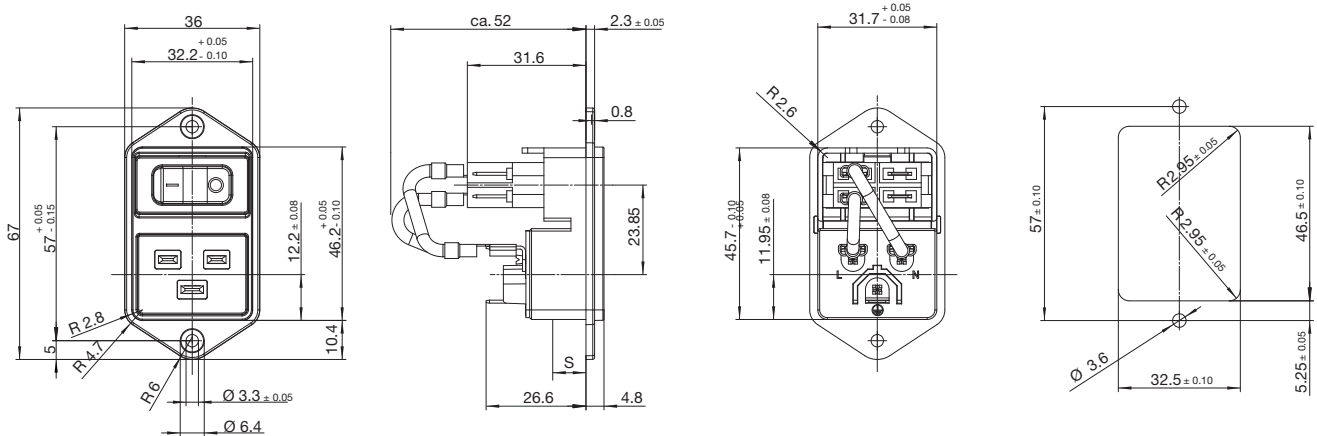
Technical data

Ratings IEC	16 A / 250 VAC; 50 Hz
Ratings UL/CSA	20 A / 250 VAC; 60 Hz
Dielectric strength	> 2.5 kVAC between L-N > 3 kVAC between L/N-PE (1 min/50 Hz)
Allowable operation temp.	-25 °C to 70 °C
Degree of protection	from front side IP40 acc. to IEC 60529
Protection class	Suitable for appliances with protection class I acc. to IEC 61140
Terminals	Quick connect terminals 6.3 x 0.8 mm
Panel thickness s	Screw-on: max 8 mm Mounting screw torque max 0.5 Nm Snap-in: 1.5/2/2.5 mm
Materials: Housing	Thermoplastic, black, UL 94V-0

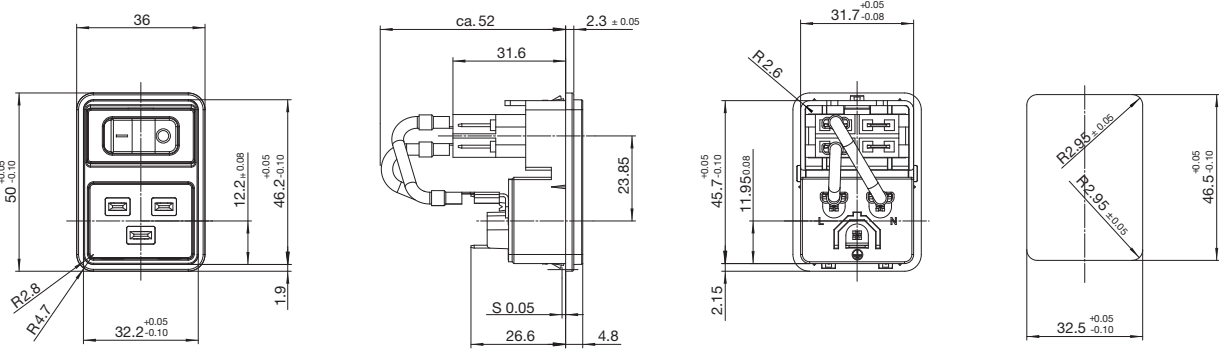
Appliance-inlet /-outlet	C20 acc. to IEC/EN 60320-1, UL 498, CSA C22.2 no. 42 (for cold condition) pin-temperature 70 °C, 16 A, Protection class I
Line switch	Rocker switch 2-pole, non-illuminated or illuminated red or green, acc. to IEC 61058-1 Technical details GENERAL PRODUCT INFORMATION

Dimensions

Screw-on mounting



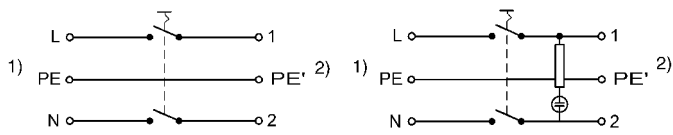
Snap-in mounting



Diagrams

Line switch non-illuminated

Line switch illuminated



1) Line
2) Load

1) Line
2) Load

Variants

with internal connections

Order Number	Panel mounting	Panel thickness s [mm]	Illumination	Color	Internal wired
EC11.0001.201	Snap-in	1.5			●
EC11.0001.202	Snap-in	1.5			
EC11.0021.201	Snap-in	1.5	●	red	●
EC11.0021.202	Snap-in	1.5	●	red	
EC11.0031.201	Snap-in	1.5	●	green	●
EC11.0031.202	Snap-in	1.5	●	green	
EC11.0001.301	Snap-in	2			●
EC11.0001.302	Snap-in	2			
EC11.0021.301	Snap-in	2	●	red	●
EC11.0021.302	Snap-in	2	●	red	
EC11.0031.301	Snap-in	2	●	green	●
EC11.0031.302	Snap-in	2	●	green	
EC11.0001.401	Snap-in	2.5			●
EC11.0001.402	Snap-in	2.5			
EC11.0021.401	Snap-in	2.5	●	red	●
EC11.0021.402	Snap-in	2.5	●	red	
EC11.0031.401	Snap-in	2.5	●	green	●
EC11.0031.402	Snap-in	2.5	●	green	
EC11.0001.002	Screw-on				
EC11.0021.001	Screw-on		●	red	●
EC11.0021.002	Screw-on		●	red	
EC11.0031.001	Screw-on		●	green	●
EC11.0031.002	Screw-on		●	green	

Packaging unit

25 Pcs

Accessories

ACCESSORIES