

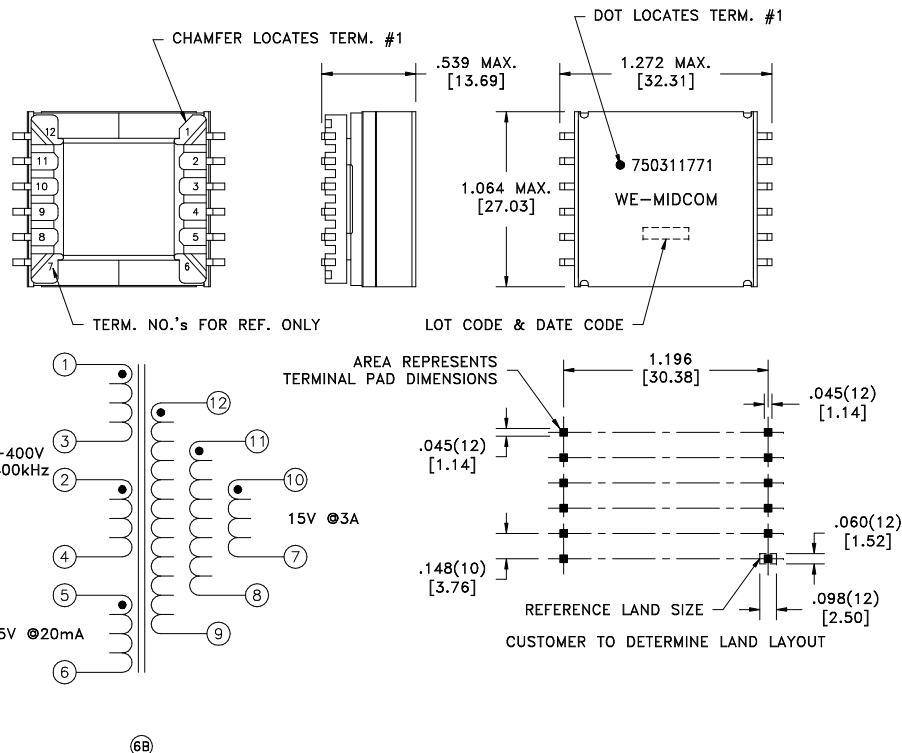
CUSTOMER TERMINAL	RoHS	LEAD(Pb)-FREE
Sn96%, Ag4%	Yes	Yes

more than you expect



ELECTRICAL SPECIFICATIONS @ 25°C unless otherwise noted:

PARAMETER	TEST CONDITIONS	VALUE
D.C. RESISTANCE	1-4 tie(2+3), @20°C	0.45 ohms ±10%
D.C. RESISTANCE	5-6 @20°C	0.185 ohms max.
D.C. RESISTANCE	7-10 @20°C	0.050 ohms max.
D.C. RESISTANCE	8-11 @20°C	0.050 ohms max.
D.C. RESISTANCE	9-12 @20°C	0.050 ohms max.
INDUCTANCE	1-4 tie(2+3), 10kHz, 100mVAC, Ls	500uH ±10%
INDUCTANCE	5-6 10kHz, 100mVAC, Ls	14.0uH ±10%
INDUCTANCE	12-9 tie(7+8+9, 10+11+12), 10kHz, 100mVAC, Ls	14.0uH ±10%
INDUCTANCE	1-4 tie(2+3), 10kHz, 100mVAC, 2ADC, Ls	400uH min.
SATURATION CURRENT	20% rolloff from initial	2.50A
LEAKAGE INDUCTANCE	1-4 tie(2+3, 5+6, 7+8+9+10+11+12), 100kHz, 100mVAC, Ls	5.0uH typ., 10.0uH max.
DIELECTRIC	1-12 tie(2+3, 4+5, 7+8+9), 2500VAC, 1 second	2000VAC, 1 minute
URNS RATIO	(1-4):(12-9), tie(2+3)	6:1, ±1%
URNS RATIO	(1-4):(11-8), tie(2+3)	6:1, ±1%
URNS RATIO	(1-4):(10-7), tie(2+3)	6:1, ±1%
URNS RATIO	(1-4):(5-6), tie(2+3)	6:1, ±1%
URNS RATIO	(1-3):(2-4)	1:1, ±1%



GENERAL SPECIFICATIONS:

OPERATING TEMPERATURE RANGE: -40°C to +125°C including temp rise.

Wire insulation & RoHS status not affected by wire color.  
Wire insulation color may vary depending on availability.

REV.	DATE	Packaging Specifications Method: <b>Tape &amp; Reel</b> PKG-0605 www.we-online.com/midcom		Tolerances unless otherwise specified: Angles: ±1°      Decimals: ±.005 [.13] Fractions: ±1/64      Footprint: ±.005 [.13]	DRAWING TITLE <b>TRANSFORMER</b>	PART NO. <b>750311771</b>
6B	3/11		CONVENTION PLACEMENT	This drawing is dual dimensioned. Dimensions in brackets are in millimeters.	eiSos p/n: 750311771	SPECIFICATION SHEET 1 OF 1
6A	11/10	SEE REVISION SHEET FOR REVISION LEVEL	REVISION LEVEL			

