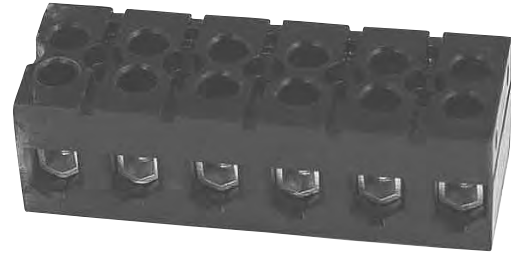


Heavy Duty Terminal Blocks

985 GP Series - Deadfront Type

600 Volts AC/DC (UL/CSA)



985 GP 06

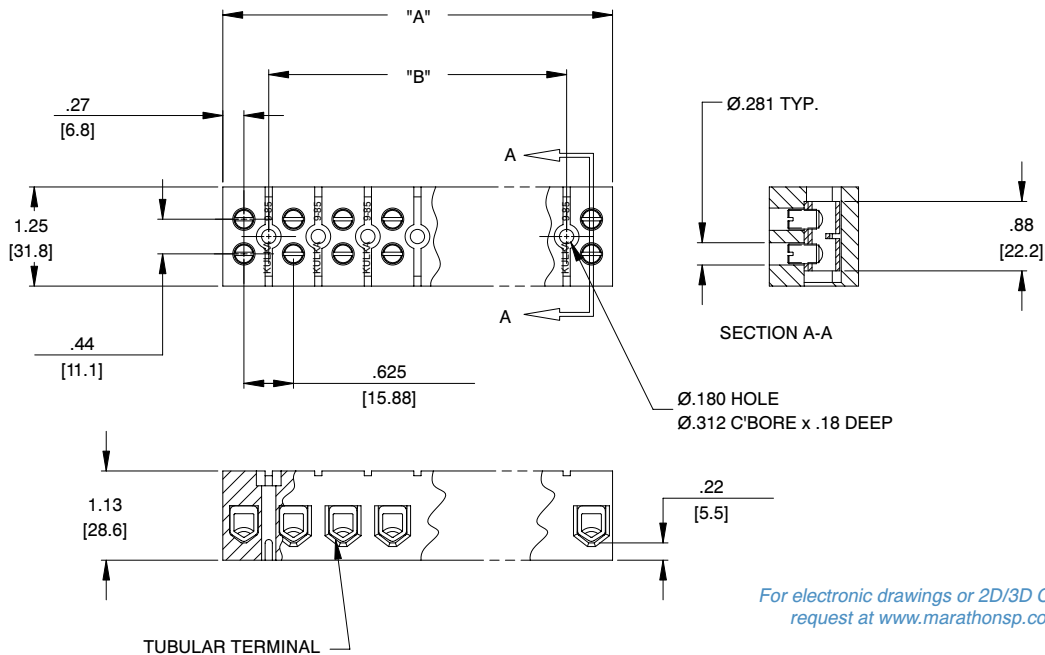
Specifications:

- Base, General Purpose Phenolic, 150°C (UL RTI)
- Connector, Aluminum, Tin (Sn) Plated
- Screws, Steel, Tin (Sn) Plated
- Current Rating up to **85 Amps**
- Wire Range #4-#18 AWG Copper Wire
- Multiple Wire Combinations For Solid or Stranded Copper Wire Are:
 - (1) #4 AWG
 - (1) #6 AWG
 - (1 - 2) #8 AWG
 - (1 - 4) #10 AWG
 - (1 - 4) #12 AWG
 - (1 - 6) #14 AWG
 - (1 - 6) #16 AWG
 - (1 - 8) #18 AWG
- 5/8" (.625") Center-Line Spacing
- UL Recognized File No. XCFR2.E47811
- CSA Certified File No. LR19766
- **CE** - 630 Volts
- RoHS Compliant

Catalog #	# of poles	Dimensions	
		A	B
985 GP 02	2	1.16	N/A
985 GP 03	3	1.78	0.63
985 GP 04	4	2.41	1.25
985 GP 05	5	3.03	1.88
985 GP 06	6	3.66	2.50
985 GP 07	7	4.28	3.13
985 GP 08	8	4.91	3.75
985 GP 09	9	5.53	4.38
985 GP 10	10	6.16	5.00
985 GP 11	11	6.78	5.63
985 GP 12	12	7.41	6.25

See page 35 for DIN Rail Adapter

mm = dim X 25.4



For electronic drawings or 2D/3D CAD data, submit request at www.marathonsp.com/drawings.html