

## IEC Appliance Inlet C14 with Filter, Circuit Breaker TA45

Standard- or Medical-Filter



V-Lock

C14  
  
 70° C

**Description**

- Panel Mount:  
Screw-on mounting from front side
- 3 Functions:  
Appliance Inlet Protection class I, circuit breaker type TA45 2-pole, Line filter in standard and medical version
- Quick connect terminals 6.3 x 0.8 mm

**Approvals**

- VDE Certificate Number: 117118
- UL File Number: E72928

**Characteristics**

- All single elements are already wired  
Unwired versions available on request
- Line switch non-illuminated or illuminated  
Thermal overload protection  
Optional with undervoltage- or remote trip release
- Qualified for use in equipment according IEC/EN 60950

**References**

Alternative: version without line filter [6145](#)  
 We recommend for new applications the new type [DF12](#)

**Weblinks**

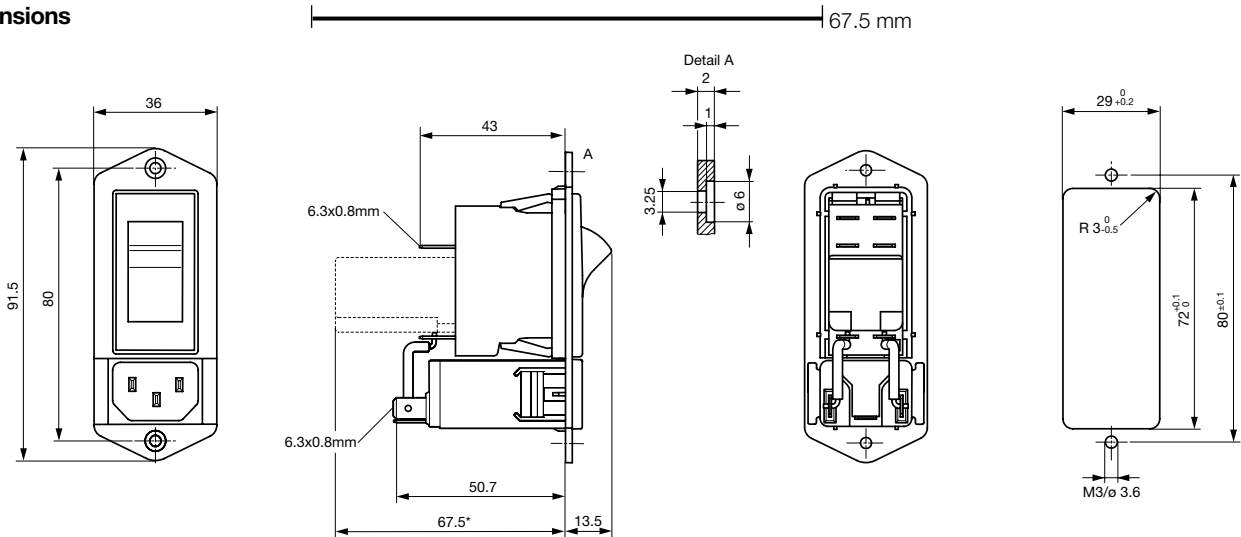
[pdf](#), [General Product Information](#), [Approvals](#), [RoHS](#), [CHINA-RoHS](#), [Mating Connectors](#), [e-Store](#), [SCHURTER-Stock-Check](#), [Distributor-Stock-Check](#), [Accessories](#)

Newly available variants corresponding to V-Lock mating cordset. The connector is equipped with a notch intended for use with the latching cordset. The cord latching system prevents against accidental removal of the cordset.

**Technical Data**

Ratings IEC	1 - 10A @ Ta 40 °C / 250VAC; 50Hz	Appliance-Inlet/-Outlet	C14 acc. to IEC/EN 60320-1, UL 498, CSA C22.2 no. 42 (for cold conditions) pin-temperature 70 °C, 10A, Protection Class 1
Ratings UL/CSA	1 - 15A @ Ta 40 °C / 125VAC; 60Hz	Circuit Breakers	Acc. IEC/EN 60934, UL 1077, CSA 22.2 no. 235 2-pole rocker switch, illuminated or non-illuminated. Optional with undervoltage- or remote trip release Short circuit capacity Icn: at In < 3A/240VAC : 10 x In at In ≥ 3A/240VAC : 300A
Leakage Current	standard < 0.5mA (250V / 60Hz) medical < 5 µA (250 V / 60 Hz)	Line Switch	Rocker switch 2-pole non-illuminated or illuminated acc. to IEC 61058-1 <a href="#">Technical details</a>
Dielectric Strength	> 1.7kVDC between L-N > 2.7kVDC between L/N-PE Test voltage (2 sec)	Line Filter	Standard and Medical Version, IEC 60939, IEC 60601-1, UL 1283, UL 544, EN 133 200, CSA C22.2 no. 8 <a href="#">Technical details</a>
Allowable Operation Temp.	-10 °C to 55 °C	MTBF	> 100'000h acc. to MIL-HB-217 F
Climatic Category	10/055/21 acc. to IEC 60068-1		
Degree of Protection	from front side IP 40 acc. to IEC 60529		
Protection Class	Suitable for appliances with protection class 1 acc. to IEC 61140		
Terminal	Quick connect terminals 6.3 x 0.8 mm		
Panel Thickness s	Screw: max 8 mm Mounting screw torque max 0.5Nm		
Material: Housing	Thermoplastic, black, UL 94V-0		

## Dimensions



\* --- Version TA45 with undervoltage release

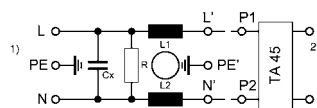
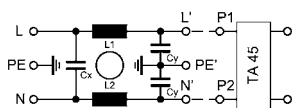
## Technical Data of Filter-Components

Rated Current [A]	Filter-Type	Inductances L [mH]	Capacitance CX [nF]	Capacitance CY [nF]	R [MΩ]
1	Standard Version	2 x 11	47	2.2	-
2	Standard Version	2 x 4	47	2.2	-
3	Standard Version	2 x 2.5	47	2.2	-
4	Standard Version	2 x 1.6	47	2.2	-
6	Standard Version	2 x 0.7	47	2.2	-
8	Standard Version	2 x 0.6	47	2.2	-
10	Standard Version	2 x 0.4	47	2.2	-
15	Standard Version	2 x 0.1	47	2.2	-
1	Medical Version (M5)	2 x 11	47	-	1
2	Medical Version (M5)	2 x 4	47	-	1
6	Medical Version (M5)	2 x 0.7	47	-	1
8	Medical Version (M5)	2 x 0.6	47	-	1
10	Medical Version (M5)	2 x 0.4	47	-	1
15	Medical Version (M5)	2 x 0.1	47	-	1

## Diagrams

Standard version

Medical version



1) Line  
2) Load

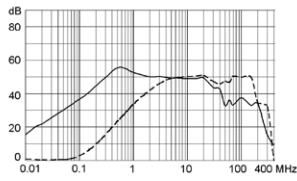
1) Line  
2) Load

**Attenuation Loss**

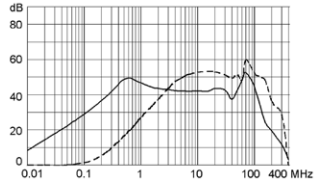
Standard version

--- differential mode    — common mode

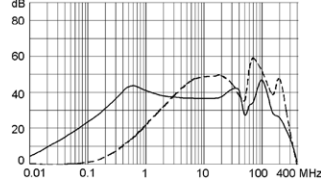
1 A



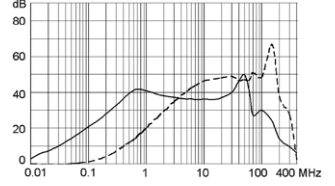
2 A



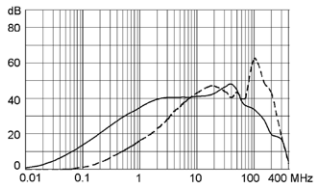
3 A



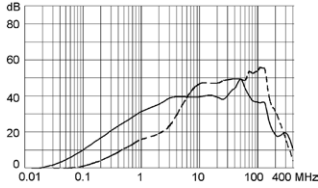
4 A



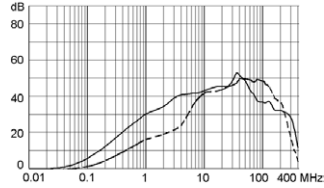
6 A



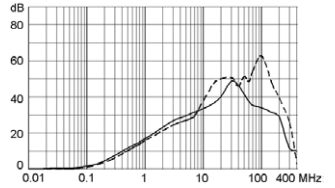
8 A



10 A

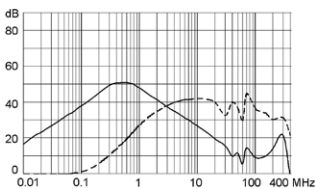


15 A

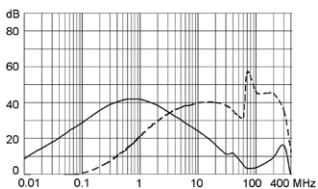


Medical version (M5)

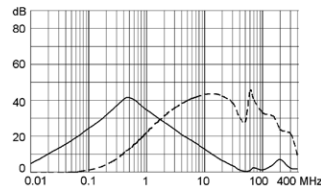
1 A



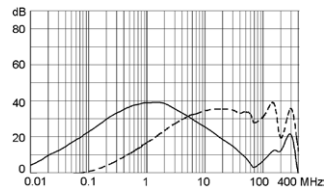
2 A



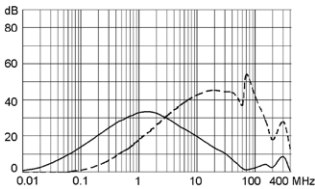
3 A



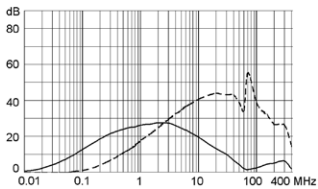
4 A



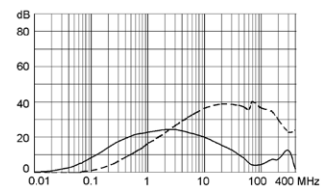
6 A



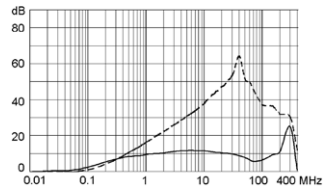
8 A



10 A



15 A



**Table 1 Selection for type TA45**

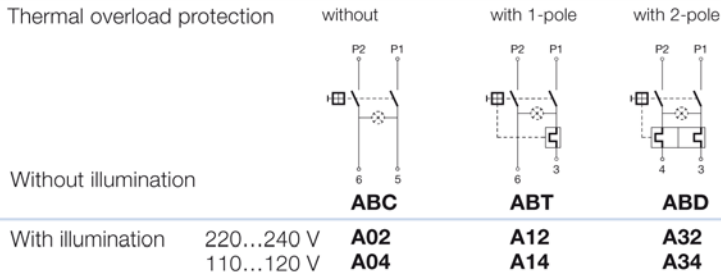
Order example



- Line switch
  - 2-pole, rocker actuated
  - Quick connect terminal
- Other types on request

**ABT** **W** **F** **150** **C0**

**Diagram**



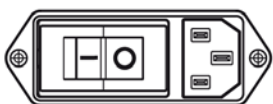
**Colours**

Switch front	Rocker	
<b>W</b> black	white	—
<b>B</b> black	black	—
<b>6</b> black	—	orange transp.

**Rocker legend**

Surface	Illustration	Colour of print	Surface	Illustration	Colour of print
<b>F</b> embossed / Relief		—	<b>M</b> printed		black
<b>H</b> printed / bedruckt		white / weiss	<b>P</b> printed		white
<b>K</b> printed / bedruckt		black / schwarz	<b>R</b> printed		black
<b>L</b> printed / bedruckt		white / weiss			

Position of the rocker legend e.g F



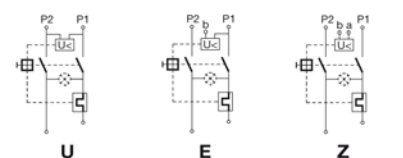
**Rated current:**

- Without thermal overload protection: code C00 }  $I_n = 20\text{ A}$
- With thermal overload protection: rated current  $I_n$  (A)

$I_n$	Code	$I_n$	Code	$I_n$	Code	$I_n$	Code
0,1	<b>J01</b>	1,3	<b>J13</b>	2,8	<b>J28</b>	10,0	<b>100</b>
0,2	<b>J02</b>	1,4	<b>J14</b>	3,0	<b>030</b>	11,0	<b>110</b>
0,3	<b>J03</b>	1,5	<b>J15</b>	3,5	<b>035</b>	12,0	<b>120</b>
0,4	<b>J04</b>	1,6	<b>J16</b>	4,0	<b>040</b>	13,0	<b>130</b>
0,5	<b>J05</b>	1,7	<b>J17</b>	4,5	<b>045</b>	14,0	<b>140</b>
0,6	<b>J06</b>	1,8	<b>J18</b>	5,0	<b>050</b>	15,0	<b>150</b>
0,7	<b>J07</b>	1,9	<b>J19</b>	6,0	<b>060</b>		
0,8	<b>J08</b>	2,0	<b>J20</b>	6,5	<b>065</b>		
0,9	<b>J09</b>	2,1	<b>J21</b>	7,0	<b>070</b>		
1,0	<b>J10</b>	2,2	<b>J22</b>	7,5	<b>075</b>		
1,1	<b>J11</b>	2,3	<b>J23</b>	8,0	<b>080</b>		
1,2	<b>J12</b>	2,5	<b>J25</b>	9,0	<b>090</b>		

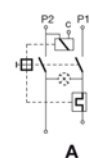
**Without release: code C0**

**Undervoltage release**



•	•	•
•	•	•
•	•	•

**Remote trip release**

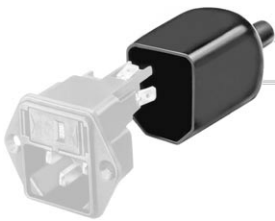


Code	Rated voltage $U_n$
•	<b>2</b> 240 V AC
•	<b>3</b> 230 V AC
•	<b>4</b> 120 V AC

**Packaging unit** 20 Pcs

**Accessories**

**Description**



Assorted Covers  
Rear Cover

0859.0074

**Mating Outlets/Connectors**

**Category / Description**

[Appliance Outlet Overview complete](#)



IEC Appliance Outlet F, Screw-on Mounting, Front Side, Solder Terminal	4787
IEC Appliance Outlet F, Snap-in Mounting, Front Side, Solder or Quick-connect Terminal	4788
IEC Appliance Outlet F or H, Screw-on Mounting, Front Side, Solder, PCB or Quick-connect Terminal	5091
IEC Appliance Outlet F or H, Screw-on Mounting, Front Side, Solder or Quick-connect Terminal	5092

[Appliance Outlet further types to 5145](#)

[Connector Overview complete](#)



IEC Connector C15, Rewireable, Straight	0101
IEC Connector C15A, Rewireable, Straight	0102
IEC Connector C15A, Rewireable, Straight	0102-G
IEC Connector C15A, Rewireable, Angled	0112
IEC Connector C13, Rewireable, Angled	4012

[Connector further types to 5145](#)

[Power Cord Overview complete](#)



Power Cord with IEC Connector C13, Angled	0311
Power Cord with IEC Connector C13, Angled	3011
Power Cord with IEC Connector C13, Angled	3012
Power Cord with IEC Connector C13, Angled	3013
Power Cord with IEC Connector C13	3020

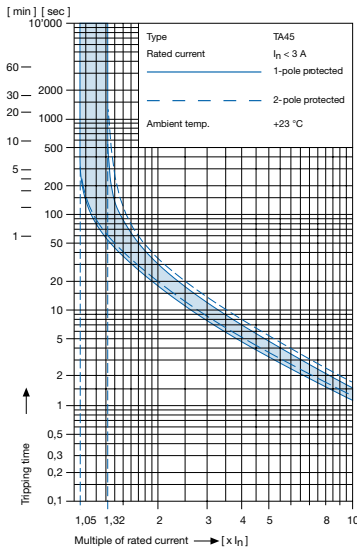
[Power Cord further types to 5145](#)

**Technical data (continued)**

**Circuit breaker**

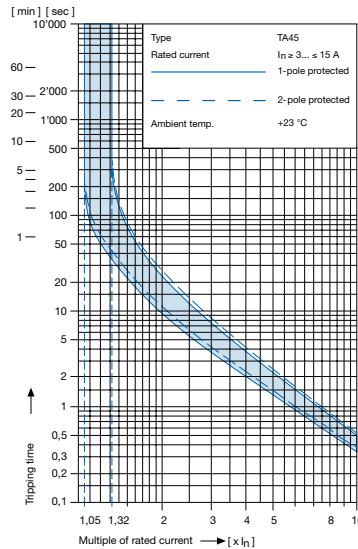
Tripping characteristics

$I_n < 3 A$



Tripping characteristics

$I_n \geq 3 \dots \leq 15 A$



**Effect of ambient temperature <sup>1)</sup>**

The unit is calibrated for an ambient temperature of +23 °C. To determine the rated current for a lower or higher ambient temperature, use a correction factor from the table below.

**\* Ambient temperature [°C] Correction factor**

-10	0,89
- 5	0,91
0	0,92
+23	1,00
+30	1,03
+40	1,08
+55	1,16

\* Temperature must be measured at the rear of the breaker next to the terminals after equipment operating temperature has been reached.

**<sup>1)</sup> Example**

Rated current at +23 °C	6,0 A
Ambient temperature	+40 °C
Correction factor	1,08
Chosen rated current at + 40 °C ambient temperature	<b>6 A x 1,08 = 6,5 A</b>

**Order code (Order example)**

<b>Type</b>	<b>Order code TA45</b> (2-pole rocker-switch without accessories)		<b>Wiring</b> <b>0</b> Without <b>1</b> With																			
<b>5145.</b>	<table border="0"> <tr> <td><b>A</b></td> <td><b>B</b></td> <td><b>T</b></td> <td><b>W</b></td> <td><b>F</b></td> <td><b>1</b></td> <td><b>5</b></td> <td><b>0</b></td> <td><b>C</b></td> <td><b>0</b></td> </tr> <tr> <td colspan="10" style="text-align: center;">see table 1</td> </tr> </table>		<b>A</b>	<b>B</b>	<b>T</b>	<b>W</b>	<b>F</b>	<b>1</b>	<b>5</b>	<b>0</b>	<b>C</b>	<b>0</b>	see table 1									
<b>A</b>	<b>B</b>	<b>T</b>	<b>W</b>	<b>F</b>	<b>1</b>	<b>5</b>	<b>0</b>	<b>C</b>	<b>0</b>													
see table 1																						
			<b>Rated current of line filter</b>																			
			<table border="0"> <tr> <td><b>1</b></td> <td>1 (A)</td> <td><b>5</b></td> <td>6 (A)</td> </tr> <tr> <td><b>2</b></td> <td>2 (A)</td> <td><b>6</b></td> <td>8 (A)</td> </tr> <tr> <td><b>3</b></td> <td>3 (A)</td> <td><b>7</b></td> <td>10 (A)</td> </tr> <tr> <td><b>4</b></td> <td>4 (A)</td> <td><b>8</b></td> <td>15 (A)</td> </tr> </table>	<b>1</b>	1 (A)	<b>5</b>	6 (A)	<b>2</b>	2 (A)	<b>6</b>	8 (A)	<b>3</b>	3 (A)	<b>7</b>	10 (A)	<b>4</b>	4 (A)	<b>8</b>	15 (A)			
<b>1</b>	1 (A)	<b>5</b>	6 (A)																			
<b>2</b>	2 (A)	<b>6</b>	8 (A)																			
<b>3</b>	3 (A)	<b>7</b>	10 (A)																			
<b>4</b>	4 (A)	<b>8</b>	15 (A)																			

Please note that Schurter will establish an internal part number for logistical use in addition to the order code. The format of this internal part number is, for example 5145.0031.001