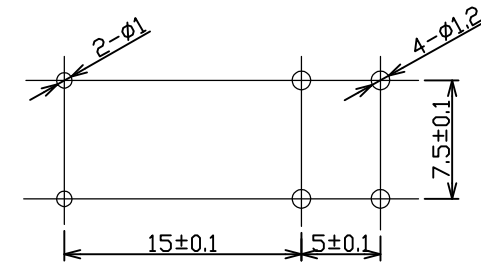
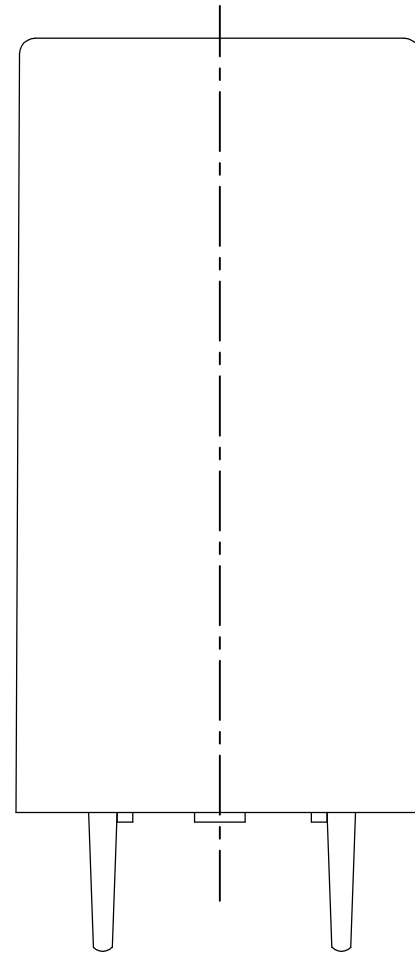
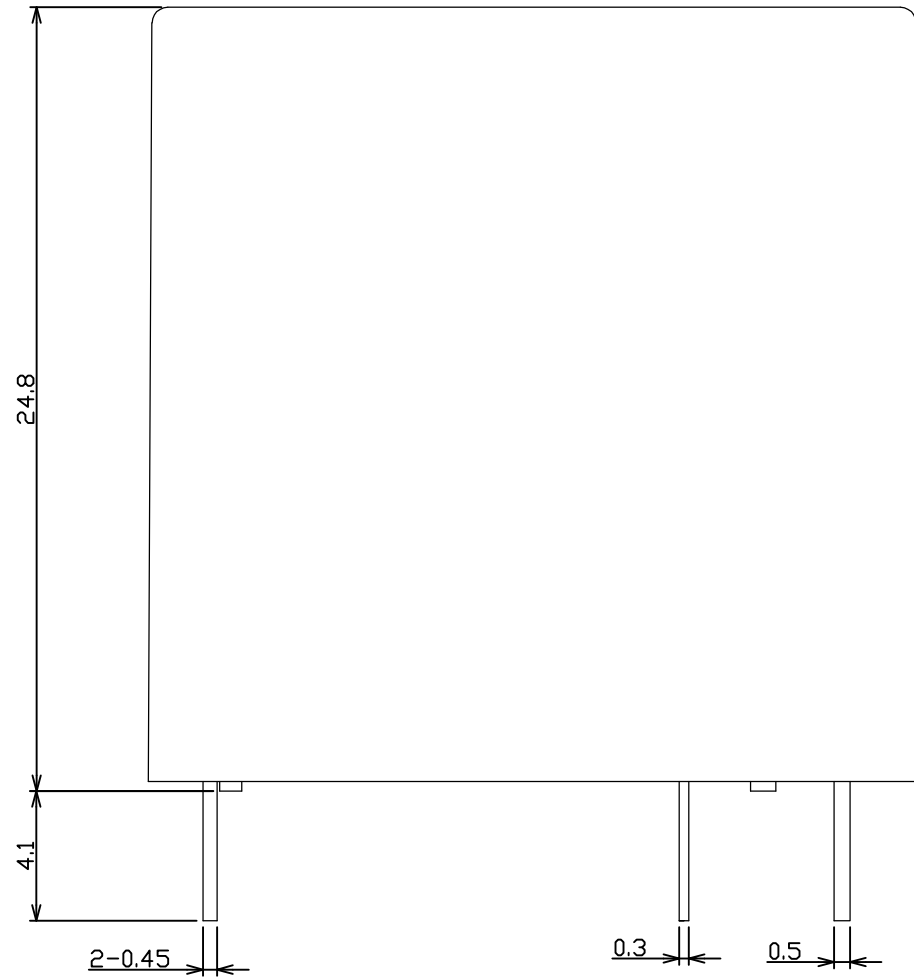
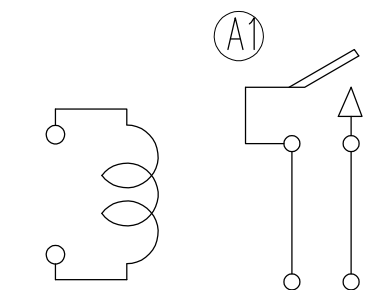


P	LTR	DESCRIPTION	DATE	DWN	APVD
	A2	REVISED PER ECO-11-005140	29MAR11	RK	HMR

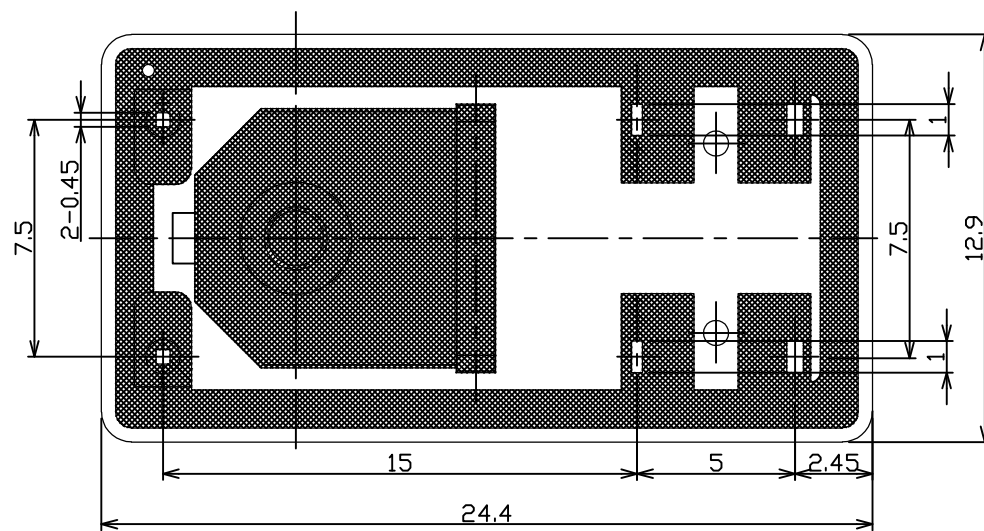
C VIEW



DRILLING DIAGRAM(2\1)  
(BOTTOM VIEW)

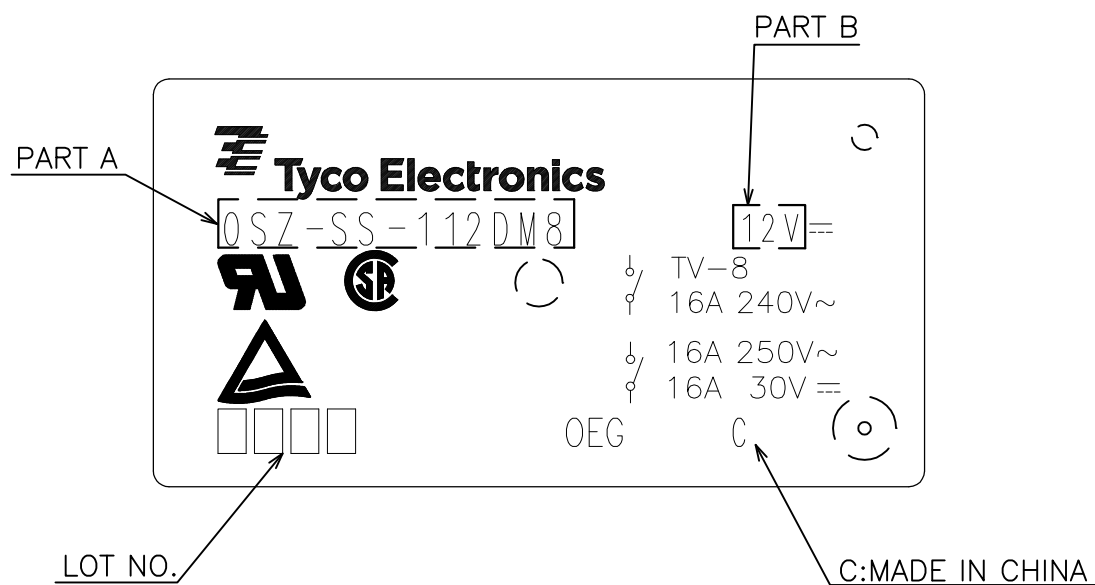


CONNECTION DIAGRAM



DIMENSIONS: mm 		DWN MH.LIN		TE Connectivity	
		CHK BH.YU			
TOLERANCES UNLESS OTHERWISE SPECIFIED: 0 PLC ± 1 PLC ± 2 PLC ± 3 PLC ± 4 PLC ± ANGLES ±		APVD SUNNY,ZHANG		NAME	
		PRODUCT SPEC -		OSZ TYPE CUSTOMER DRAWING	
MATERIAL -		FINISH -		SIZE A3	RESTRICTED TO
		WEIGHT -		CAGE CODE 00779	DRAWING NO C- 7-1419124-4
CUSTOMER DRAWING				SCALE 4:1	SHEET 1 OF 2
				REV A2	

P	LTR	DESCRIPTION	ECN	DATE	DWN	APVD

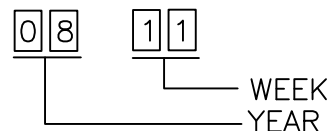


OSZ-SS-148DM8	7-1419124-7	48V	OSZ-SS-148DM8	g
OSZ-SS-124DM8	7-1419124-5	24V	OSZ-SS-124DM8	f
OSZ-SS-115DM8	3-1419145-7	15V	OSZ-SS-115DM8	e
OSZ-SS-112DM8	7-1419124-4	12V	OSZ-SS-112DM8	d
OSZ-SS-109DM8	1461389-3	9V	OSZ-SS-109DM8	c
OSZ-SS-106DM8	1461389-2	6V	OSZ-SS-106DM8	b
OSZ-SS-105DM8	7-1419124-3	5V	OSZ-SS-105DM8	a
TYPE NAME	PART NAME	PART B	PART A	No.

RELAY TYPE

		EPOXY RESIN	RESIN	15
UL94 V-0		PBT	CASE	14
CLASS E		UEW	MAGNETIC WIRE	13
		PET	BASE	12
UL94 V-0		PBT	BOBBIN	11
		CP WIRE	COIL TERMINAL	10
UL94 V-0		PPS	CARD	9
		Ag ALLOY	MOVABLE CONTACT	8
		Ag ALLOY	STATIONARY CONTACT	7
		Cu ALLOY	HINGE SPRING	6
		Cu ALLOY	STATIONARY TERMINAL	5
		Cu ALLOY	MOVABLE SPRING	4
	Cu-Ni PLATED	STEEL	CORE	3
	Cu-Ni PLATED	STEEL	ARMATURE	2
	Ni PLATED	STEEL	YOKE	1
INCOMBUSTIBILITY	TREATMENT	MATERIAL	DESCRIPTION	ITEM

NOTES:  
1.LOT NO. SYSTEM AS FOLLOWING:



2.THE DIMENSION TOLERANCE AS FOLLOWING:

Diagram dimension	Tolerance
0.99mm max.	±0.1mm
1 - 2.99mm	±0.2mm
3mm min.	±0.3mm

3.TERMINAL DIMENSION DOES NOT INCLUDE SOLDER TIP

DIMENSIONS: mm	TOLERANCES UNLESS OTHERWISE SPECIFIED: 0 PLC ± 1 PLC ± 2 PLC ± 3 PLC ± 4 PLC ± ANGLES ±	DWN		
		CHK		
	MATERIAL	APVD		NAME
		PRODUCT SPEC		OSZ TYPE CUSTOMER DRAWING
FINISH	WEIGHT	APPLICATION SPEC		SIZE
		CUSTOMER DRAWING	A3	
		CAGE CODE	DRAWING NO	
		00779	C- 7-1419124-4	
		RESTRICTED TO		
		SCALE	SHEET	
		4:1	2 OF 2	
		REV	A2	