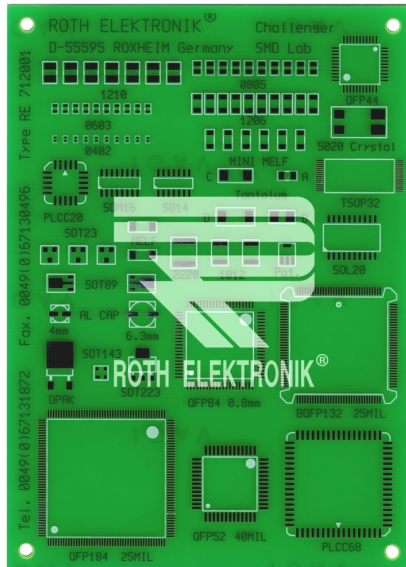


**PCB for Soldering Practice for SMD Standard, Fine Pitch and Discrete Components**



**RE712001-LF**



- PCB for solder practices for SMD standard, fine pitch, and discrete components, also very well suitable for pick-and-place
- EPOXY resin FR4 1.50 mm single-sided 35 µm CU
- solder side hotair leveling coated (HAL-leadfree), solder stop mask and additional print.
- size 100 x 140 mm

- 85 different SMD components:

PLCC:	52, 68, 20				
QFP:	44, 84, 132, 184 sq.				
SOT 23:	3 x	Tantal	Chip	Kond.	A: 1
SOT 89:	2 x	"	"	"	B: 1
SOT 143:	1 x	"	"	"	C: 1
SOT 233:	1 x	"	"	"	D: 1
SO 14:	1 x				
SOM 16:	1 x	0402	Chip	Kond.	: 10
SOL 20:	1 x	0603	"	"	: 10
Poti:	1 x	1206	"	"	: 10
DPAK:	1 x	0805	"	"	: 10
Al. Kond. 6,3 mm:	1 x	1210			: 7
Al. Kond. 4,0 mm:	1 x	2220			: 1
		1812			: 2
Melf 2308:	2 x				
Mini Melf 1206:	6 x	TSOP32			: 1
		5020 crystal			1