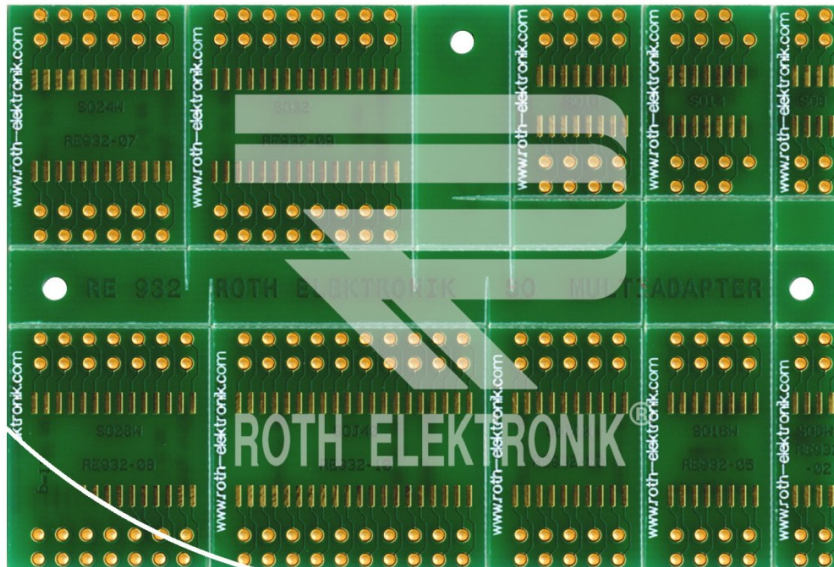


SO/SOJ-SMD Multiadapter (small outline)



RE932



- EPOXY fibre-glass FR4 1.50 mm double-sided 35 µm CU (pth)
- solder and component side with chem. NI/AU surface and solder stop mask
- hole dia 1.00 mm
- adapter for 10 different SOs
- pitch 1.27 mm
- pre-scratched rated break points for the separation of individual modules from the board
- size 58.50 x 88.00 mm

| Modul-No | Pitch | mil | Pin/Quantity | Size (mm) |
|----------|---------|------|--------------|-----------------|
| RE932-01 | 1.27 mm | 0.50 | 8 | 3.9 (153 mil) |
| RE932-02 | 1.27 mm | 0.50 | 8-w | 7.5 (295 mil) |
| RE932-03 | 1.27 mm | 0.50 | 14 | 3.9 (153 mil) |
| RE932-04 | 1.27 mm | 0.50 | 16 | 3.9 (153 mil) |
| RE932-05 | 1.27 mm | 0.50 | 16-w | 7.5 (295 mil) |
| RE932-06 | 1.27 mm | 0.50 | 20-w | 7.5 (295 mil) |
| RE932-07 | 1.27 mm | 0.50 | 24-w | 7.5 (295 mil) |
| RE932-08 | 1.27 mm | 0.50 | 28-w | 7.5 (295 mil) |
| RE932-09 | 1.27 mm | 0.50 | 32 | 7.5 (295 mil) |
| RE932-10 | 1.27 mm | 0.50 | 40 (SOJ) | 10.16 (400 mil) |