

## Tina Tina-MX6 series



**Ordering number** FA10646  
**Description** FA10646\_Tina-MX6-D

Family Tina  
 Type Lens  
 LED MX-6  
 Color White  
 Diameter 16 mm  
 Height 10 mm  
 Style Round  
 Optic Material PMMA  
 Holder Material PC  
 Fastening -  
 Status Ready

FWHM 23 degrees  
 Efficiency 93  
 cd/lm -  
 Gerber File Available



**Ordering number** FA10647  
**Description** FA10647\_Tina-MX6-M

Family Tina  
 Type Lens  
 LED MX-6  
 Color White  
 Diameter 16 mm  
 Height 10 mm  
 Style Round  
 Optic Material PMMA  
 Holder Material PC  
 Fastening Tape, glue  
 Status Ready

FWHM 34 degrees  
 Efficiency 90  
 cd/lm -  
 Gerber File Available



**Ordering number** FA10839  
**Description** FA10839\_Tina-MX6-W

Family Tina  
 Type Lens  
 LED MX-6  
 Color White  
 Diameter 16 mm  
 Height 10 mm  
 Style Round  
 Optic Material PMMA  
 Holder Material PC  
 Fastening -  
 Status Ready

FWHM 44 degrees  
 Efficiency 92  
 cd/lm -  
 Gerber File Available



**Ordering number** FA10888  
**Description** FA10888-Tina-MX6-RS

Family Tina  
 Type Lens  
 LED MX-6  
 Color White  
 Diameter 16 mm  
 Height 10 mm  
 Style Round  
 Optic Material PMMA  
 Holder Material PC  
 Fastening -  
 Status Ready

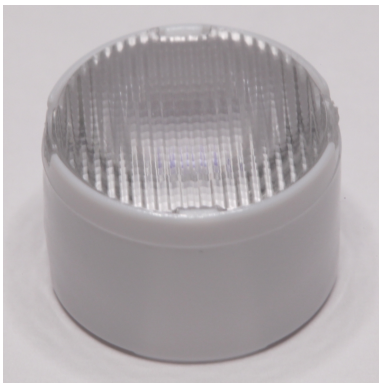
FWHM 22 degrees  
 Efficiency 96  
 cd/lm -  
 Gerber File Available

## Tina Tina-MX6 series



**Ordering number** FA10901  
**Description** FA10901-Tina-MX6-WW

Family	Tina	FWHM	60 degrees
Type	Lens	Efficiency	92
LED	MX-6	cd/lm	-
Color	White	Gerber File	Available
Diameter	16 mm		
Height	10 mm		
Style	Round		
Optic Material	PMMA		
Holder Material	PC		
Fastening	-		
Status	Ready		



**Ordering number** FA11201  
**Description** FA11201-Tina-MX6-O

Family	Tina	FWHM	32+24 degrees
Type	Lens	Efficiency	-
LED	MX-6	cd/lm	-
Color	White	Gerber File	Available
Diameter	16 mm		
Height	10 mm		
Style	Round		
Optic Material	PMMA		
Holder Material	PC		
Fastening	-		
Status	Ready		