

Lisa2 Lisa2-Pin-RE series



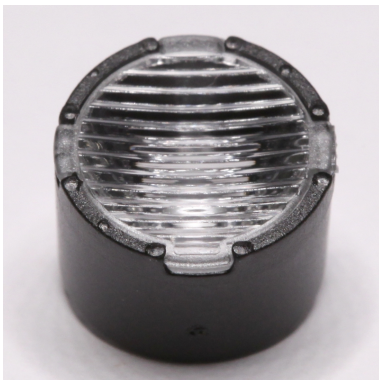
| | | | |
|------------------------|-------------------------------|-------------|------------|
| Ordering number | FA10992 | | |
| Description | FA10992_Lisa2-M-Pin-RE | | |
| Family | Lisa2 | FWHM | 25 degrees |
| Type | Assembly | Efficiency | 94 |
| LED | Luxeon-Rebel | cd/lm | - |
| Color | Black | Gerber File | Available |
| Diameter | 9.9 mm | | |
| Height | 7 mm | | |
| Style | Round | | |
| Optic Material | PMMA | | |
| Holder Material | - | | |
| Fastening | Tape, glue | | |
| Status | Ready | | |



| | | | |
|------------------------|-------------------------------|-------------|------------|
| Ordering number | FA10993 | | |
| Description | FA10993_Lisa2-W-Pin-RE | | |
| Family | Lisa2 | FWHM | 37 degrees |
| Type | Assembly | Efficiency | 93 |
| LED | Luxeon-Rebel | cd/lm | - |
| Color | Black | Gerber File | Available |
| Diameter | 9.9 mm | | |
| Height | 7 mm | | |
| Style | Round | | |
| Optic Material | PMMA | | |
| Holder Material | - | | |
| Fastening | Tape, glue | | |
| Status | Ready | | |



| | | | |
|------------------------|--------------------------------|-------------|-----------|
| Ordering number | FA10994 | | |
| Description | FA10994_Lisa2-WW-Pin-RE | | |
| Family | Lisa2 | FWHM | degrees |
| Type | Assembly | Efficiency | - |
| LED | Luxeon-Rebel | cd/lm | - |
| Color | Black | Gerber File | Available |
| Diameter | 9.9 mm | | |
| Height | 7 mm | | |
| Style | Round | | |
| Optic Material | PMMA | | |
| Holder Material | - | | |
| Fastening | Tape, glue | | |
| Status | Ready | | |



| | | | |
|------------------------|----------------------------------|-------------|---------------|
| Ordering number | FA11853 | | |
| Description | FA11853_Lisa2-O-90-Pin-RE | | |
| Family | Lisa2 | FWHM | 48+20 degrees |
| Type | Assembly | Efficiency | - |
| LED | Luxeon-Rebel | cd/lm | - |
| Color | Black | Gerber File | Available |
| Diameter | 9.9 mm | | |
| Height | 7 mm | | |
| Style | Round | | |
| Optic Material | PMMA | | |
| Holder Material | PC | | |
| Fastening | Tape, glue | | |
| Status | Ready | | |



Lisa2 Lisa2-Pin-RE series



| | | | |
|------------------------|---------------------------------|-------------|-----------|
| Ordering number | FA11951 | | |
| Description | FA11951_Lisa2-WWW-Pin-RE | | |
| Family | Lisa2 | FWHM | degrees |
| Type | Assembly | Efficiency | - |
| LED | Luxeon-Rebel | cd/lm | - |
| Color | Black | Gerber File | Available |
| Diameter | 9.9 mm | | |
| Height | 7 mm | | |
| Style | Round | | |
| Optic Material | PMMA | | |
| Holder Material | PC | | |
| Fastening | Tape, glue | | |
| Status | Ready | | |