

Part Number: T3518EG - 24VDC 0.5Amp Wall-Mounting SMPSU

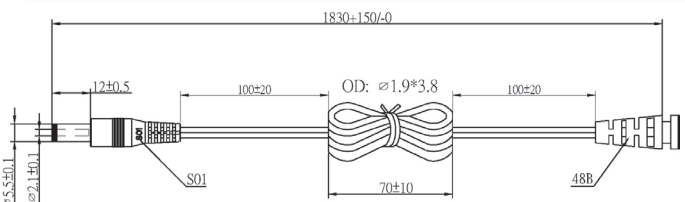
Product Image



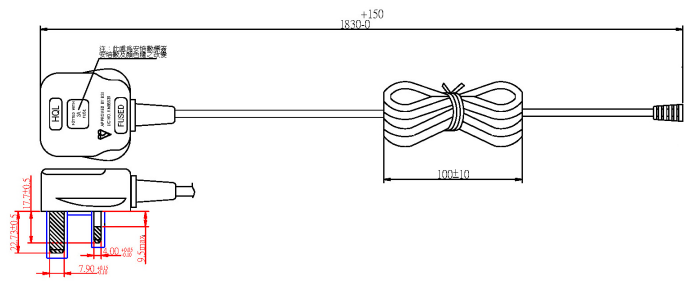
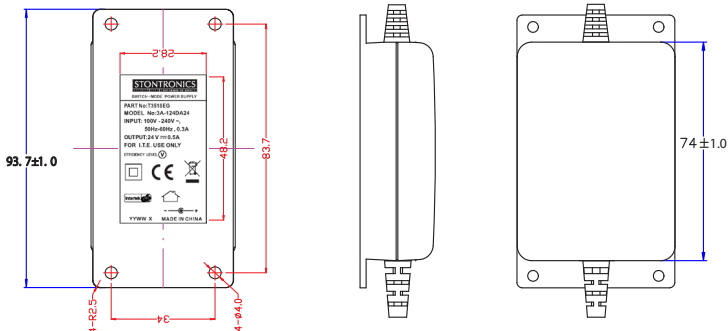
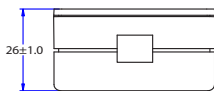
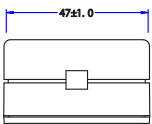
Level  Compliant



Mechanical Drawings (mm)



#20AWGX2C UL2468 HAVE ON WORD WIRE IN OUTER, NO WORD WIRE IN INNER



Input

Input Voltage Rating 100 - 240 VAC
 Input Voltage Range 90 - 264 VAC
 Input Frequency Rating 50 - 60 Hz
 Input Frequency Range 47 - 63 Hz
 Input Current 300mA RMS Max
 Inrush Current 30A @ 115VAC / 60A @ 230VAC Max.
 Leakage Current <0.25mA
 Input Power (with no load)..... <0.3W
 AC Plug UK (1.8M lead)

Output

Output Voltage 24VDC
 Minimum Load Current 0 Amp
 Nominal Load Current 0.5Amp
 Nominal Load Power 12Watts
 Load Regulation +/- 5 %
 Ripple And Noise 240 mV p-p Maximum
 Efficiency 77.7% min. (meets ErP/EuP Level V)
 Short circuit protection Output shut down and auto restart
 Over Voltage protection .. clamped by internal protection zener
 Connector Straight 2.1 x 5.5 x 12mm C+ve (with 1.8M lead)

Other

Dimensions 75 (L) * 47.5 (W) * 26.5 (H) mm
 Operating Temperature 0 °C To 40 °C
 Storage Temperature -10 °C To 70 °C
 Operating Humidity 20 ~ 80 % Rh. Non-Condensing
 Storage Humidity 10 ~ 90 % Rh. Non-Condensing

Safety

Emi Standards
 Meets FCC class B, CE, VCCI – II

Safety Standards
 Safety approved to: GS & CE
 Hi-Pot: I/P to O/P 3000VAC or 4242VDC 10mA 1min
 Insulation Resistance: 500VDC test not less than 100Mohm
 RoHS Compliant

Disclaimer

Stontronics Ltd accepts no responsibility for typographical errors in the production of this leaflet. Product specifications are subject to change without notice.

Stontronics Ltd is ISO 9001:2008 registered.



For more information please contact us:
 Stontronics Ltd,
 Chancerygate Business Centre, Cradock Road, Reading, Berkshire, RG2 0AH
 Tel: 0118 931 1199
 Fax: 0118 931 1145
 Email: info@stontronics.co.uk
www.stontronics.co.uk