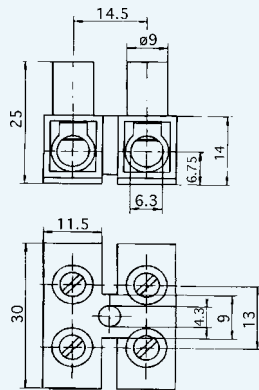
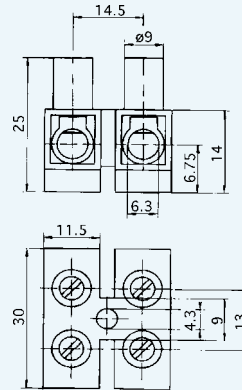


STANDARD BASE



RAISED BASE



Length = number of poles
x 14.5 less 3mm



SECTION 1C
TERMINAL BLOCKS -
STRIP TYPE

TECHNICAL DATA

Mouldings:	Nylon 6, natural, UL94 V0
Inserts:	Tinned brass
Screws:	M5, steel, zinc plated and yellow chromated
Wire protectors:	Stainless steel
Maximum working temp:	80°C
Current rating:	82 amp
Voltage rating:	500V ~ (pollution degree 3)
Tracking distance:	KB >600
Conductor size:	Without protectors 16mm ² With protectors 10mm ²
Stripping length:	9mm

FEATURES

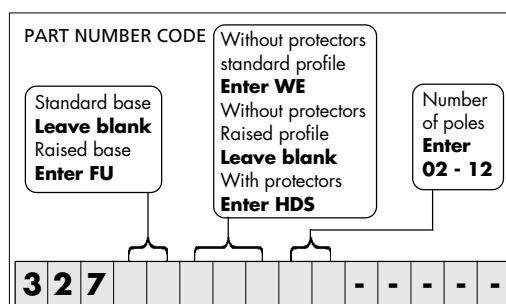
Series 327 terminal blocks are suitable for very heavy duty applications. Supplied in standard profile and raised base (suffixed FU) for applications where creepage and clearance distances must be observed. They are available with or without wire protectors. Captive screws are fitted as standard.

OPTIONS

Marking: special printing available. Please provide sketch.

Cut lengths: standard 12 pole lengths can be cut to shorter lengths.

APPROVALS



01273 431600



01273 439288



sales@metway.co.uk