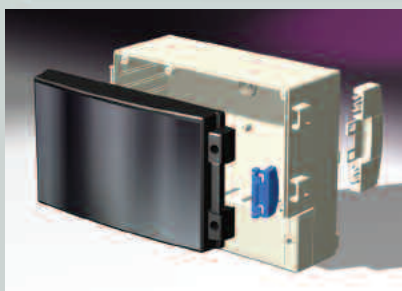
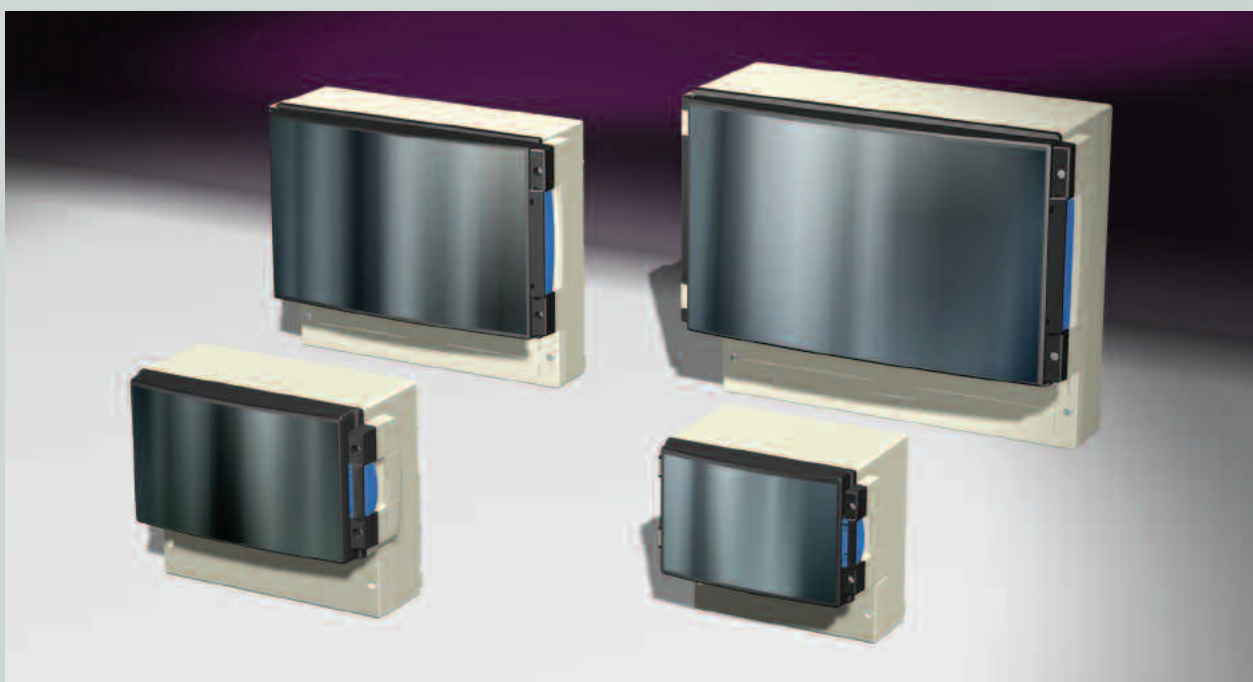


*new*

# FIBOX<sup>®</sup> CARDMASTER 3







## SAFE AND SECURE ENCLOSURE SOLUTIONS

- IP65 rated
- Impact resistant polycarbonate or ABS
- Improved locking system
- Separate compartment for terminal wiring
- New transparent door
- Variety of wall mounting options
- Built in PCB card guides
- Wide range of models, sizes and accessories

The all new, IP65 rated, Fibox Cardmaster 3 family of enclosures is designed to provide the ultimate solution to instrumentation packaging. Ideal for measurement, monitoring and process control equipment, Cardmaster 3 looks good and performs well. Modern, durable materials are combined with an improved locking system and transparent door options, to house and protect instrumentation and electronics. PCB guides, knock outs, a terminal wiring compartment and wall mounting options make installing and using a Cardmaster 3 easy.



	<b>ENCLOSURES WITHOUT MAIN COVER</b>
	<b>INCLUDING</b> Enclosure base, terminal compartment cover and mounting screws.
	<b>ENCLOSURES WITH SMOKED GREY TRANSPARENT COVER</b>
	<b>INCLUDING</b> Enclosure base, transparent cover, terminal compartment cover, polyamide hinges, locking devices, wall fastening cover plug and mounting screws.
	<b>ENCLOSURES WITH POLYCARBONATE FRONT FRAME</b>
	<b>INCLUDING</b> Enclosure base, terminal compartment cover, closed PC frame front plate with cover screws and mounting screws.
	<b>ENCLOSURES WITH INCH KNOCK-OUTS AND FRONT PLATE</b>
	<b>INCLUDING</b> Enclosure base with inch knock-outs, transparent cover, front plate, terminal compartment cover, polyamide hinges, locking devices and mounting screws.

Order symbol	Size (mm)
PC 17/16-LC3	166 x 160 x 80
ABS 17/16-LC3	166 x 160 x 80
PC 17/16-C3	166 x 160 x 105
ABS 17/16-C3	166 x 160 x 105
PC 21/18-C3	213 x 185 x 87
ABS 21/18-C3	213 x 185 x 87
PC 30/25-C3	296 x 256 x 92
ABS 30/25-C3	296 x 256 x 92
PC 36/31-C3	363 x 316 x 130
ABS 36/31-C3	363 x 316 x 130

Order symbol	Size (mm)
PC 17/16-L3	166 x 160 x 106
ABS 17/16-L3	166 x 160 x 106
PC 17/16-3	166 x 160 x 134
ABS 17/16-3	166 x 160 x 134
PC 21/18-3	213 x 185 x 117
ABS 21/18-3	213 x 185 x 117
PC 30/25-3	296 x 256 x 123
ABS 30/25-3	296 x 256 x 123
PC 36/31-3	363 x 316 x 162
ABS 36/31-3	363 x 316 x 162

Order symbol	Size (mm)
PC 17/16-LFC3	166 x 160 x 102
PC 17/16-FC3	166 x 160 x 115
PC 21/18-FC3	213 x 185 x 100

Order symbol	Size (mm)
PC 21/18-3 USA	213 x 185 x 117
PC 30/25-3 USA	296 x 256 x 123
PC 36/31-3 USA	363 x 316 x 162



## ACCESSORIES

Product/size	Order symbol	Size mm
<b>BACK PANELS</b>		
	MP 17/16	136 x 133
	MP 21/18	200 x 142
	MP 30/25	282 x 215
	MP 36/31	345 x 285
<b>FRONT PLATES</b>		
17/16	FP 17/16	160 x 100
21/18	FP 21/18	207 x 119
30/25	FP 30/25	290 x 190
36/31	FP 36/31	351 x 225
<b>FRONT PLATE FRAMES, IP 65</b>		
	FC PC 17/16	166 x 106 x 10
Screw fastening, polycarbonate	FC PC 21/18	213 x 125 x 12
<b>COVERS</b>		
17/16	CM 17/16-3T	166 x 106 x 29
21/18	CM 21/18-3T	213 x 125 x 30
30/25	CM 30/25-3T	296 x 196 x 36
36/31	CM 36/31-3T	363 x 271 x 36
<b>HINGE AND LATCH SETS</b>		
	SET 17/16-21/18-3	
	SET 30/25-3	
	SET 36/31-3	
<b>WALL MOUNTING LUG</b>		
	FP 10674	
<b>DIN-RAIL SUPPORT</b>		
	MB 20064 SET	

[www.fibox.com](http://www.fibox.com)



**Fibox Oy Ab**, Jorvaksenniitty, P.O.Box 16, FI-02421 Jorvas, Finland  
**Tel int.** +358 9 295 531 **Fax** +358 9 2955 3200 **Email** info@fibox.fi, sales@fibox.fi