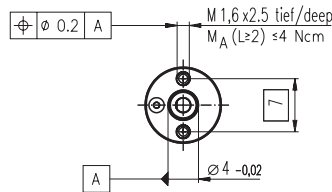
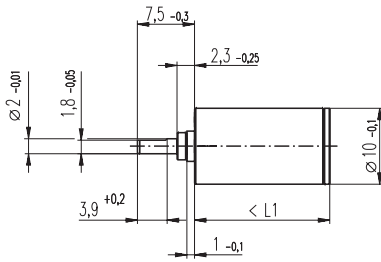


Planetary Gearhead GP 10 K $\varnothing 10$ mm, 0.005 - 0.1 Nm

Plastic Version



Technical Data

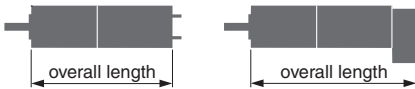
Planetary Gearhead	straight teeth
Housing	plastic
Output shaft	stainless steel
Bearing at output	sleeve bearings
Radial play, 5 mm from flange	max. 0.08 mm
Axial play	0.02 - 0.10 mm
Max. perm. radial load, 5 mm from flange	1 N
Max. permissible axial load	2 N
Max. permissible force for press fits	10 N
Recommended input speed	< 8000 rpm
Recommended temperature range	-15 ... +65°C

M 1:1

- Stock program
- Standard program
- Special program (on request!)

Order Number

Gearhead Data	Order Number				
	110308	110309	110310	110311	110312
1 Reduction	4 : 1	16 : 1	64 : 1	256 : 1	1024:1
2 Reduction absolute	4	16	64	256	1024
3 Number of stages	1	2	3	4	5
4 Max. continuous torque at gear output Nm	0.005	0.015	0.054	0.100	0.100
5 Intermittently permissible torque at gear output Nm	0.005	0.015	0.054	0.100	0.100
6 Sense of rotation, drive to output	=	=	=	=	=
7 Max. efficiency %	90	80	70	60	55
8 Weight g	2.1	2.5	2.8	3.2	3.6
9 Average backlash no load °	1.8	2.0	2.2	2.5	2.8
10 Mass inertia gcm ²	0.004	0.003	0.003	0.003	0.003
11 Gearhead length L1 mm	10.2	14.3	18.4	22.5	26.6



Combination:

+ Motor	Page	+ Tacho / Encoder / Brake	Page	Overall length [mm] = Motor length + gearhead length + (tacho / encoder / brakes) + assembly parts				
RE 10, 0.75 W	51 / 52			27.3	31.4	35.5	39.6	43.7
RE 10, 0.75 W	52	MR Encoder	206/207	32.9	37.0	41.1	45.2	49.3
RE 10, 0.75 W	52	Digital Magnetic Encoder 10	222	35.4	39.5	43.6	47.7	51.8
RE 10, 1.5 W	53 / 54			34.9	39.0	43.1	47.2	51.3
RE 10, 1.5 W	54	MR Encoder	206/207	40.5	44.6	48.7	52.8	56.9
RE 10, 1.5 W	54	Digital Magnetic Encoder 10	222	43.0	47.1	51.2	55.3	59.4
A-max 12	99 / 100			31.5	35.6	39.7	43.8	47.9
A-max 12	100	MR Encoder	206/207	35.4	39.5	43.6	47.7	51.8