

**TECHNICAL CHARACTERISTICS**

**MATERIAL**  
 INSULATOR: PBT  
 FLAMABILITY RATING: UL94-V0  
 COLOR: BLUE  
 CONTACT MATERIAL: COPPER ALLOY  
 CONTACT TYPE: STAMPED  
 CONTACT PLATING: SELECTIVE GOLD  
 SHIELDING: STEEL TIN PLATED  
 QUALITY CLASS: 3 AS PER CECC 75 301-802

**ENVIRONMENTAL**  
 OPERATING TEMPERATURE: -40 UP TO 85°C  
 COMPLIANCE: LEAD FREE AND ROHS

**ELECTRICAL**  
 CURRENT RATING: 3A  
 WORKING VOLTAGE: 250V AC  
 INSULATOR RESISTANCE: >3000 MOHM  
 DIELECTRIC WITHSTANDING VOLTAGE: 1000V AC/MN  
 CONTACT RESISTANCE: 30 MOHM MAX

**STANDARD**  
 CERTIFIED: E323964 / MODEL NUMBER 618-22F

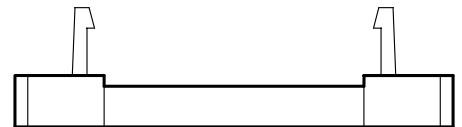
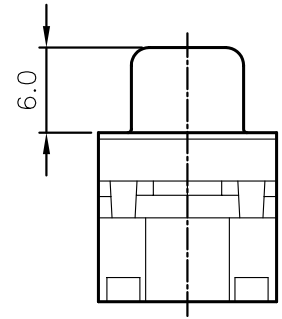
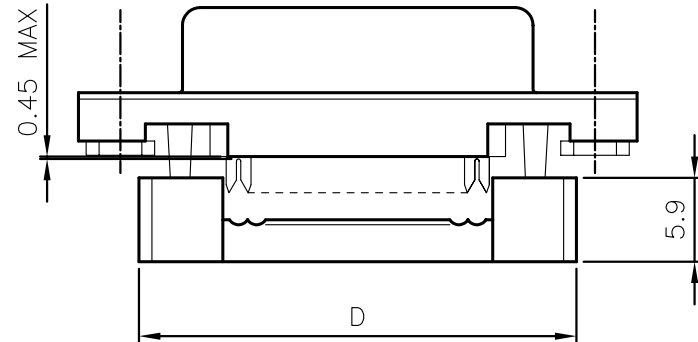
**PACKAGING**  
 TRAY + BAG\*  
 \*Strain relief is always delivered in a separate bag for optional use

**DIMENSION**

PINS	A	B	C	D
9	16.30	25.00	30.80	22.40
15	24.60	33.30	39.20	30.80
25	38.30	47.10	53.10	44.50
37	54.80	63.50	69.40	61.40

**NOTE**  
 Pre-crim position (can slightly vary because of not totally fixed part)  
 After crimp position (can slightly vary depends on the tooling used)

4#40 Thread or M3 Thread



RoHS Compliant				PROJECTION:	GENERAL TOLERANCE		<b>DESCRIPTION: FEMALE IDC WITH UNC 4-40 NUT D-SUB</b>	<b>SIZE</b> <b>A4</b>
G					.X = +/- 0.2 .XX = +/- 0.15			
F	16-MAR-11	NEW DRAWING	GG					
E	18-MAR-10	CRIMP POSITION	JP					
D	07-DEC-09	WORKING VOLT.	JP					
C	19-NOV-09	STANDARD	JP					
B	28-JUL-09	UNC 4-40 NUT	JP					
A	07-NOV-08	PDF	JP					
REV	DATE	FILE	BY	APPROVAL: RJ	UNIT: MM			
					SCALE:			
					SHEET: 1/1			
					DRAW: JOE			