

PRODUCT DATASHEET

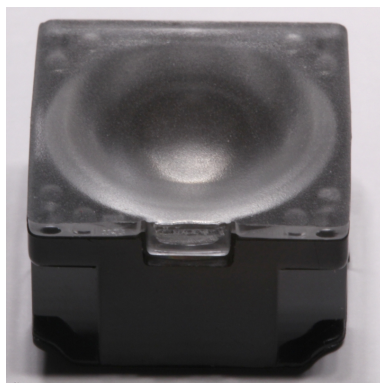
Laura-XP series



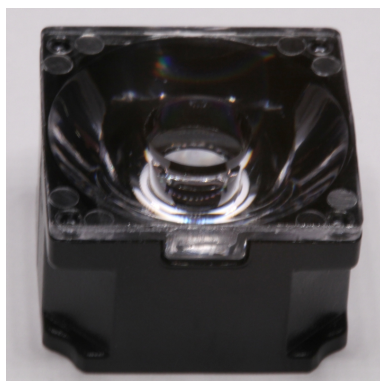
Ordering number	CA11365		
Description	CA11365-Laura-O-XP-G-tape		
Family	Laura	FWHM	0 degrees
Type	Lens	Efficiency	-
LED	XP-G	cd/Im	-
Color	Black	Gerber File	Available
Diameter	21.6 mm		
Height	13.1 mm		
Style	Square		
Optic Material	PMMA		
Holder Material	PC		
Fastening	Tape		
Status	Ready		



Ordering number	CA11525		
Description	CA11525_Laura-Refl-W-XP-G-tape		
Family	Laura	FWHM	0 degrees
Type	Reflector	Efficiency	-
LED	XP-G	cd/Im	-
Color	Black	Gerber File	Available
Diameter	21.6 mm		
Height	13.1 mm		
Style	Square		
Optic Material	PC		
Holder Material	PC		
Fastening	Tape		
Status	Ready		



Ordering number	CA11355		
Description	CA11355-Laura-M-XP-G-tape		
Family	Laura	FWHM	0 degrees
Type	Lens	Efficiency	-
LED	XP-G	cd/Im	-
Color	Black	Gerber File	Available
Diameter	21.6 mm		
Height	13.1 mm		
Style	Square		
Optic Material	PMMA		
Holder Material	PC		
Fastening	-		
Status	Ready		



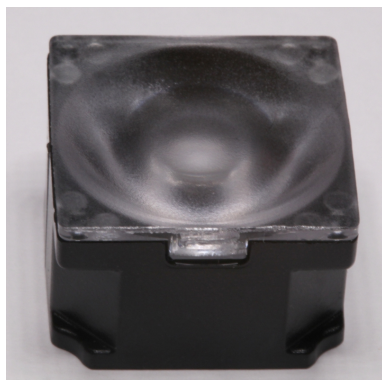
Ordering number	CA11353		
Description	CA11353_Laura-RS-XP-G-tape		
Family	Laura	FWHM	11 degrees
Type	Lens	Efficiency	-
LED	XP-G	cd/Im	-
Color	Black	Gerber File	Available
Diameter	21.6 mm		
Height	13.1 mm		
Style	Square		
Optic Material	PMMA		
Holder Material	PC		
Fastening	-		
Status	Ready		

PRODUCT DATASHEET

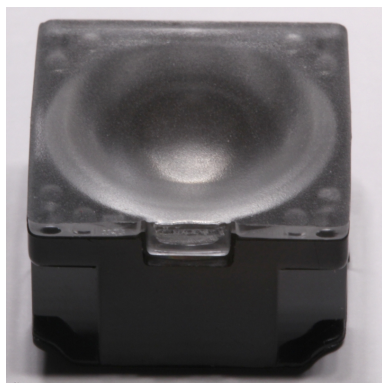
Laura-XP series



Ordering number	CA11643		
Description	CA11643_Laura-SS-XP-G-tape		
Family	Laura	FWHM	11 degrees
Type	Lens	Efficiency	-
LED	XP-G	cd/Im	-
Color	Black	Gerber File	Available
Diameter	21.6 mm		
Height	13.1 mm		
Style	Square		
Optic Material	PMMA		
Holder Material	PC		
Fastening	Tape		
Status	Ready		



Ordering number	CA11360		
Description	CA11360-Laura-D-XP-G-tape		
Family	Laura	FWHM	16 degrees
Type	Lens	Efficiency	-
LED	XP-G	cd/Im	-
Color	Black	Gerber File	Available
Diameter	21.6 mm		
Height	13.1 mm		
Style	Square		
Optic Material	PMMA		
Holder Material	PC		
Fastening	Tape		
Status	Ready		



Ordering number	CA12131		
Description	CA12131_Laura-M-XP-G-tape-white		
Family	Laura	FWHM	30 degrees
Type	Lens	Efficiency	-
LED	XP-G	cd/Im	-
Color	White	Gerber File	Available
Diameter	21.6 mm		
Height	13.1 mm		
Style	Square		
Optic Material	PMMA		
Holder Material	PC		
Fastening	-		
Status	Ready		

Ordering number	CA11766		
Description	CA11766_Laura-WW-XP-tape		
Family	Laura	FWHM	64 degrees
Type	Lens	Efficiency	86 %
LED	XP-G	cd/Im	-
Color	Black	Gerber File	Available
Diameter	21.6 mm		
Height	13.1 mm		
Style	Square		
Optic Material	PMMA		
Holder Material	PC		
Fastening	Tape		
Status	Ready		



PRODUCT DATASHEET

Laura-XP series

Ordering number	CA11766		
Description	CA11766_Laura-WW-XPG-tape		
Family	Laura	FWHM	64 degrees
Type	Lens	Efficiency	86 %
LED	XP-G	cd/Im	-
Color	Black	Gerber File	Available
Diameter	21.6 mm		
Height	13.1 mm		
Style	Square		
Optic Material	PMMA		
Holder Material	PC		
Fastening	Tape		
Status	Ready		

NOTE: The typical divergence will be changed by different color, chip size and chip position tolerance. The typical total divergence is the full angle measured where the luminous intensity is half of the peak value.



PRODUCT DATASHEET

Laura-XP series

GENERAL INFORMATION

- Product series especially designed & optimized for XP-G series of LEDs.
- Special care taken to make light distribution as uniform as possible.
- Lens material optical grade PMMA with high UV and temperature resistance (105 degrees of Celcius / 220 degrees of Fahrenheit). Allows use of high current and temperature conditions.

Please find more information about used material from below:

http://ledil.fi/sites/default/files/Documents/Technical/Material/PMMA%20N%20UL94_Yellow%20Card.pdf

<http://ledil.fi/sites/default/files/Documents/Technical/Material/PMMA%20N%20PLEXIGLAS-Datasheet.pdf>

- Lens material optical grade PC with high UV and temperature resistance (120 degrees of Celcius / 248 degrees of Fahrenheit). Allows use of high current and temperature conditions.

Please find more information about used materials from below:

http://ledil.fi/sites/default/files/Documents/Technical/Material/PC%20Makrolon%202400_2407_2456_2458-UL.pdf

- Reflector is made of aluminium coated PC (120 degrees of Celcius / 248 degrees of Fahrenheit) with protective lacquer (110 degrees of Celcius / 230 degrees of Fahrenheit).
- Optic holder molded by high quality PC material (120 dergees of Celcius / 248 degrees of Fahrenheit).

- Fastening to heat sink with a PU foam adhesive tape of automotive grade. Please find fastening details by clicking link: http://www.ledil.com/datasheets/DataSheet_TAPE.pdf

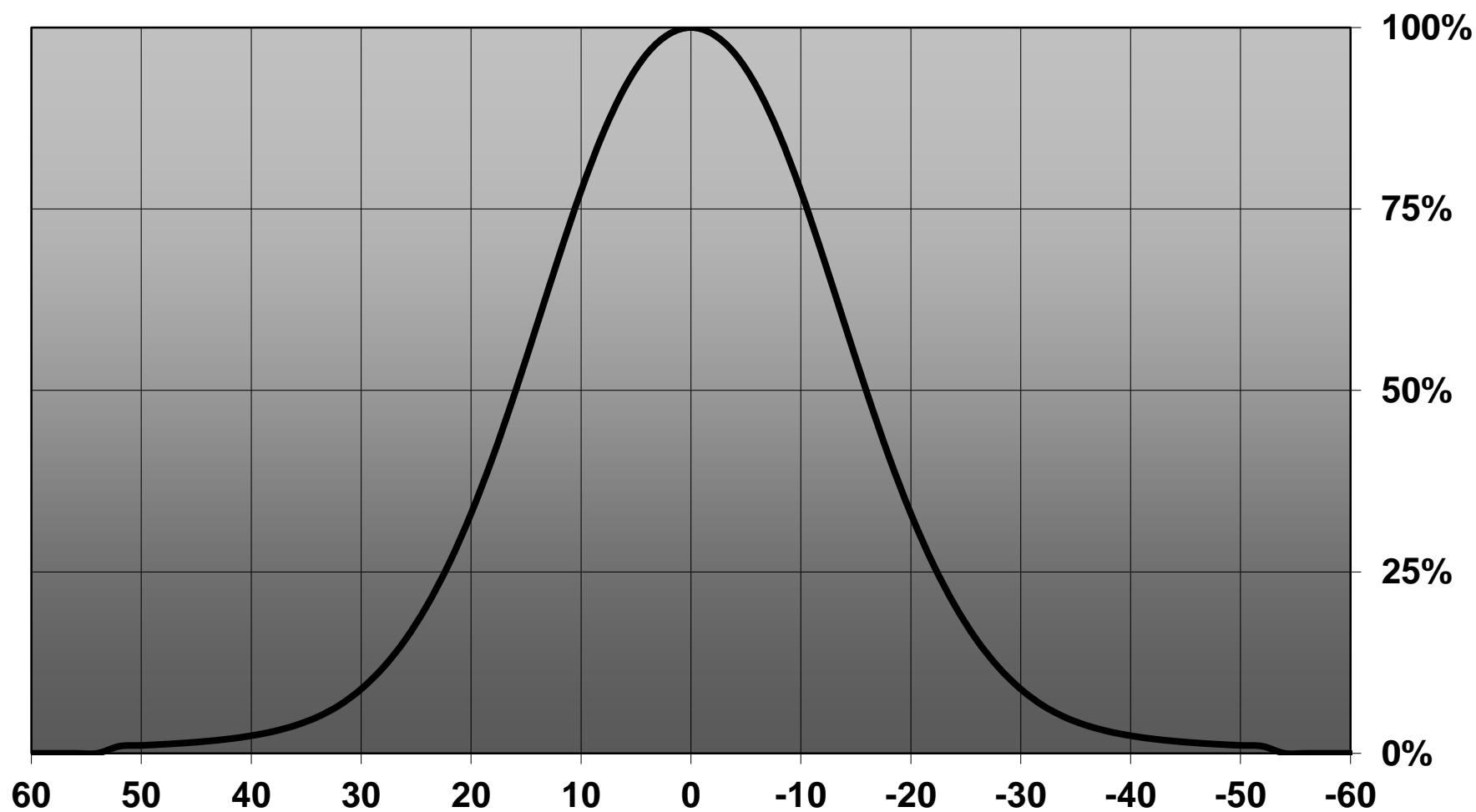
NOTE 1: We advise customer to ensure the suitability and sufficiency of the bond in the end product. For example, mechanical stress, vibration and holes on the surface of the circuit board weaken the strength of the tape.

NOTE 2: Assembly to the surface must be made straight, so the tape bonds constant and balanced with fastening surface. Slanted assembly might cause unbalanced bond to the surface. All surfaces where tape is applied must be clean, dry and free from grease and dirt.

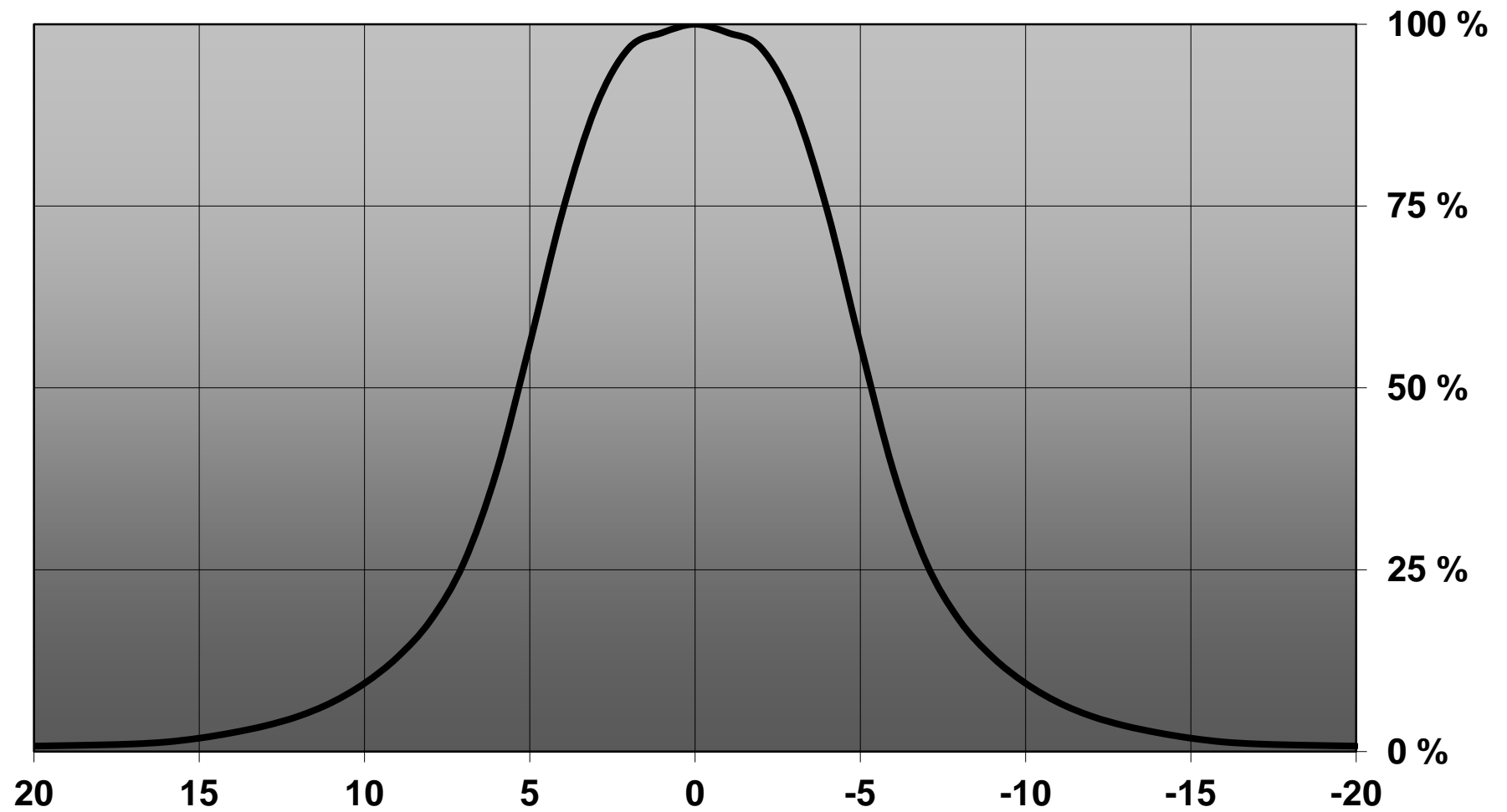
If cleaning of PCB surfaces is needed, please follow strictly the cleaning instructions of your LED manufacturer - this is important as cleaning shall under no circumstances damage LEDs or other electronics components on the PCB.

Further note that optical components shall not be cleaned with any chemicals - only micro fiber cloth may be used to remove fingerprints or other traces from handling.

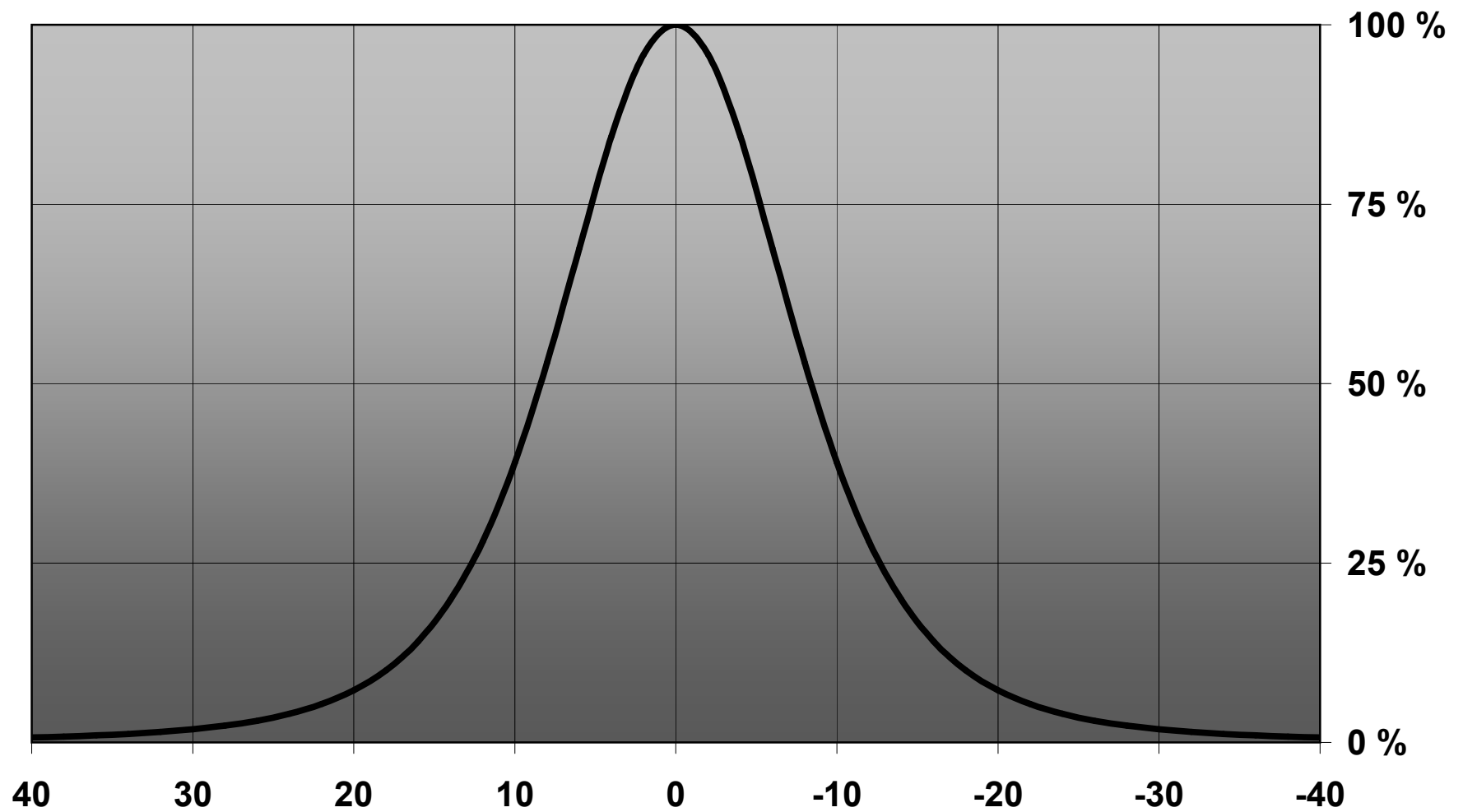
Relative intensity of CA11837_Laura-M-Pin-XP-G-tape



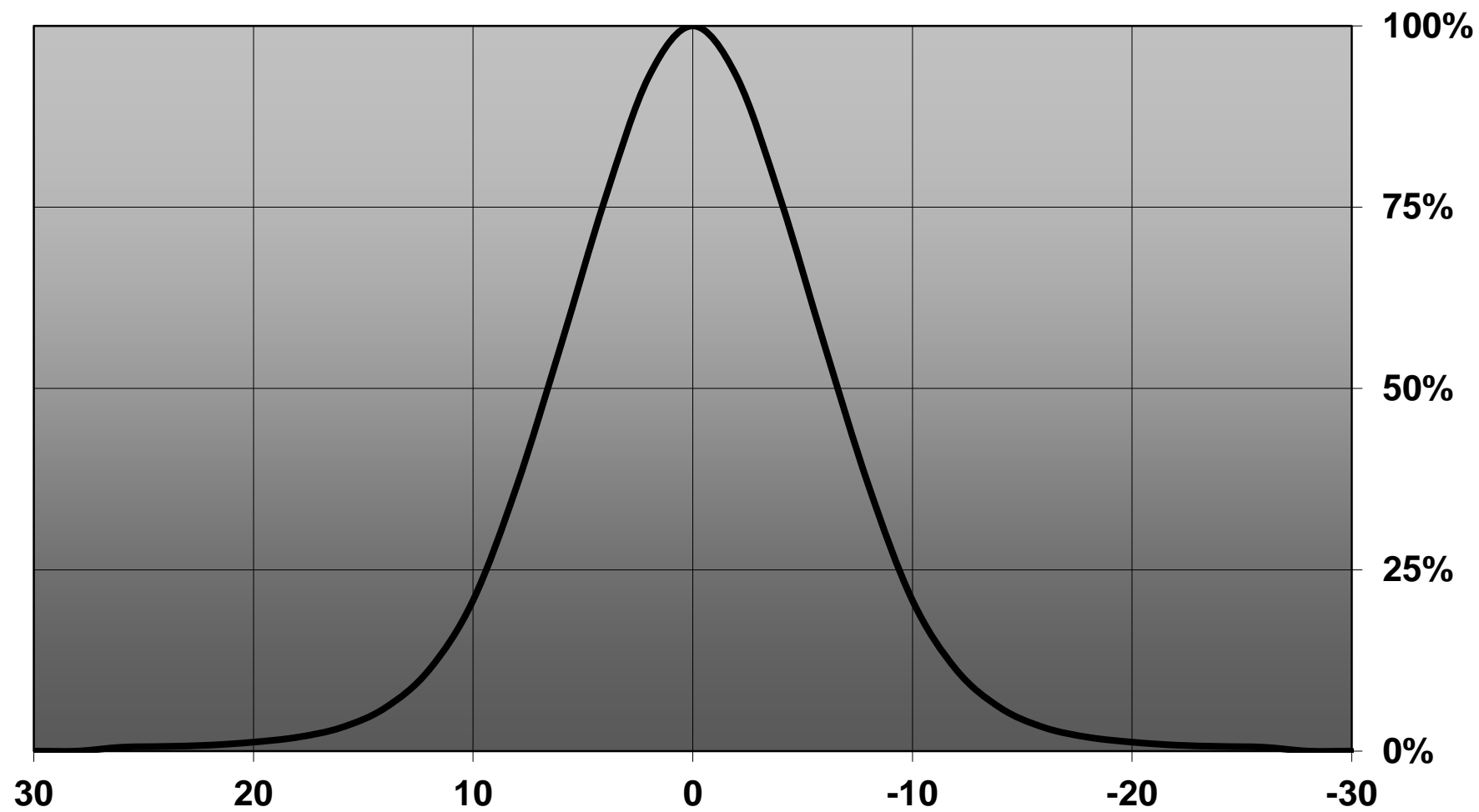
Relative Intensity of CA11959_Laura-RS-Pin-XP-G-tape



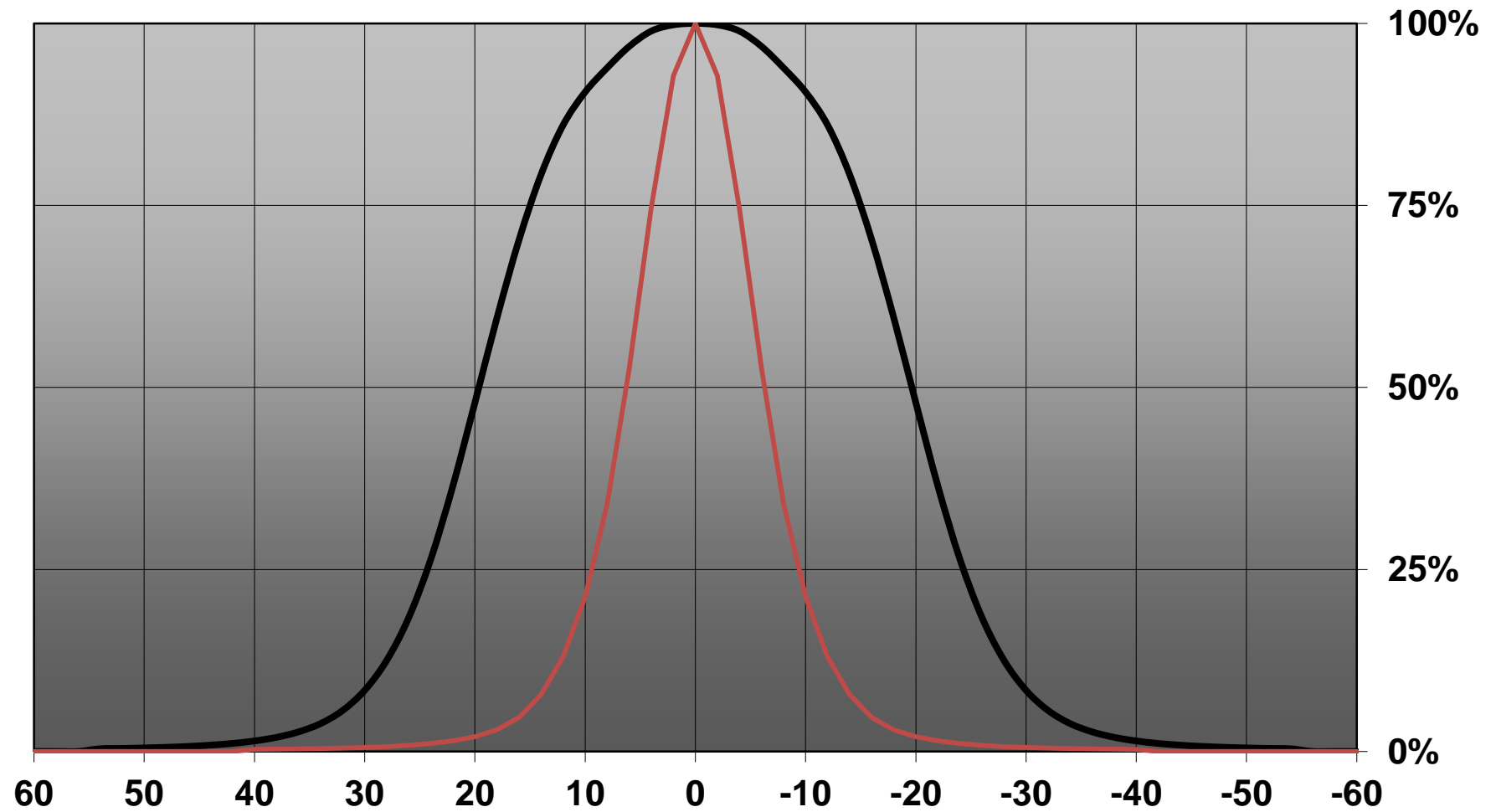
Relative intensity of CA11361_Laura-D-XP-G-tape

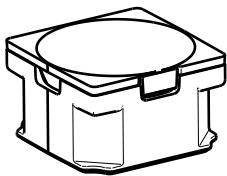


Relative intensity of CA12011_Laura-SS-Pin-XP-G-tape

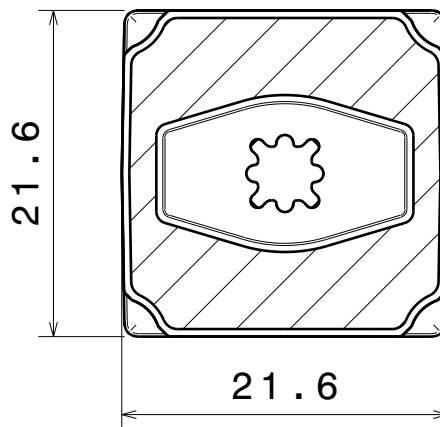


Relative intensity of CA12012_Laura-O-Pin-XP-G-tape

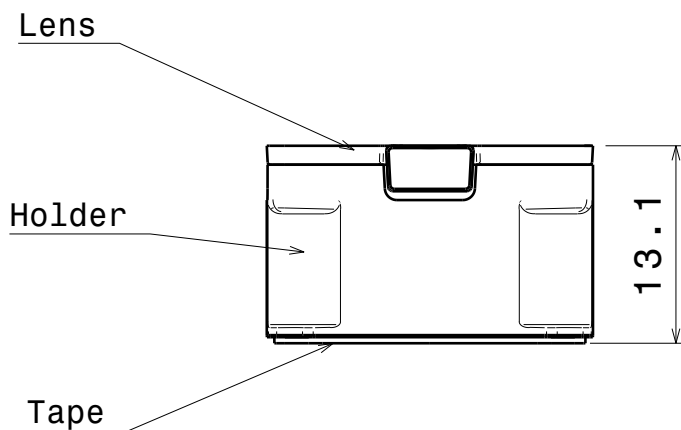




Isometric view
Scale: 1:1



Bottom view



Front view

Materials
lens: PMMA
holder: PC, black
Tape: PU Foam

This drawing is our property.
It can't be reproduced
or communicated without
our written agreement.



L
T
F
F

e
e
l
i
n
N

d
h

DRAWING TITLE

Datasheet Laura-tape series assy

DRAWN BY

p

DATE

11.06.2010

CHECKED BY

h

DATE

25.01.2010

DESIGNED BY

hh

DATE

21.01.2010

SIZE

A4

DRAWING NUMBER

CA11353

REV

1

SCALE

2:1

WEIGHT (g)

SHEET

1/1

D

A