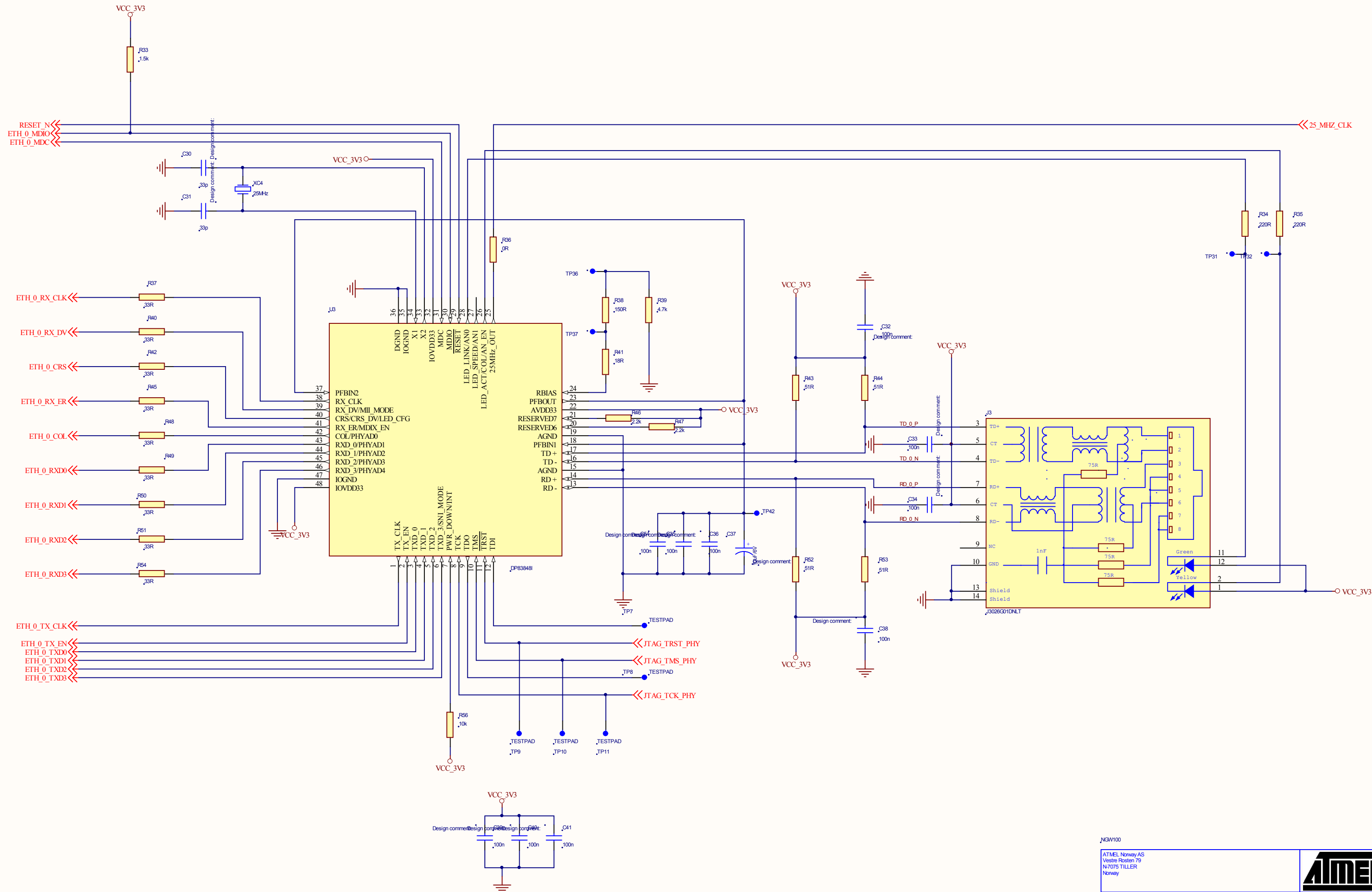




# ETHERNET PORT 0



NGM100

ATMEL Norway AS  
Vestre Rosten 79  
N-7075 TILLER  
Norway



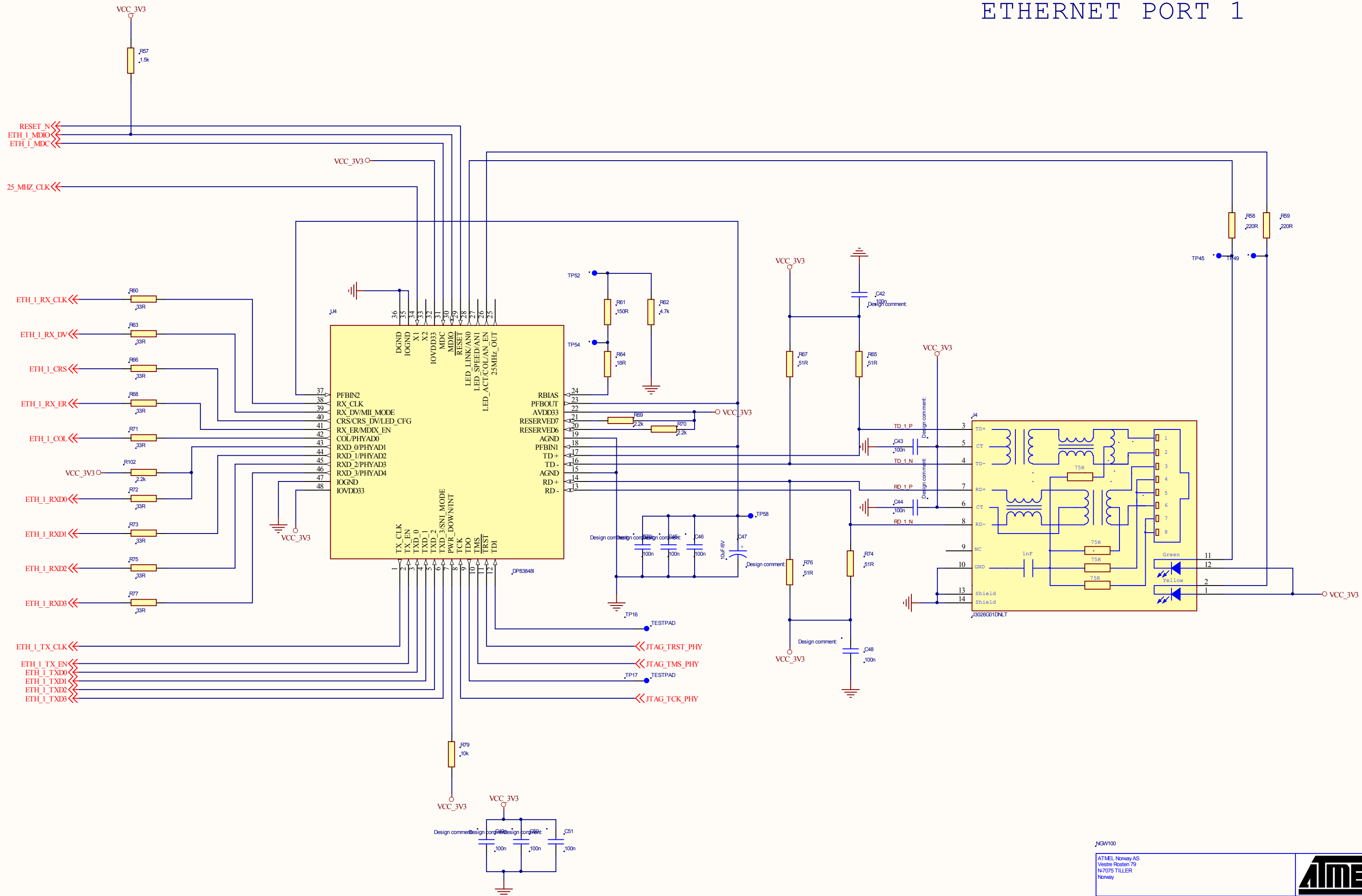
Title Ethernet port 0

Size A Document Number

Rev

PE3

# ETHERNET PORT 1



NGM100

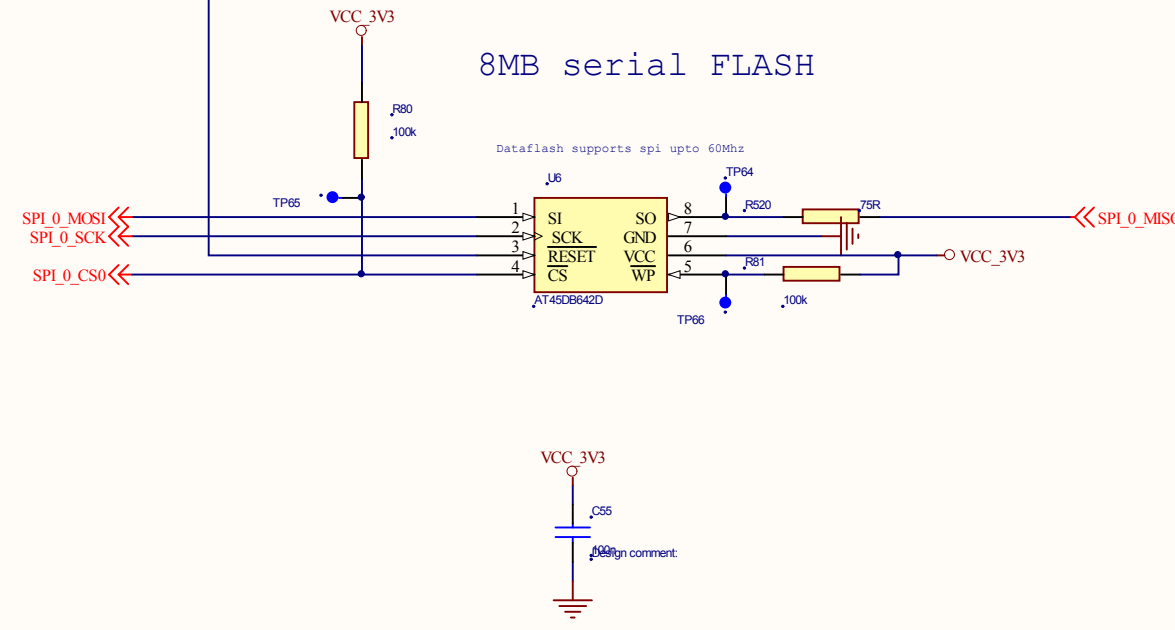
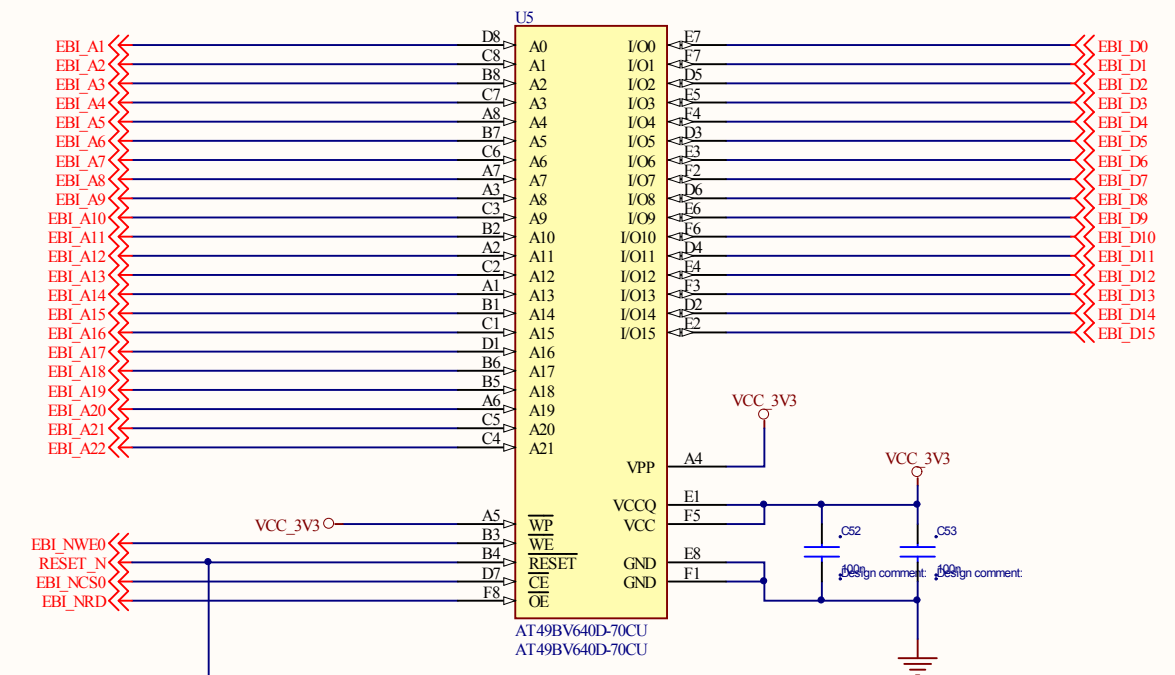
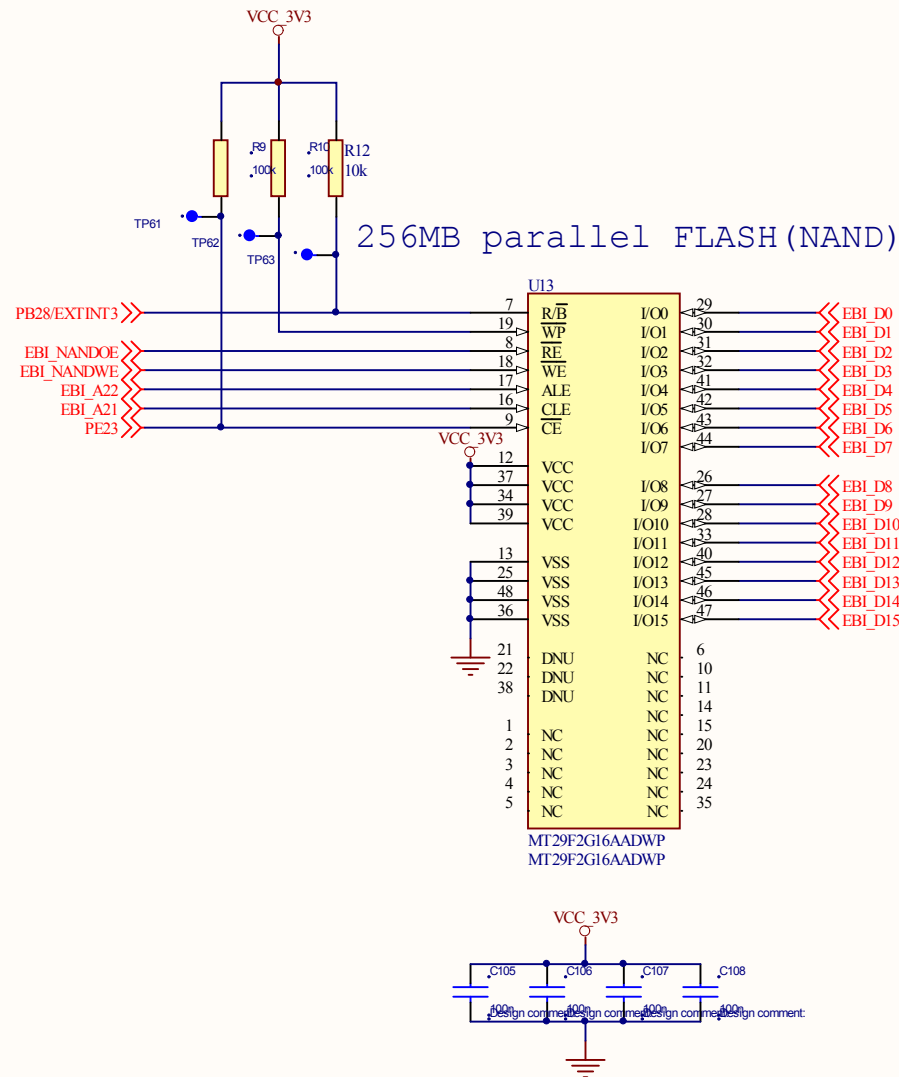
ATMEL Norway AS  
Vestre Rosten 79  
N-7075 TILLER  
Norway

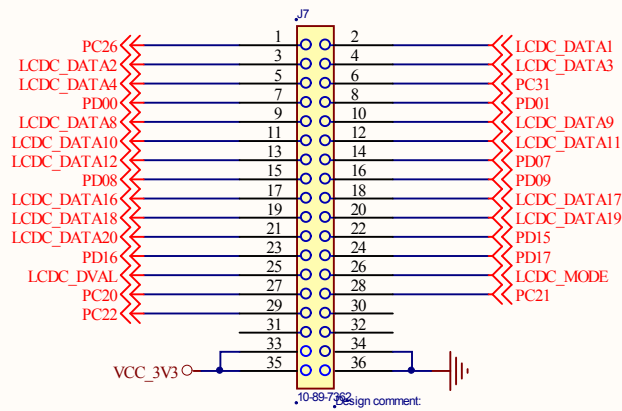
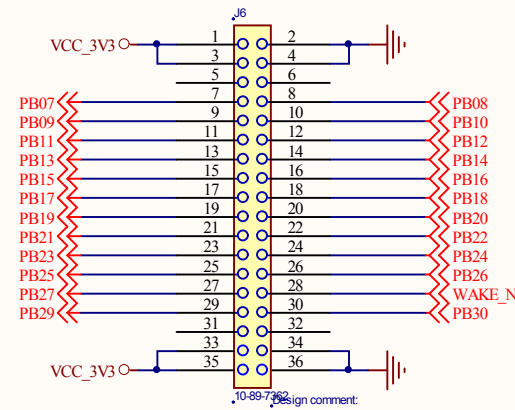
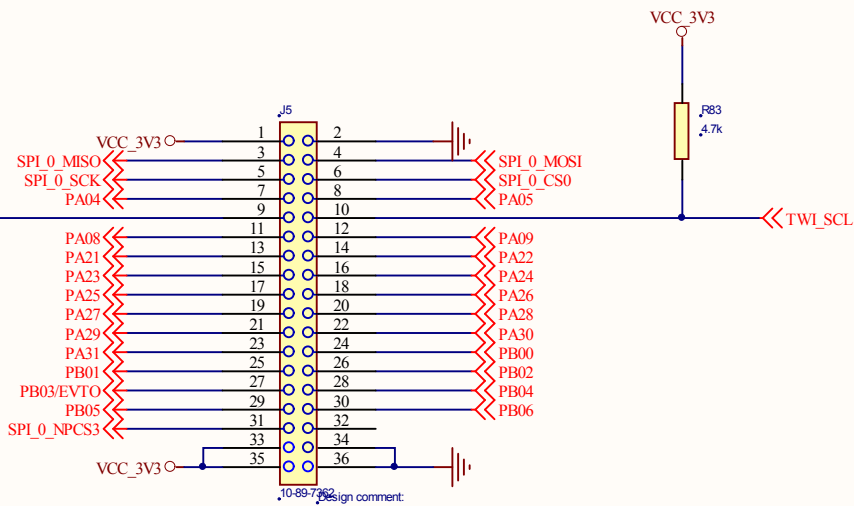
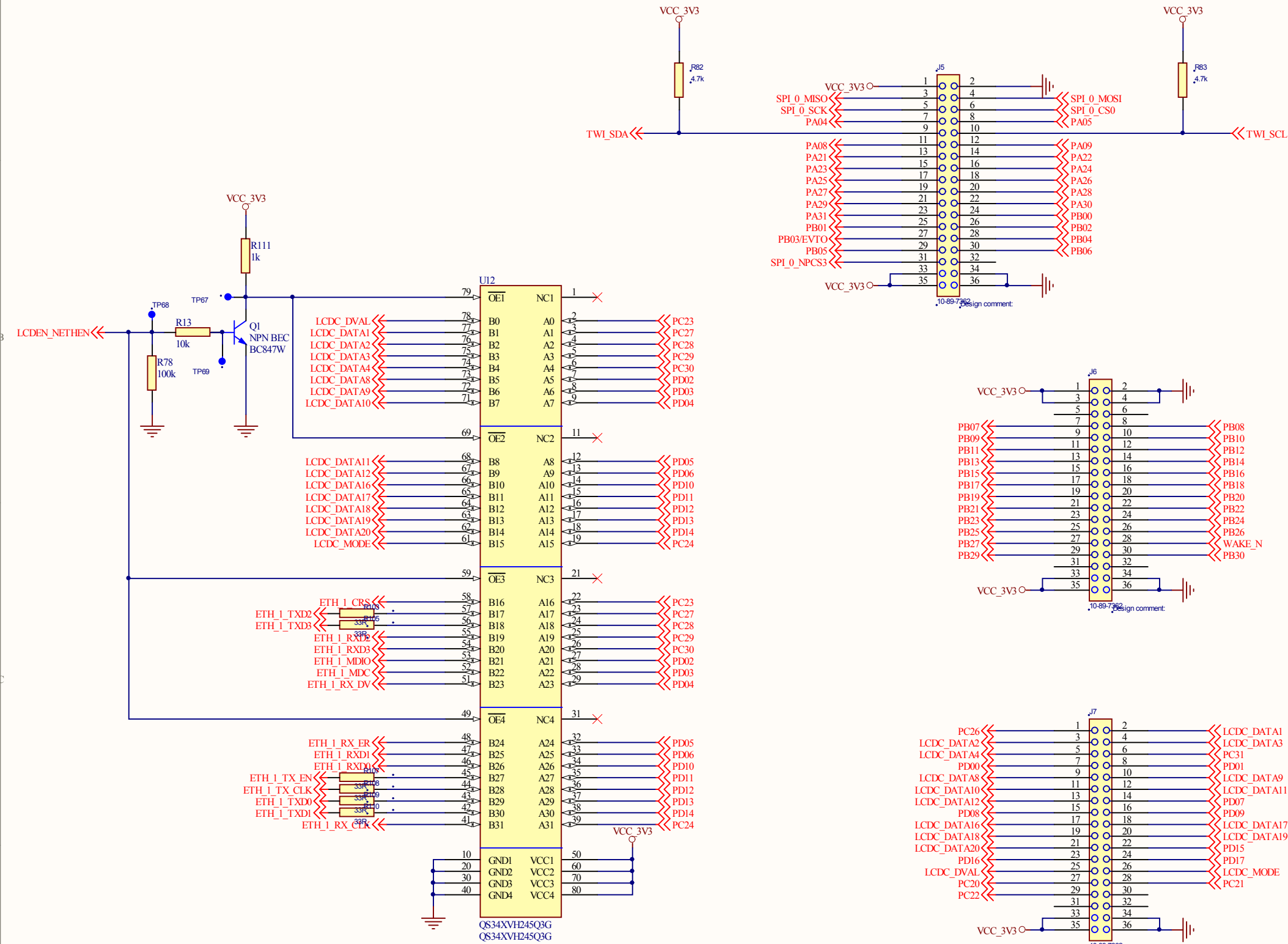


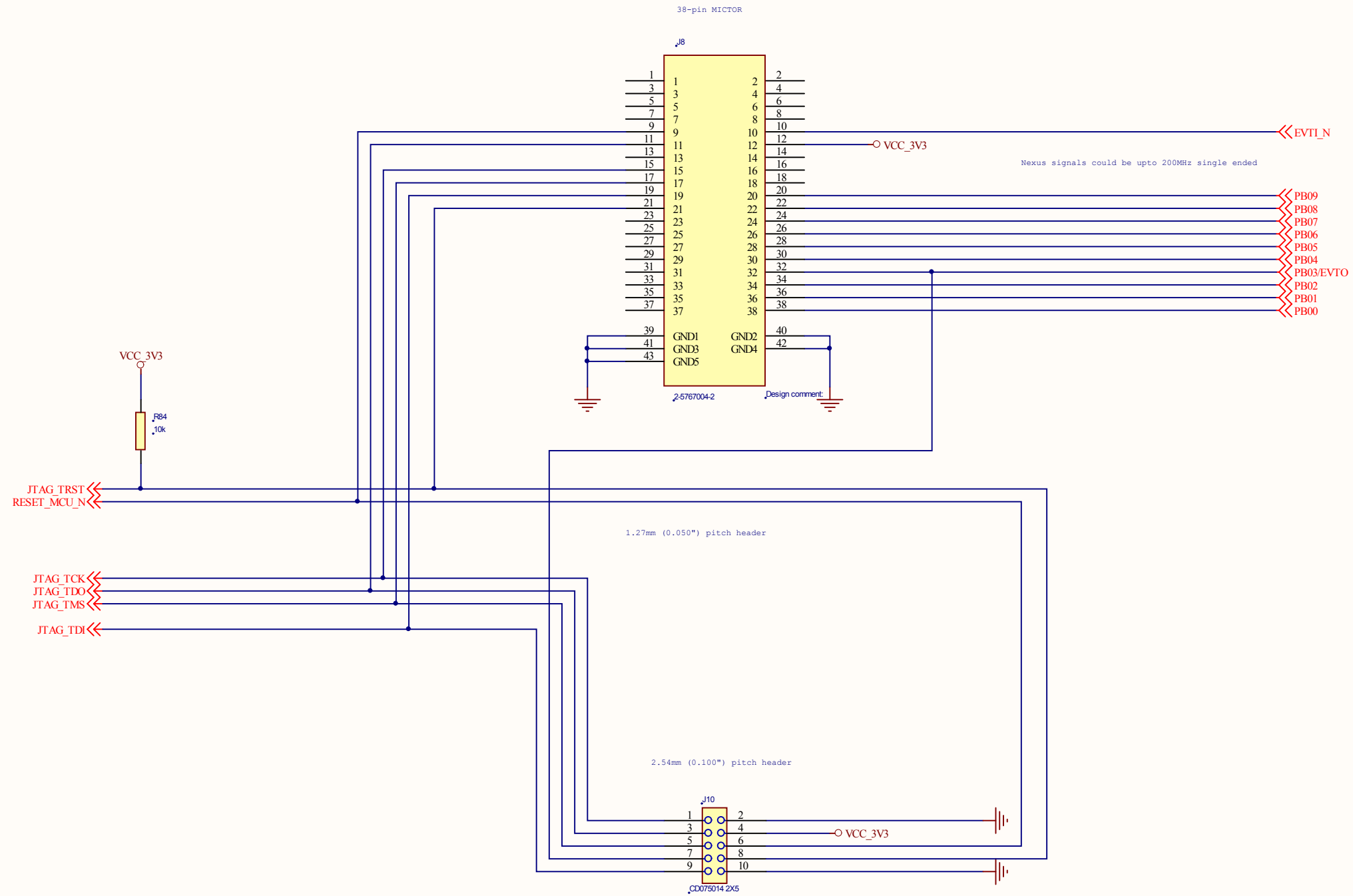
Title	Ethernet port 1	
Size	Document Number	Rev
A		PE3

NOTE: The serial FLASH are possible to update with larger memories in the future within the same footprint.

8MB parallel FLASH (NOR)







<Core Design>

ATMEL Norway AS  
Vestre Rosten 79  
N-7075 TILLER  
Norway



Title JTAGNEXUS

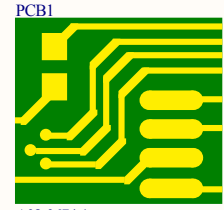
Size A Document Number

Rev PE3

File

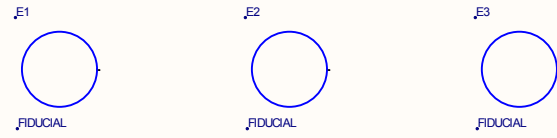
Sheet 11 of 13



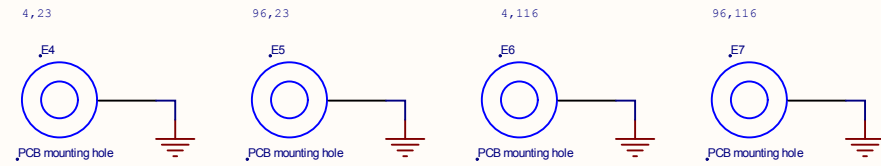


A08-0674.1

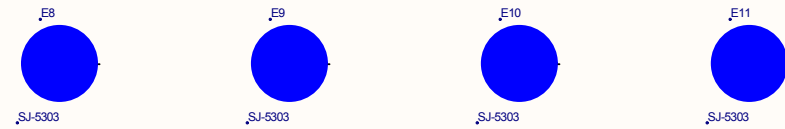
LABEL1  
Product number/revision  
Serial number  
Label PCBA



x,y mm from lower left corner:



Rubber feet, one in each corner



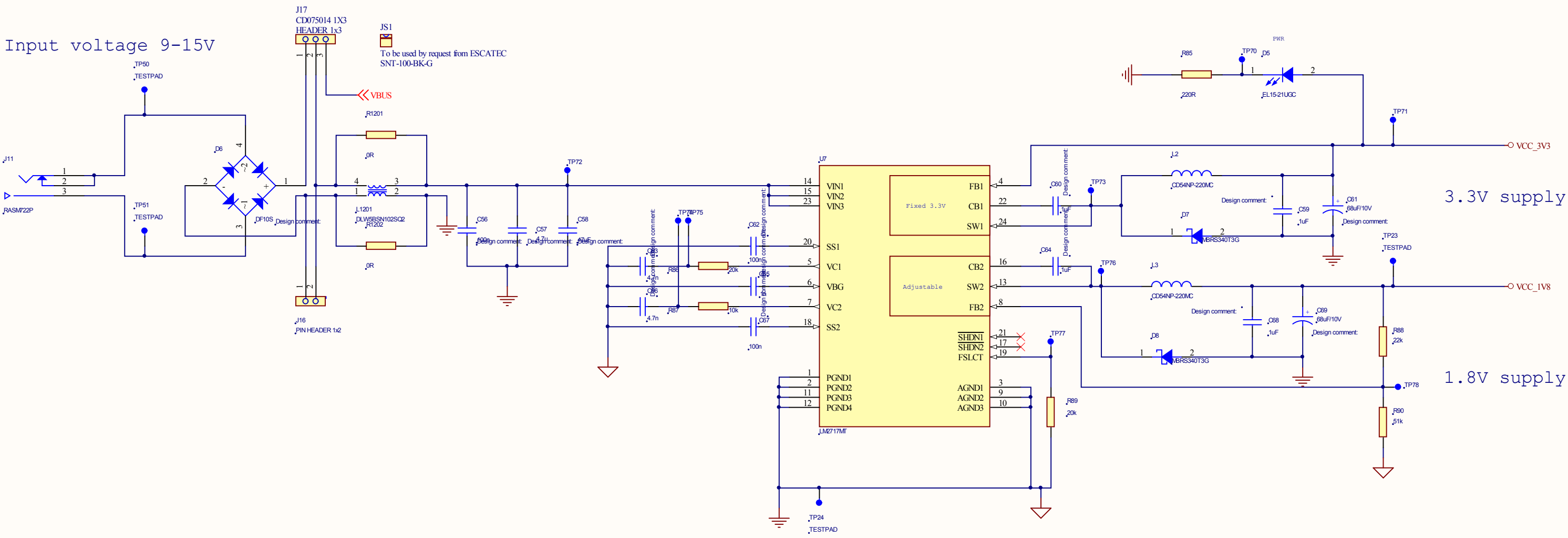
<Core Design>

ATMEL Norway AS  
Vestre Rosten 79  
N-7075 TILLER  
Norway



Title	Non Electrical	Rev	
Size	Document Number	Rev	
A	.	PE3	

Input voltage 9-15V



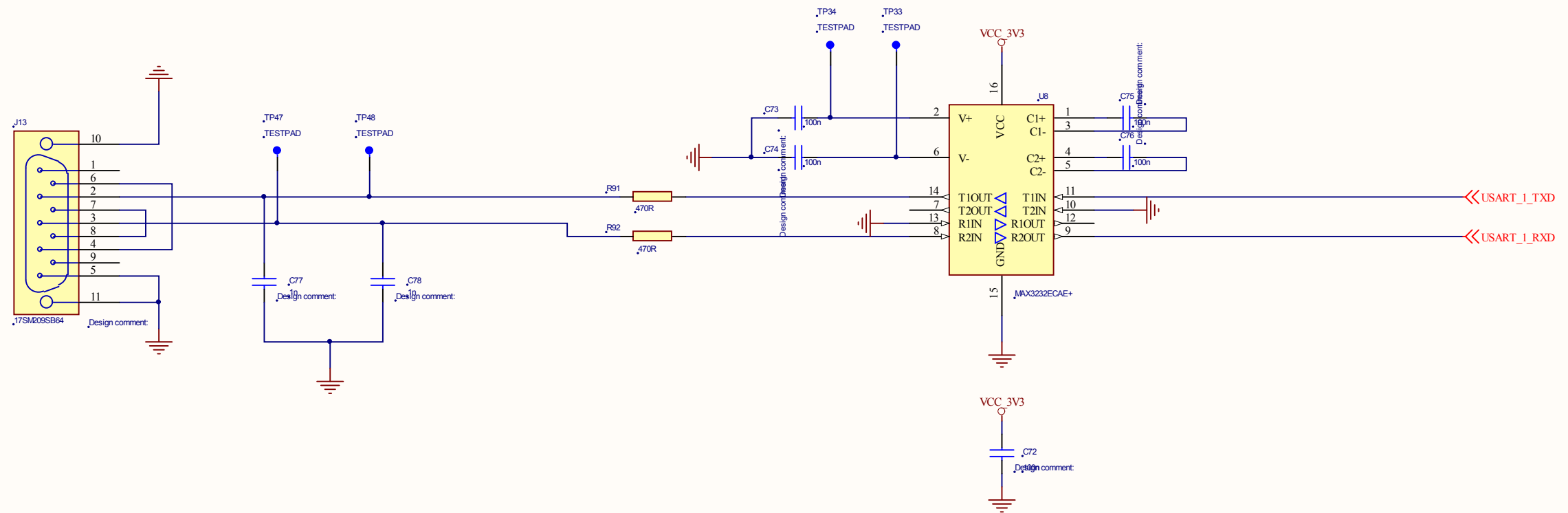
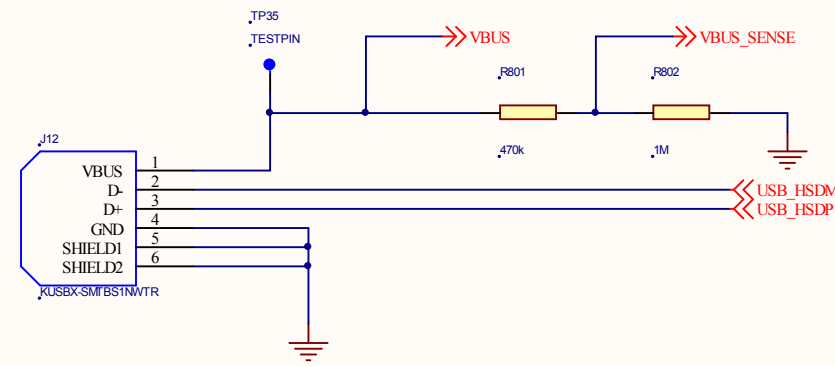
3.3V supply

1.8V supply



# RS-232 / USB

Divider makes VBUS (4.5-5.5) into 2.79-3.41



<Core Design>

ATMEL Norway AS  
Vestre Rosten 79  
N-7075 TILLER  
Norway

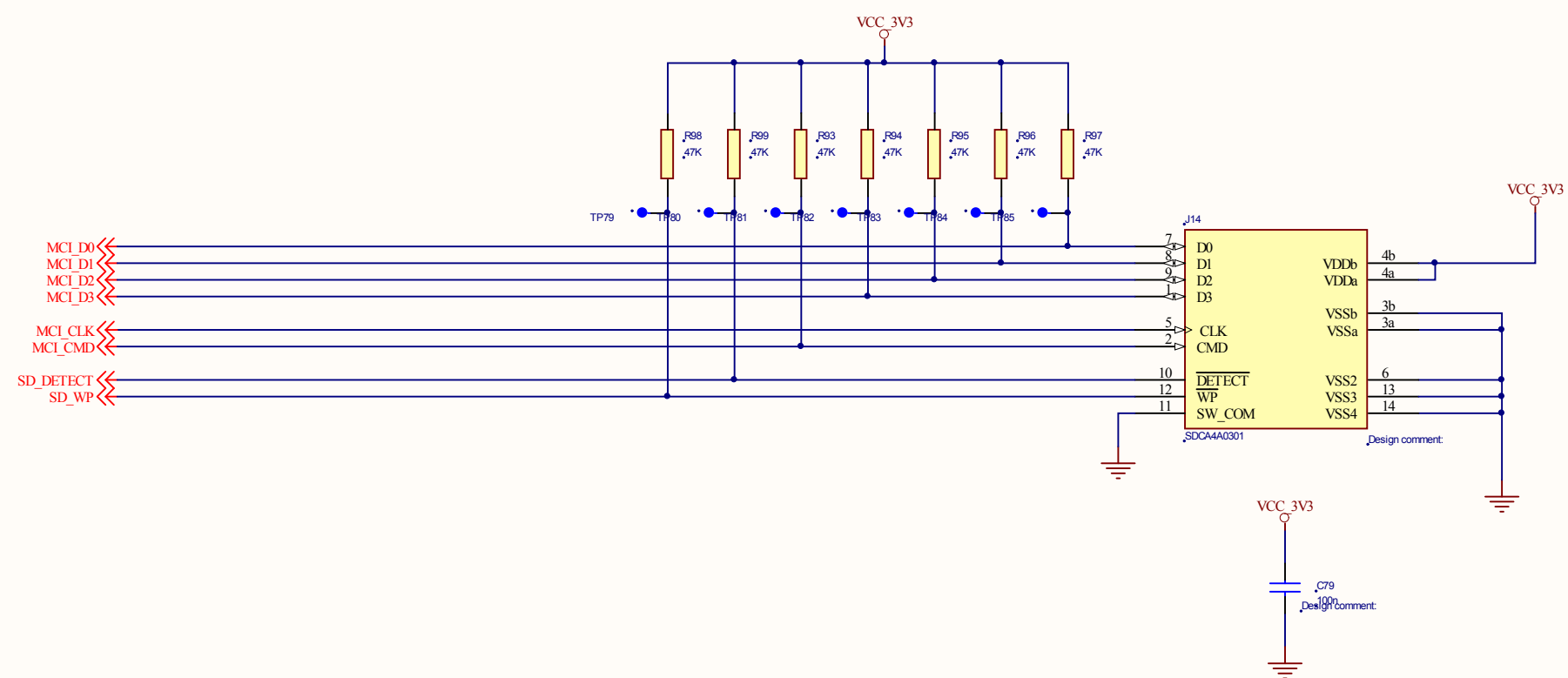


Title RS-232/USB

Size A Document Number

Rev PE3

# SD/MMC



NGM100

ATMEL Norway AS Vestre Rosten 79 N-7075 TILLER Norway		
Title	_SDMMC	
Size	A	Rev
Document Number	.	PE3

NOTE: The SDRAM are possible to update with larger memories in the future within the same footprint.

128MB

