

- Universal Input (85 - 265VAC)
- Power Factor Corrected
- Convection Cooled
- 5 year warranty
- Compact Design

## Key Market Segments & Applications

- Factory Automation
- Test & Measurement
- Light Industrial Equipment

## ZWS-BAF Series

50W to 150W Single Output Power Supplies,  
Low Cost, Worldwide Use

### ZWS-BAF Features and Benefits

Features	Benefits
<ul style="list-style-type: none"> <li>• Convection Cooled</li> <li>• 5 Year Warranty</li> <li>• Power Factor Corrected</li> </ul>	<ul style="list-style-type: none"> <li>• Better Field Reliability</li> <li>• Lower Cost of Ownership</li> <li>• Supports Global Use</li> </ul>

Specifications		ZWS50BAF	ZWS75BAF	ZWS100BAF	ZWS150BAF
ITEMS	MODELS				
AC Input Voltage range	-	85-265VAC (47-63Hz)			
DC Input Voltage range	-	120 - 370VDC			
Input Current (Typical) (2)	A	0.45 / 0.25	1.0 / 0.5	1.3 / 0.65	1.9 / 0.95
Inrush Current (2)	A	14 / 28 25°C ambient, cold start			
Power Factor (Active)	-	Meets EN61000-3-2 (Typically 0.98/0.93)			
Maximum Ripple and Noise	mV	3.3 & 5V: 120mV, 12 to 24V: 150mV, 48V: 200mV			
Temperature Coefficient	-	<0.02%/°C			
Overcurrent Protection (1)	-	>105% of maximum output current			
Hold Up Time (Typ) at 100VAC	ms	20ms			
Leakage Current	-	0.5mA max, 0.4mA typ at 230VAC			
Remote On / Off	-	Optional			
Operating Temperature (Convection)	-	-10 to +70°C, derate linearly to 50% load from 50 to 70°C			
Operating Temperature (Forced Air)	-	-10 to +70°C, derate linearly to 75% load from 60 to 70°C			
Storage Temperature	°C	-30 to +75°C			
Humidity (non condensing)	-	Operating: 30 - 90%RH, storage: 10 - 90%RH			
Withstand Voltage	-	I/P to Grnd 2kVAC (10mA), I/P to O/P 3kVAC (10mA), O/P to Grnd 500VAC (20mA) for 1 min.			
Isolation Resistance	-	>100MΩ at 25°C & 70%RH, Output to Ground 500VDC			
Vibration (non operating)	-	10 - 55Hz (1 minute sweep), 19.6m/s <sup>2</sup> constant X, Y, Z 1 hour			
Shock	-	< 196.1 m/s <sup>2</sup>			
Safety Agency Certifications	-	UL60950-1, CSA60950-1, EN60950-1, EN50178 (OV II), CE Mark			
Conducted & Radiated EMI	-	EN55011/EN55022-B, FCC-B, VCCI-B			
Immunity	-	IEC61000-4-2 (lv 2,3), -3 (lv3), -4 (lv 3), 50/75W: -5 (lv4); 100/150W: -5 (lv 3,4), -6 (lv 3), -8 (lv 4), -11			
Weight (Typ)	g	165	230	290	390
Size (W x H x D)	mm	50 x 26 x 132	50 x 33 x 150	62 x 33 x 155	75 x 37 x 160
Warranty	yrs	5			

**Notes:**

(1) Avoid prolonged operation in overload (2) 100 / 200VAC Input

Model Selector

Model	Output Voltage	Output Adjust Range (V)	Max Current (A)	Max Output Power(W)	Efficiency (typ) %	Load Reg (mV)	Line Reg (mV)	OVP (V)
ZWS50BAF-3	3.3V	2.97-3.63	10	33	79	40	20	3.8-4.95
ZWS50BAF-5	5V	4.5-5.5	10	50	84	40	20	5.75-7
ZWS50BAF-12	12V	10.8-13.2	4.3	51.6	85	96	48	13.8-16.2
ZWS50BAF-15	15V	13.5-16.5	3.5	52.5	86	120	60	17.3-20.3
ZWS50BAF-24	24V	21.6-26.4	2.1	50.4	87	150	96	27.6-32.4
ZWS50BAF-48	48V	43.2-52.8	1.1	52.8	87	240	192	55.2-64.8
ZWS75BAF-3	3.3V	2.97-3.63	15	49.5	79	40	20	3.8-4.95
ZWS75BAF-5	5V	4.5-5.5	15	75	84	40	20	5.75-7
ZWS75BAF-12	12V	10.8-13.2	6.3	75	85	96	48	13.8-16.2
ZWS75BAF-15	15V	13.5-16.5	5	75	86	120	60	17.3-20.3
ZWS75BAF-24	24V	21.6-26.4	3.2	76.8	87	150	96	27.6-32.4
ZWS75BAF-48	48V	43.2-52.8	1.6	76.8	88	240	192	55.2-64.8
ZWS100BAF-3	3.3V	2.97-3.63	20	66	84	40	20	3.79-4.95
ZWS100BAF-5	5V	4.5-5.5	20	100	86	40	20	5.75-7
ZWS100BAF-12	12V	10.8-13.2	8.5	102	88	96	48	13.8-16.2
ZWS100BAF-15	15V	13.5-16.5	6.7	100.5	88	120	60	17.3-20.3
ZWS100BAF-24	24V	21.6-26.4	4.3	103.2	89	150	96	27.6-32.4
ZWS100BAF-48	48V	39.5-52.8	2.1	100.8	90	240	192	55.2-64.8
ZWS150BAF-3	3.3V	2.97-3.63	30	99	84	40	20	3.79-4.95
ZWS150BAF-5	5V	4.5-5.5	30	150	87	40	20	5.75-7
ZWS150BAF-12	12V	10.8-13.2	12.5	150	88	96	48	13.8-16.2
ZWS150BAF-15	15V	13.5-16.5	10	150	89	120	60	17.3-20.3
ZWS150BAF-24	24V	21.6-26.4	6.3	151.2	90	150	96	27.6-32.4
ZWS150BAF-48	48V	39.5-52.8	3.2	153.6	91	240	192	55.2-64.8

Note: ZWS50 & 75 available Q1 2011

Outline Drawing ZWS50BAF

LEAD CUT LESS THAN 3mm

NAME PLATE

SEE NOTE B

SCALE FOR NAME PLATE : 2/1

CONNECTIONS USED:

PART DESCRIPTION	PART NAME	MANUFACT.	QTY
PIN HEADER (INPUT SIDE CN1)	B3P5-VH	J.S.T.	1
PIN HEADER (OUTPUT SIDE CN51)	B4P-VH	J.S.T.	1

\*OUTPUT CURRENT OF EACH CONNECTOR PIN MUST BE LESS THAN 5A.

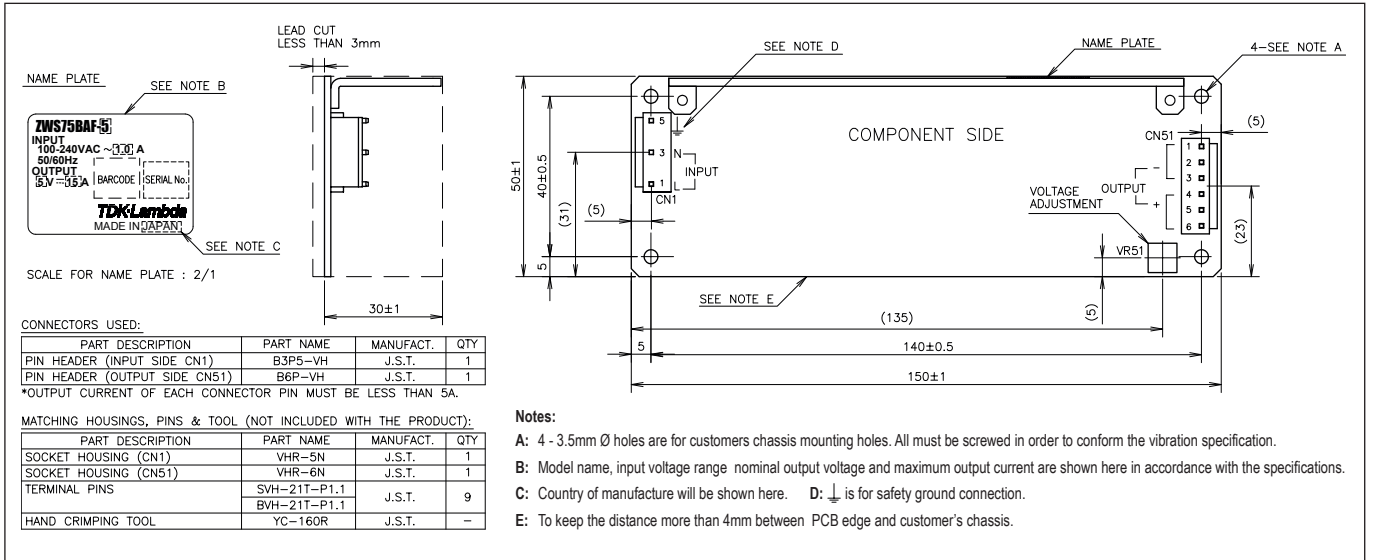
MATCHING HOUSINGS, PINS & TOOL (NOT INCLUDED WITH THE PRODUCT):

PART DESCRIPTION	PART NAME	MANUFACT.	QTY
SOCKET HOUSING (CN1)	VHR-5N	J.S.T.	1
SOCKET HOUSING (CN51)	VHR-4N	J.S.T.	1
TERMINAL PINS	SVH-21T-P1.1	J.S.T.	7
	BVH-21T-P1.1	J.S.T.	1
HAND CRIMPING TOOL	YC-160R	J.S.T.	-

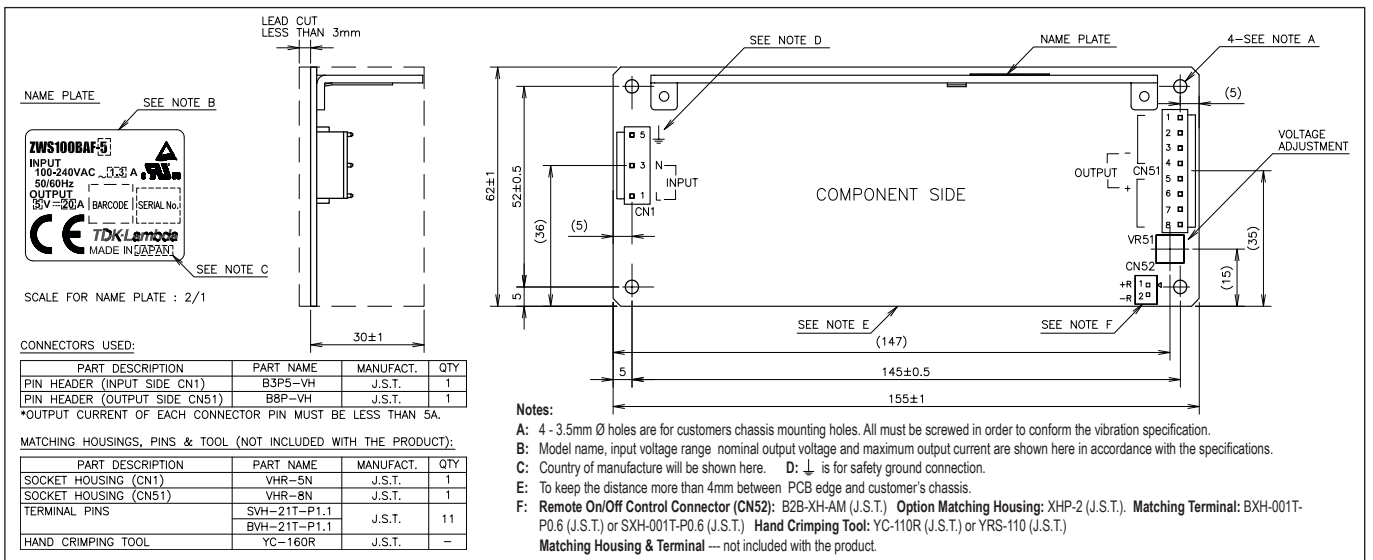
Notes:

- A: 4 - 3.5mm Ø holes are for customers chassis mounting holes. All must be screwed in order to conform the vibration specification.
- B: Model name, input voltage range, nominal output voltage and maximum output current are shown here in accordance with the specifications.
- C: Country of manufacture will be shown here.
- D: ⊥ is for safety ground connection.
- E: To keep the distance more than 4mm between PCB edge and customer's chassis.

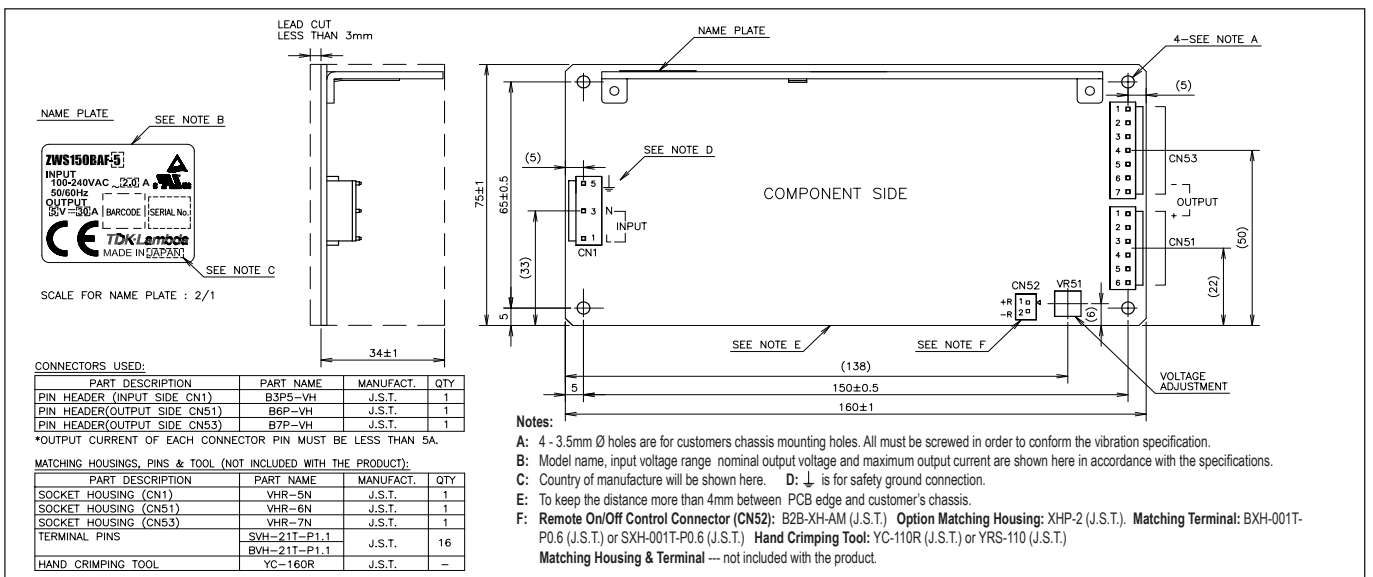
## Outline Drawing ZWS75BAF



## Outline Drawing ZWS100BAF



## Outline Drawing ZWS150BAF



**TDK-LAMBDA EMEA**

[www.emea.tdk-lambda.com](http://www.emea.tdk-lambda.com)



**TDK-Lambda France SAS**

Route de Grivery  
ZAC des Delaches  
CS 41077  
91978 Courtaboeuf Cedex  
France  
Tel: +33 1 60 12 71 65  
Fax: +33 1 60 12 71 66  
[france@fr.tdk-lambda.com](mailto:france@fr.tdk-lambda.com)  
[www.fr.tdk-lambda.com](http://www.fr.tdk-lambda.com)



**Italy Sales Office**  
Via dei Lavoratori 128/130  
20092 Cinisello Balsamo (MI)  
Italy  
Tel: +39 02 61 29 38 63  
Fax: +39 02 61 29 09 00  
[info.italia@it.tdk-lambda.com](mailto:info.italia@it.tdk-lambda.com)  
[www.it.tdk-lambda.com](http://www.it.tdk-lambda.com)



**TDK-Lambda Germany GmbH**

Karl-Bold-Strasse 40  
77855 Achern  
Germany  
Tel: +49 7841 666 0  
Fax: +49 7841 5000  
[info.germany@de.tdk-lambda.com](mailto:info.germany@de.tdk-lambda.com)  
[www.de.tdk-lambda.com](http://www.de.tdk-lambda.com)



**Austria Sales Office**  
Aredstrasse 22  
2544 Leobersdorf  
Austria  
Tel: +43 2256 655 84  
Fax: +43 2256 645 12  
[info.germany@de.tdk-lambda.com](mailto:info.germany@de.tdk-lambda.com)  
[www.de.tdk-lambda.com](http://www.de.tdk-lambda.com)



**TDK-Lambda UK Ltd.**

Kingsley Avenue  
Ilfracombe  
Devon EX34 8ES  
United Kingdom  
Tel: +44 (0) 12 71 85 66 66  
Fax: +44 (0) 12 71 86 48 94  
[powersolutions@uk.tdk-lambda.com](mailto:powersolutions@uk.tdk-lambda.com)  
[www.uk.tdk-lambda.com](http://www.uk.tdk-lambda.com)



**Nemic Lambda Ltd.**

Kibbutz  
Givat Hashlosha 48800  
Israel  
Tel: +9 723 902 4333  
Fax: +9 723 902 4777  
[info@nemic.co.il](mailto:info@nemic.co.il)  
[www.nemic.co.il](http://www.nemic.co.il)



**Russia**

Technical Support:  
St Petersburg  
Tel: +7 (812) 6580463  
Sales:  
Moscow  
Tel: +7 (499) 7557732  
[info@tdk-lambda.ru](mailto:info@tdk-lambda.ru)  
[www.tdk-lambda.ru](http://www.tdk-lambda.ru)

**LOCAL DISTRIBUTION**

