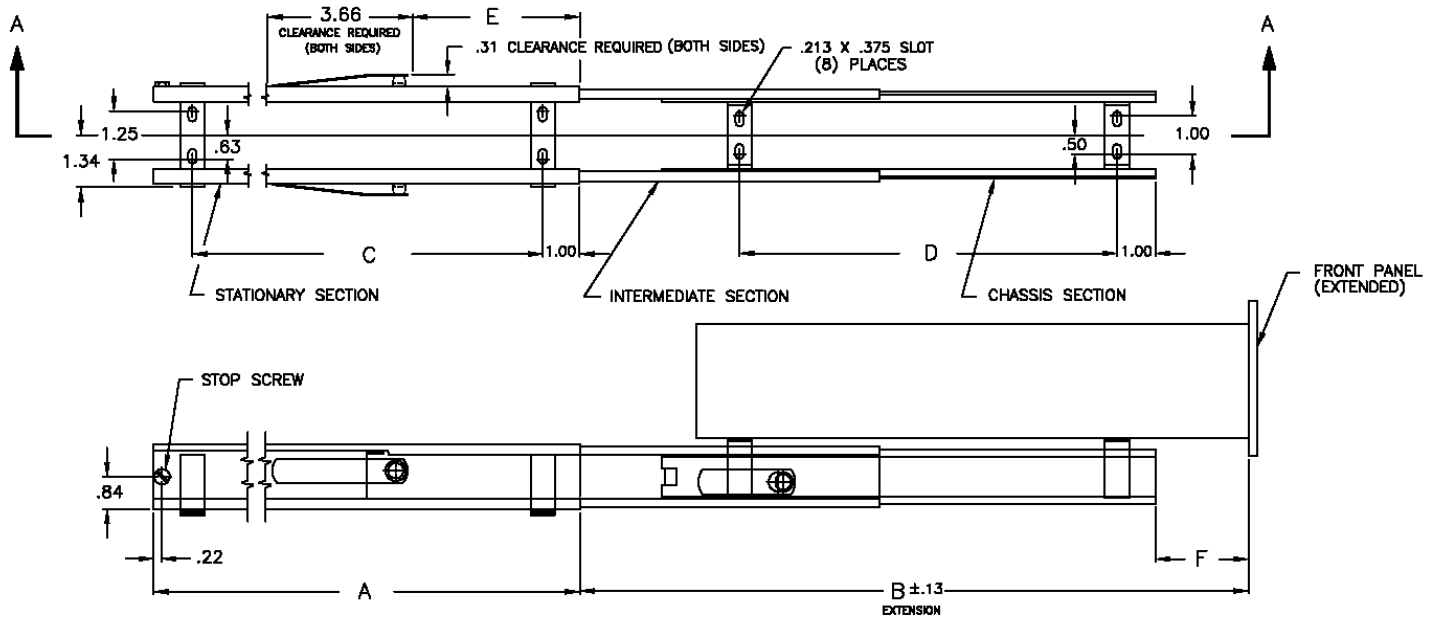
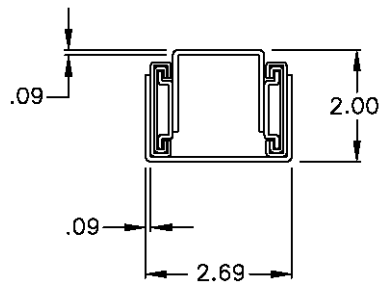


## Solid Bearing Bottom Mount Slide For Tension Or Compression Loading



SECTION A-A



**TO ORDER, SPECIFY**  
**B-200 — XX**  
**For Automatic Release**  
**B-300 — XX**

Catalog Number	A	B	C	D	E	F	Load Capacity
B-200-10	10.0	11.0	8.0	5.63	2.31	0.13	150 LBS.
B-200-12	12.0	13.0	10.0	5.63	2.31	2.13	150 LBS.
B-200-14	14.0	15.0	12.0	9.63	4.31	0.13	150 LBS.
B-200-16	16.0	17.0	14.0	9.63	4.31	2.13	150 LBS.
B-200-18	18.0	19.0	16.0	9.63	4.31	4.13	150 LBS.
B-200-20	20.0	21.0	18.0	15.63	7.31	0.13	115 LBS.
B-200-22	22.0	23.0	20.0	15.63	7.31	2.13	115 LBS.
B-200-24	24.0	25.0	22.0	15.63	7.31	4.13	115 LBS.
B-200-26	26.0	27.0	24.0	21.63	10.31	0.13	90 LBS.
B-200-28	28.0	29.0	26.0	21.63	10.31	2.13	90 LBS.
B-200-30	30.0	31.0	28.0	21.63	10.31	4.13	90 LBS.

### Notes

- Slides are sold as non-handed items.
- Finish: All standard slides are coated with Poxylube™ dry film lubricant.
- All standard slides are designed to lock in the extended position. If this feature is not desirable, order model B-300 for automatic release.
- Standard hardware packages include all hardware necessary to mount your Chassis Trak® slides.
- All sliding members of this slide are made from cold rolled steel.
- All Chassis Trak® solid bearing slides are supplied with a quick disconnect feature. This permits the entire chassis to be easily removed and replaced.
- Optional mounting patterns, slide lengths and extensions are available.
- Load capacity is based on one slide at full extension with the load (center of gravity) at the midpoint of the slide (chassis section). This capacity has a 100% static (non-moving) load safety factor at full extension. It is not intended for operation with loads exceeding specified load capacity. For increased load capacity, multiply the number of slides required for the application.