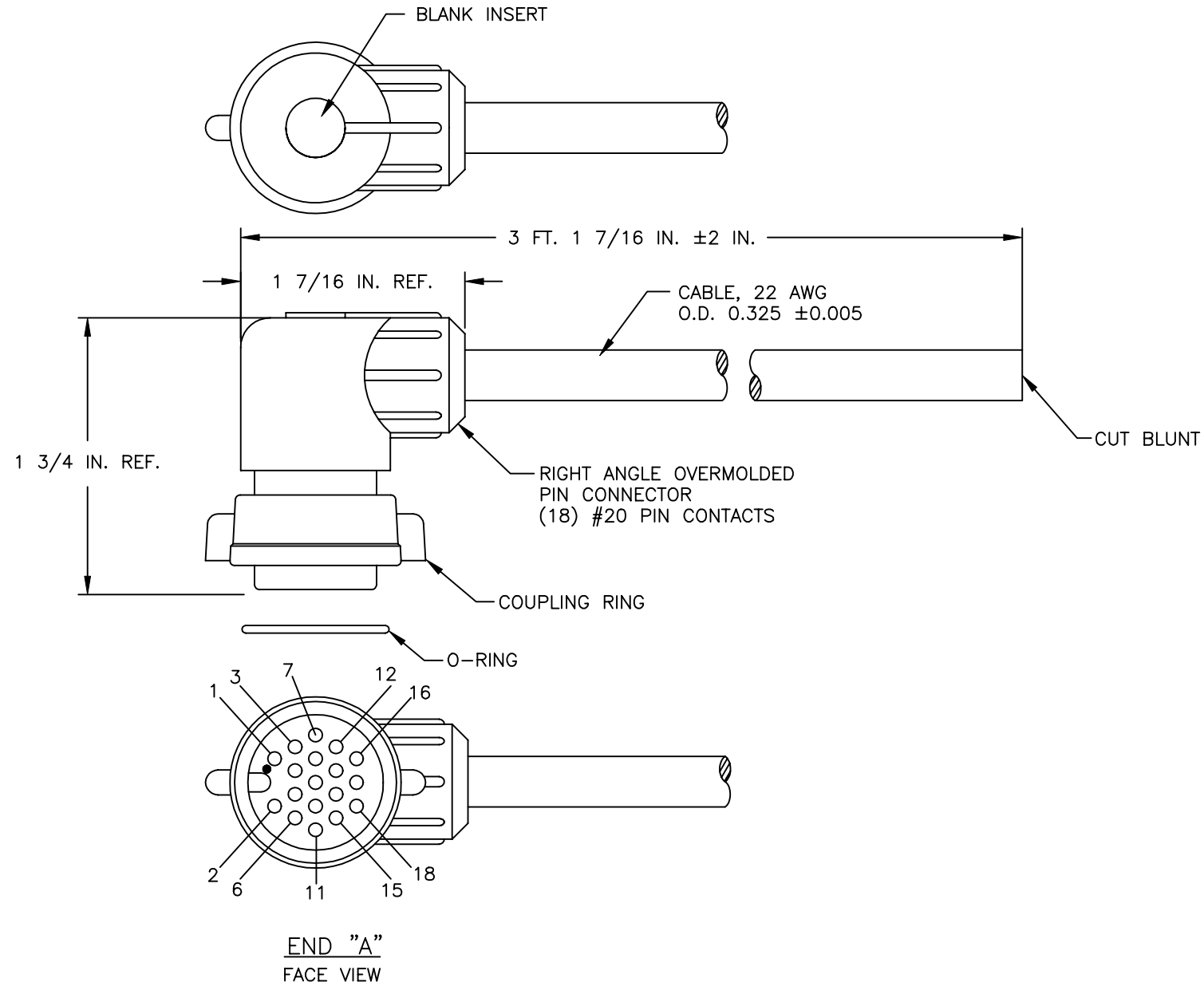


- NOTES:
 1. FINISHED PRODUCT TO BE COILED
 2. CUSTOMER PART NO.: N/A, REV. N/A
 3. OVERMOLD BOOT MATERIAL POLYPROPYLENE (RES-07)



CUSTOMER APPROVAL

CHECKED BY: _____

APPROVED BY: _____

DATE: _____

B	AN	09-26-05	REMOVED "CXA" INSERT ON OVERMOLD PER ECR 5902
A1	AL	04-06-99	UPDATED DRAWING FOR MANUFACTURING
A	AL	03-22-99	CREATED DRAWING PER DOR 99-4269KZ
REV.	INIT.	DATE	DESCRIPTION
ALL INFORMATION ILLUSTRATED IS THE PROPERTY OF "CONKALL CORPORATION." UNAUTHORIZED DUPLICATION OR DISTRIBUTION OF THIS DOCUMENT IS PROHIBITED.			
ALL UNITS ARE IN FEET, INCHES, FRACTION OF INCHES AND DECIMALS.		UNLESS OTHERWISE SPECIFIED TOLERANCES: 3 PLACE DECIMALS ±.005 ANGLES ±1° FRACTIONS ±1/16	
ORG. DRAWN BY: AL DATE: 03-22-99		CHECKED BY: _____ APPROVED BY: _____	
SCALE	SIZE	SHEET	
NTS	B	1 OF 1	
FILE:	DIRECTORY:	PART NUMBER: T3439	
T3439	CADWG	REV. B	



601 E. WILDWOOD VILLA PARK, IL 60181
 TITLE: CABLE ASSEMBLY
 MAXI-CON-X
 (18) #20 PIN CONTACTS
 CUSTOMER: TAYLOR MACHINE

WIRE COLOR CODE

POS #1	POS #2	POS #3	POS #4	POS #5	POS #6	POS #7	POS #8	POS #9
WHT/BLK	RED/BLK	GRN/BLK	ORG/BLK	BLU/BLK	BLK/WHT	RED/WHT	GRN/WHT	BLU/WHT
POS#10	POS#11	POS#12	POS#13	POS#14	POS#15	POS#16	POS#17	POS#18
BLK/RED	WHT/RED	ORG/RED	BLK	WHT	RED	GRN	ORG	BLU