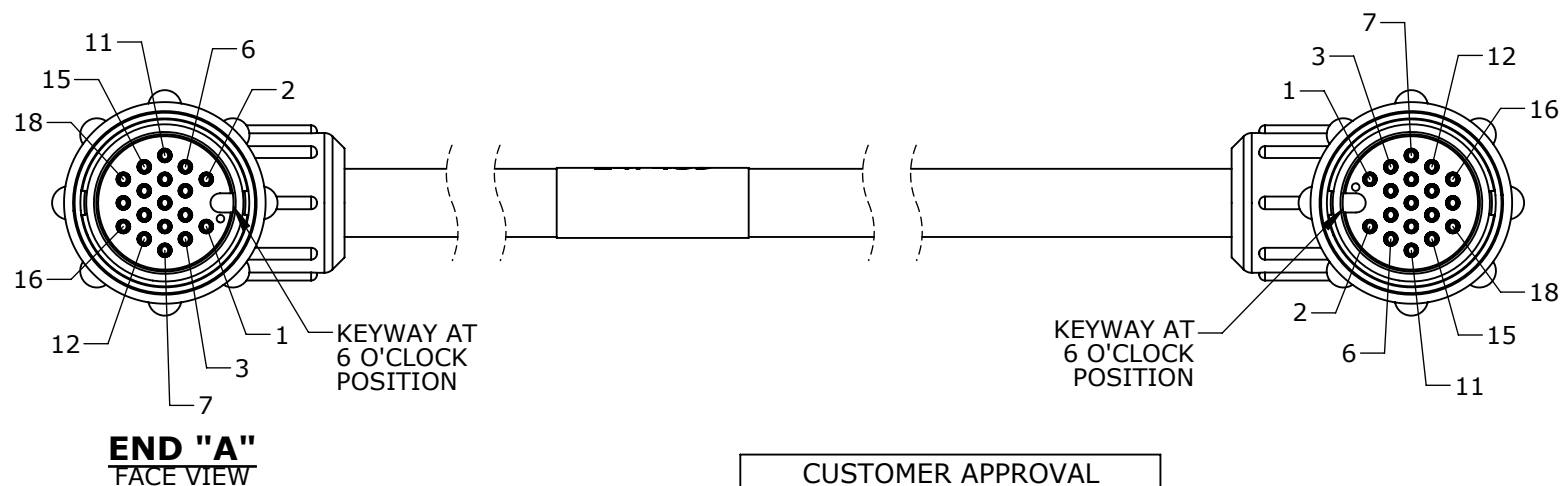
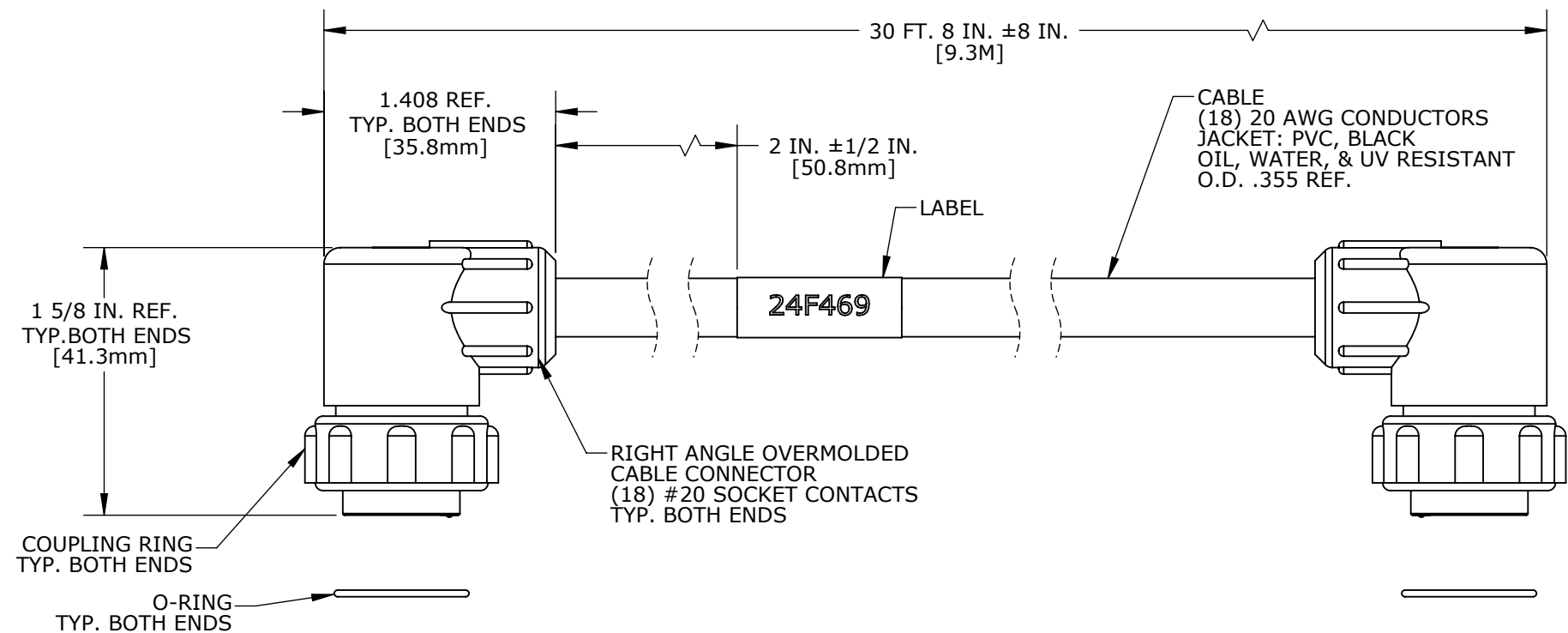


CUSTOMER PRINT

PART NUMBER: N2512R

NOTE:

1. FINISHED PRODUCT TO BE COILED
2. CUSTOMER PART/DRAWING NO.: 24F469, REV.: C
3. OVERMOLD BOOT MATERIAL: PVC, NATURAL WITH BLACK COLORANT
4. OVERMOLD TO BE BONDED TO CABLE JACKET



CUSTOMER APPROVAL

THIS DOCUMENT CONTAINS CONFIDENTIAL INFORMATION PROPRIETARY TO CONXALL CORPORATION. ANY REPRODUCTION, DISCLOSURE, OR USE OF THIS DOCUMENT /INFORMATION IS EXPRESSLY PROHIBITED UNLESS AUTHORIZED IN WRITING BY CONXALL CORPORATION.

APPROVED BY: _____
DATE: _____

REV.	INIT.	DATE	DESCRIPTION
A	BZ	11-16-10	KEYWAYS WERE AT 12 O'CLOCK POSITION, CUST. REV WAS "N/A" PER CUST. REQUEST
		11-08-10	LABEL TEXT WAS "2531-3" PER CUST. REQUEST
		10-22-10	DRAWING CREATED PER DOR 10-2531JS

ALL INFORMATION ILLUSTRATED IS THE PROPERTY OF "CONXALL CORPORATION." UNAUTHORIZED DUPLICATION OR DISTRIBUTION OF THIS DOCUMENT IS PROHIBITED.		ORIG. DRAWN BY: BZ	DATE: 10-22-10	<p>601 E. WILDWOOD VILLA PARK, IL 60181</p>
ALL UNITS ARE IN FEET, INCHES, FRACTION OF INCHES AND DECIMALS.		CHECKED BY:	APPROVED BY:	
SCALE: NTS	SIZE: B	SHEET: 1 OF 1	CUSTOMER: NEWARK	PART NUMBER: N2512R
FILE: N2512R	DIRECTORY: SLW	REV: A		

COLOR CODE TYP. BOTH ENDS

WIRE COLOR CODE								
POS. 1	POS. 2	POS. 3	POS. 4	POS. 5	POS. 6	POS. 7	POS. 8	POS. 9
RED	WHT	PUR	BLU	ORG	GRY	GRN	PNK	BRN
POS.10	POS.11	POS.12	POS.13	POS.14	POS.15	POS.16	POS.17	POS.18
YEL	BLK	TAN	WHT/GRN	WHT/ORG	WHT/RED	WHT/BLU	WHT/BRN	WHT/YEL

DIMENSIONS IN BRACKETS [] ARE METRIC

RoHS COMPLIANT