

# TECHNICAL CHARACTERISTICS

## SPECIFICATION

- >Rating: 50mA, 12VDC
- >Contact Resistance:
  - Initial: 100mOHM max.
  - After Life Test: 20HM max.
- >Insulation Resistance: min. 100MOHM at 500VDC
- >Dielectric Strength: 250VAC for 1 minute
- >Stroke: 0.25 +0.2mm / - 0.1mm

## MATERIAL

- >Cover: Carbon Steel Plate
- >Stem: LCP UL 94V-0
- >Frame: LCP UL 94V-0, color Black
- >Contact: Stainless Steel with silver cladding
- >Terminal: Copper alloy with tin plating

## SOLDERING INFORMATION

- >Terminal in THT version
- >Wave soldering 260°C 10sec. max
- >Hand soldering under 350°C for 3 sec. max

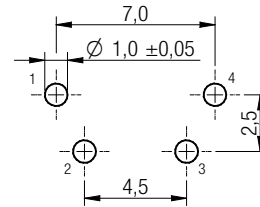
## ENVIRONMENTAL

- >Storage condition: -40°C ~ +85°C
- >Operation condition: -40°C ~ +85°C
- >Compliance: Lead Free, ROHS, Reach

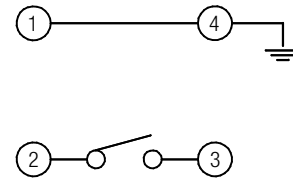
## PACKAGING INFORMATION

>Bulk

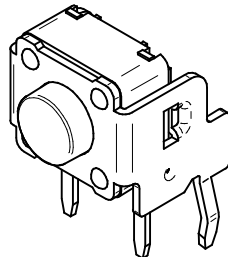
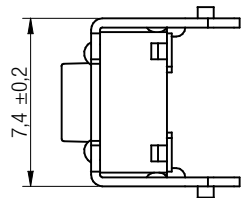
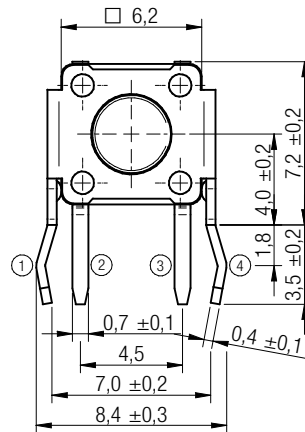
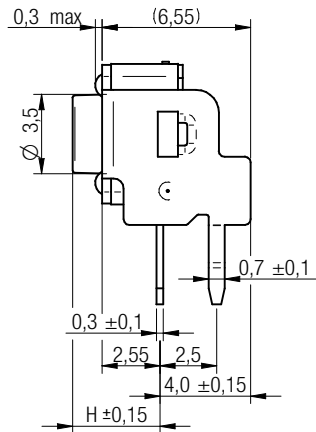
PN	Force	Color of Stem	Life cycle	-031	-038
				H	H
431 256 xxx 716	160g ± 50gf	Black	200.000	3.15	3.85
431 256 xxx 726	260g ± 50gf	White	200.000	3.15	3.85
431 256 xxx 736	360g ± 80gf	Salmon	200.000	3.15	3.85



P.C.B. MOUNTING PLAN



SCHEMATIC



Scale - 3:1

		Projection		GENERAL TOLERANCE .x = +/- 0,2 .xx = +/- 0,15		Basic material		
				Date	Name	DESCRIPTION		
				Drawn	11-05-17	SwTact		
				Checked		WS-TST 6x6mm right angle Tact Switch, THT version		
				Würth Elektronik eiCan		Scale	3:1	
						Position		
						Drawing.- No. 4312x6xxx7x6		
REV	FILE	DATE	BY	EDV NO	4312x6xxx7x6.dft	SIZE A4		
							System Solid Edge V20	