

max. 28 m³/h

DC centrifugal fans

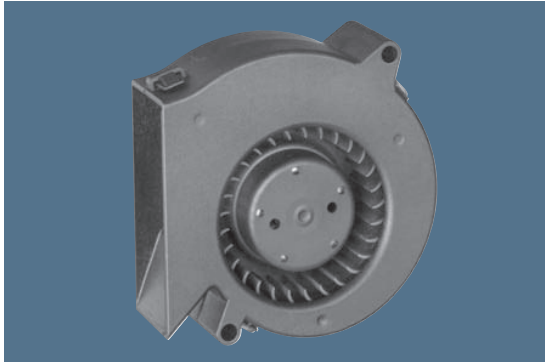
Series RL 48 76 x 76 x 27 mm

Highlights:

- Pressure-optimised blower.
- Noise-optimised air outlet in scroll housing.
- Forward curved impeller.

General characteristics:

- Fibreglass-reinforced plastic scroll housing and impeller.
- Fully integrated electronic commutation.
- Protected against reverse polarity and locking.
- Direction of air flow: axial air intake, centrifugal air exhaust out of the outlet.
- Connection via single strands AWG 26, TR 64. Bared and tin-plated.
- Mass: 75 g.



Nominal data	Air flow		Nominal voltage	Voltage range	Sound power level	Sinter sleeve bearings Ball bearings		Power input	Nominal speed	Temperature range	Service life L ₁₀ (40 °C) ebm-papst Standard	Service life L ₁₀ (T _{max}) ebm-papst Standard	Life expectancy L ₁₀ Δ (40 °C) see P.15	Curve	Specials
	Type	m ³ /h				CFM	VDC								
RL 48-19/12 ML	22	12,9	12	8...15	5,3	■	■	2,9	3 500	-20...+70	70 000 / 35 000	140 000	1		
RL 48-19/12	28	16,5	12	8...13,5	5,7	■	■	5,0	4 400	-20...+70	60 000 / 30 000	120 000	2	/2	
RL 48-19/14 ML	22	12,9	24	18...28	5,3	■	■	2,9	3 500	-20...+70	70 000 / 35 000	140 000	1		
RL 48-19/14	28	16,5	24	18...26,4	5,7	■	■	5,0	4 400	-20...+70	60 000 / 30 000	120 000	2	/2	

