

# Voice Modules & Accessories

- Incorporate the KRONE LSA-PLUS® IDC Technique

- Available as Backmount Frame, surface or PCB mounted variants

- Simple to install using industry standard KRONE Insertion tool

- Easy 'tee-in' and 'bi-directional' look both ways testing without disrupting wiring

- Each contact accepts up to 2 wires of the same diameter

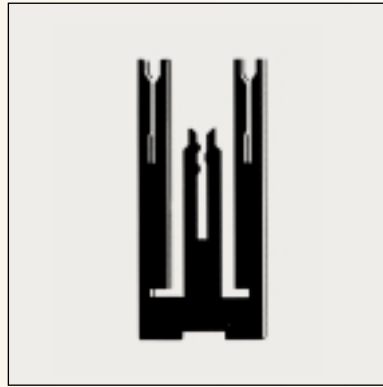
- Wide range of complementary accessories available

- Conform to OFTEL General Approval NS/G/23/L/100025

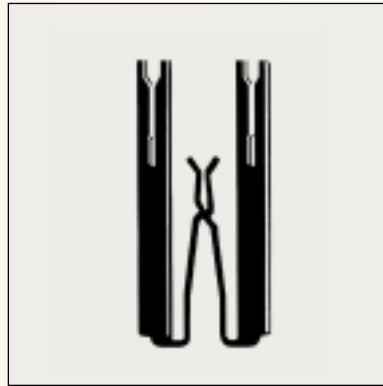
MODULES consist of two rows of contacts, one for permanent wiring, the other for jumper wires. The modules are available in four basic forms:



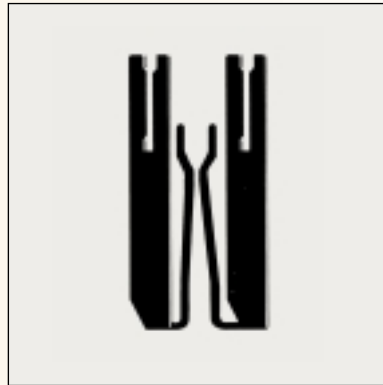
**Connection Modules** have a one piece contact providing a continuous link between permanent wiring and jumper wiring, giving provision for monitoring access and overvoltage protection.



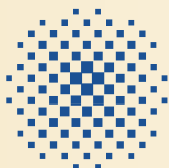
**Disconnection Modules** have two piece contacts normally closed, incorporating a disconnection facility. This gives all the features as above plus the added advantage of individual pair disconnection and four wire test access.



**Switching Modules** have two piece contacts normally open to allow connection by one of the KRONE range of 4 pole Bridging Plugs, Test Leads or Patchcords.



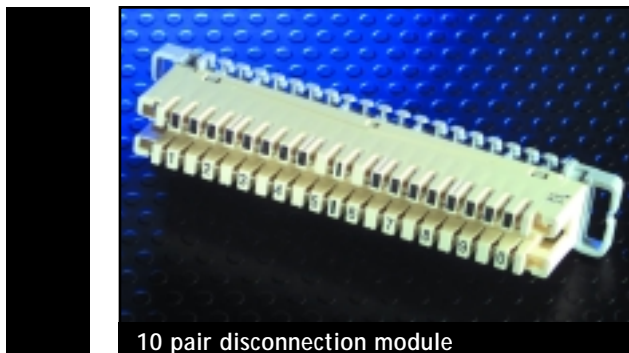
**Earthing Modules** have a one piece contact and earthing rail accommodating up to 2 identical wires per slot.



KRONE

## DISCONNECTION MODULE

10 pair LSA-PLUS® modules which contain two piece contacts normally closed. Has advantage of individual pair disconnection and four wire test access.



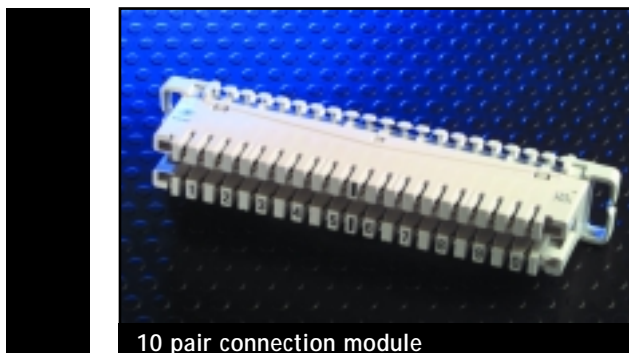
10 pair disconnection module

Dimensions are listed on page 5

Description	Pack Qty	BT Ref:	KRONE Product No
10 pair disconnection contacts, cream	10	Strips Connexion 237A	6089/1/810/00
<del>10 pair disconnection contacts, green</del>	<del>10</del>	<del></del>	<del>6089/1/811/00</del>
<del>10 pair disconnection contacts, blue</del>	<del>10</del>	<del></del>	<del>6089/1/812/00</del>

## CONNECTION MODULE

10 pair LSA-PLUS® modules which contain a one piece contact providing a continuous link between wiring.



10 pair connection module

Dimensions are listed on page 5

Description	Pack Qty	BT Ref:	KRONE Product No
10 pair connection contacts	10	Strips Connexion 237B	6089/1/820/00
<del>20 pair isolated disconnection contacts, no test access</del>	<del>10</del>	<del>Strips Connexion 237C</del>	<del>6089/1/830/00</del>

## EARTH MODULE

LSA-PLUS® modules with a one piece contact and earthing rail accommodating up to 2 identical wires per slot.



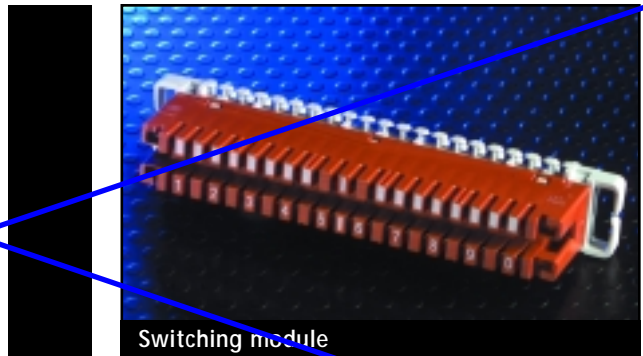
Earthing module 237D

Dimensions are listed on page 5

Description	Pack Qty	BT Ref:	KRONE Product No
76 way, earth lead and terminal ring, red	10	Strips Connexion 237D	6089/1/840/00
<del>20 way, earth lead and terminal ring, red</del>	<del>10</del>	<del>Strips Connexion 237E</del>	<del>6089/1/841/00</del>

## SWITCHING MODULE

Module remains disconnected until accessed via a patch plug or bridging plug, offers a high density data patching capability, or 20 pair connection module with tee-in access via 4 pole plug.



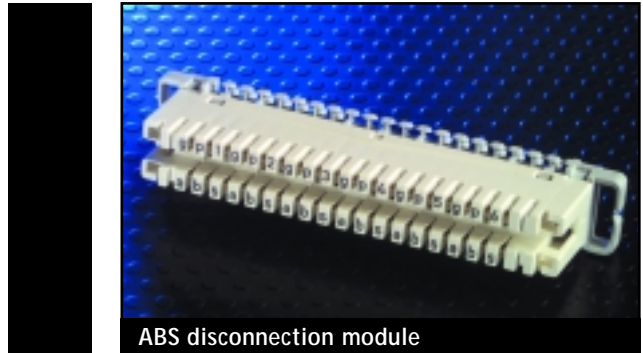
Switching module

Dimensions are listed on page 5

Description	Pack Qty	KRONE Product No
10 pair, switching module, brown	10	6089/1/851/00

## ABS DISCONNECTION MODULE

Configured in six groups of three contacts for one pair and screen, provides a means of terminating cables for continuity.



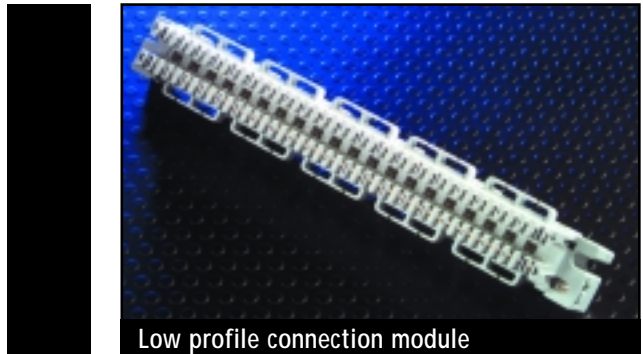
ABS disconnection module

Dimensions are listed on page 5

Description	Pack Qty	KRONE Product No
10 pair, ABS disconnection module	10	6504/1/810/00

## LOW PROFILE CONNECTION MODULE

Low profile module can be tested using 2 pole test cord.



Low profile connection module



Use 2 pole test cord (6529/1/020/01)

Description	Pack Qty	BT Ref:	KRONE Product No
10 pair, connection module, centre to centre fixing dimension 96mm, two earth contacts	10	Strips Connexion 241A	6196/1/001/11
10 pair, connection module, centre to centre fixing dimension 96mm	10	Strips Connexion 241B	6196/1/007/11
20 pair, connection module, centre to centre fixing dimension 170mm	10	Strips Connexion 242A	6196/2/002/00

## INSERTION TOOL

Tool for LSA-PLUS® IDC termination. Inserts and crops wires simultaneously. Complete with extraction tool and stop clip.

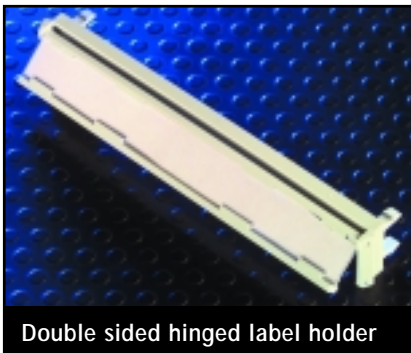


Insertion tool

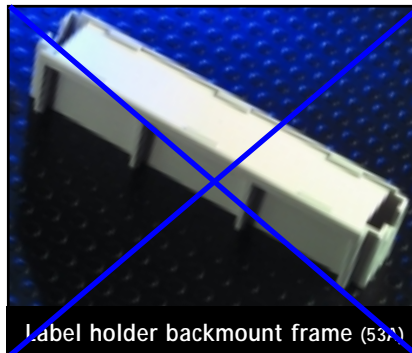
Description	Pack Qty	BT Ref:	KRONE Product No
Insertion tool	1	Inserter Wire 2A	6417/1/810/02

## 10 PAIR LABEL HOLDER AND LABELS

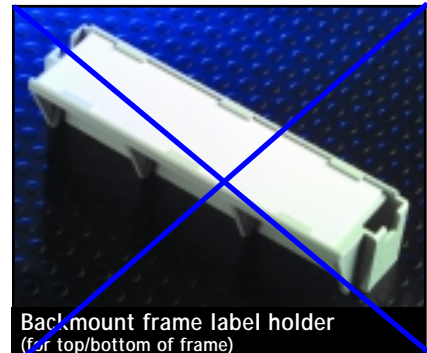
Easy identification of terminations, for mounting on a 10 pair LSA-PLUS® module. No need to remove when using test plugs or inserting jumper wires. Labels can be ordered separately.



Double sided hinged label holder



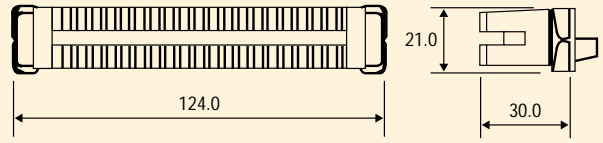
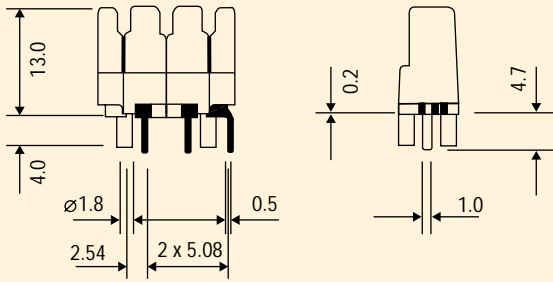
~~Label holder backmount frame (53A)~~



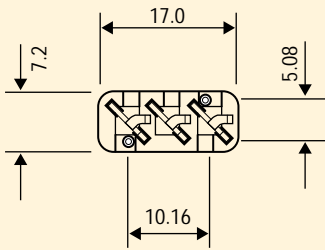
~~Backmount frame label holder  
(for top/bottom of frame)~~

Description	Pack Qty	BT Ref:	KRONE Product No
Double sided hinged label holder grey	10	Strips Designation 51A	6092/1/810/00
<del>Double sided hinged label holder green</del>	<del>10</del>	<del></del>	<del>6092/1/811/00</del>
<del>Double sided hinged label holder blue</del>	<del>10</del>	<del></del>	<del>6092/1/812/00</del>
<del>Label holder complete with label, fits on one position on backmount frame</del>	<del>10</del>	<del>Strips Designation 53A</del>	<del>6092/1/820/00</del>
<del>Label holder complete with label, fits on one position on backmount frame. Must be positioned either at top or bottom of backmount frame</del>	<del>100</del>	<del>Strips Designation 54A</del>	<del>6092/1/830/00</del>
<del>Label holder for use only with 25mm pitch backmount frames</del>	<del>10</del>	<del>Strips Designation 56A</del>	<del>6092/1/840/00</del>
<del>Blank white labels for use with label holders 6092/1/810/00 &amp; 6092/1/840/00</del>	<del>100</del>	<del></del>	<del>6534/1/001/00</del>

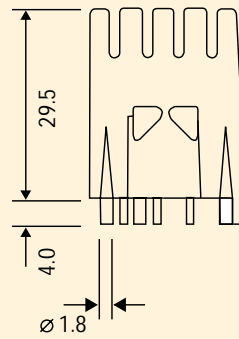
# VOICE MODULE DIMENSIONS



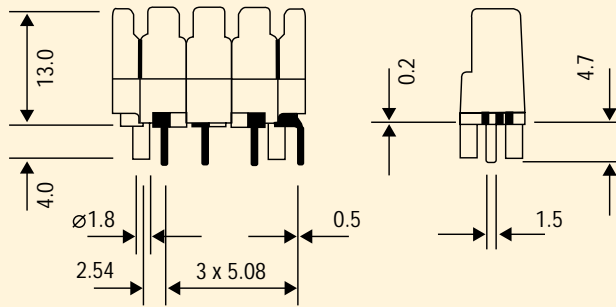
10 Pair Module



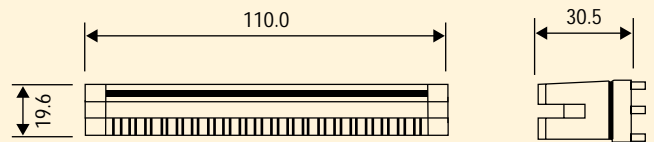
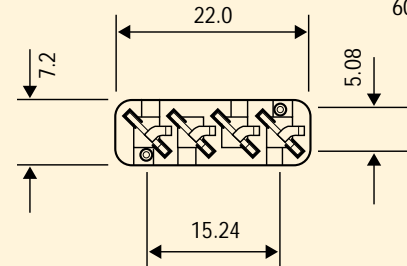
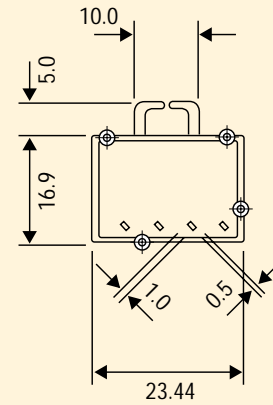
3 Way PCB  
Connection Module  
6048/1/001/03



2 Pair Disconnection Module  
6426/1/015/00



4 Way PCB  
Connection Module  
6048/1/001/04



10 Pair PCB Disconnection Module

Dimensions are in millimetres unless otherwise stated.