



The battery powered light Switch

Replaces awkward Cable Runs

Simple installation option for extra light switches

Simply Screw to the wall

Description

The RF Solutions' **SWITCHLINK** System offers a quick, simple and cost effective solution to light switching, when cabling is tricky, expensive or time consuming.

Part Number	Description
SWITCHLINK	SWITCHLINK System (Supplied Complete with Tx & Rx)

Features:

- Quick and Simple to Install
- Up to 50m Range
- High Quality **UK manufacture**
- **Outdoor** Weatherproof IP65 Receiver enclosure
- Supplied ready to operate
- Switches any load up to 1.2kW

Installation Guide

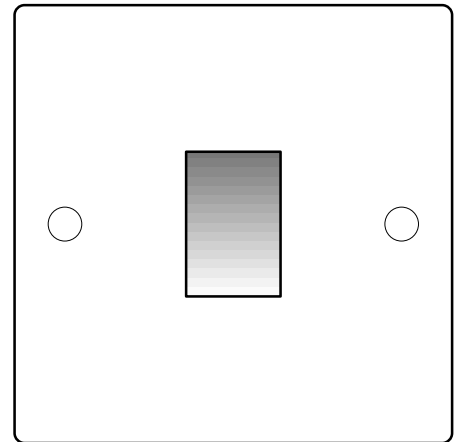
Connections

SWITCHLINK can be installed in minutes, simply wire the receiver and attach the transmitter to the wall in your chosen location.

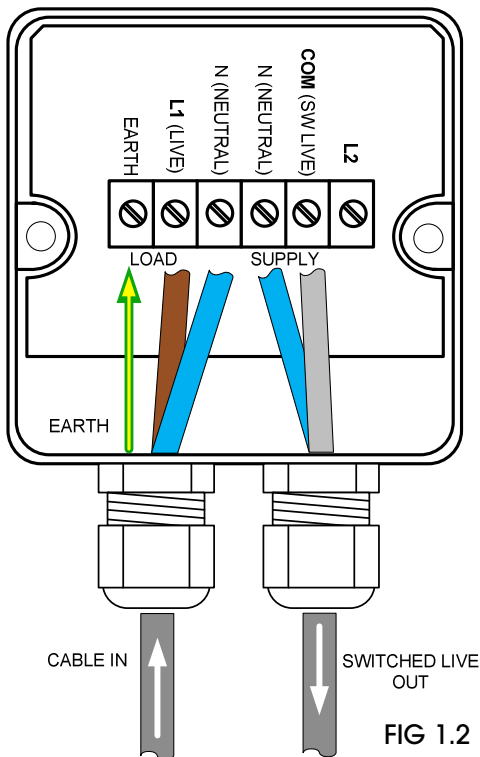
Wall Switch Transmitter:

The Wall switch transmitter is simply attached to the wall in the location required.

Wall Mounting templates are given on Page 3
AS SHOWN IN FIG 1.1



Transmitter - SWITCHLINK-TX1 FIG 1.1



Receiver - SWITCHLINK-RX

Receiver:

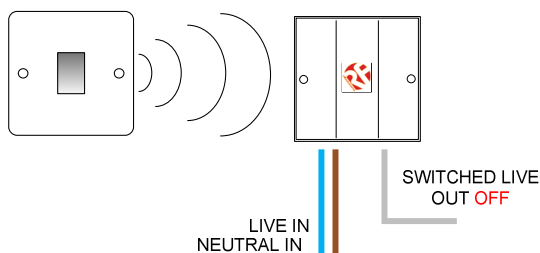
1. Connect the Supply:
LIVE, NEUTRAL and EARTH.
Connect the Live to the screw terminal marked: LIVE connect the NEUTRAL and EARTH respectively.
2. Connect the LOAD to the receiver and wire in as required.
3. In most applications the LOAD would be a \perp
Wired as shown in FIG 1.2

Important Notes:

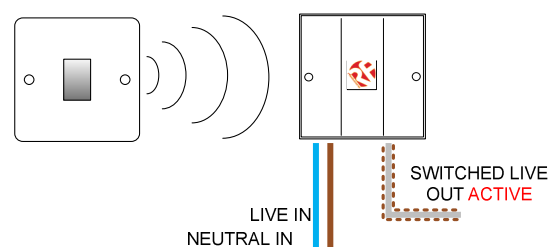
- All mains powered units must be earthed
- Hardwired units must be connected via an isolating switch
- See Safety information on page 5 before installing

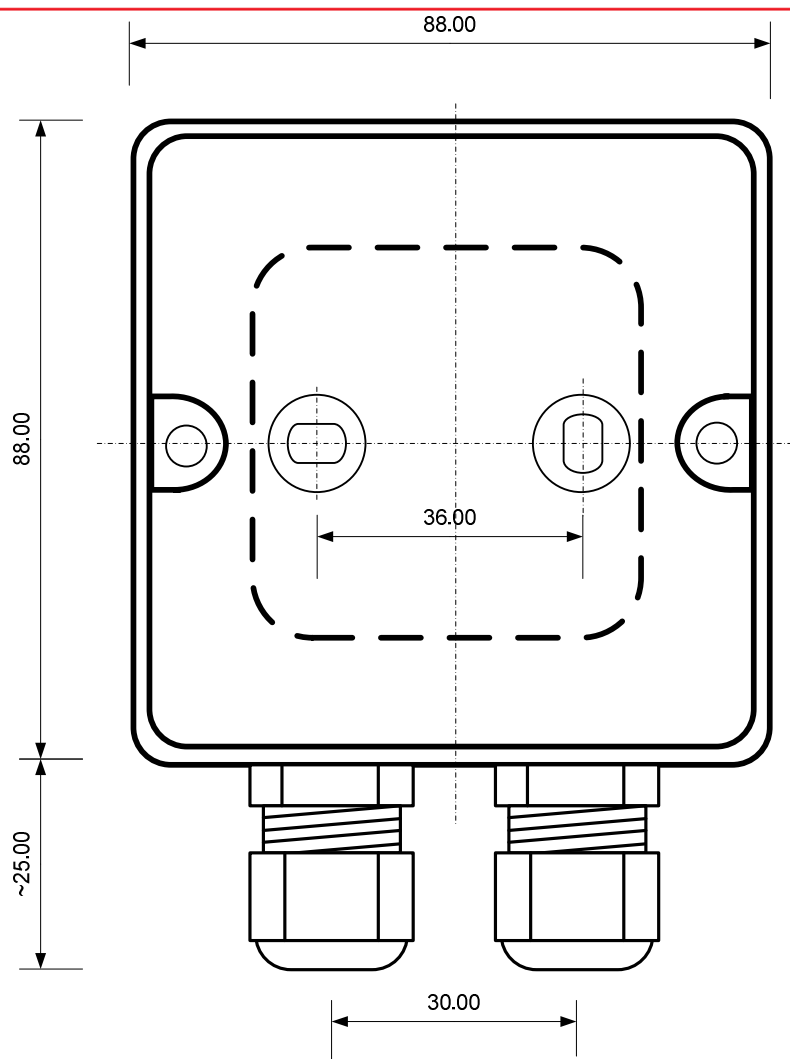
SWITCHLINK System Operation

Switch in **OFF** Position



Switch in **ON** Position

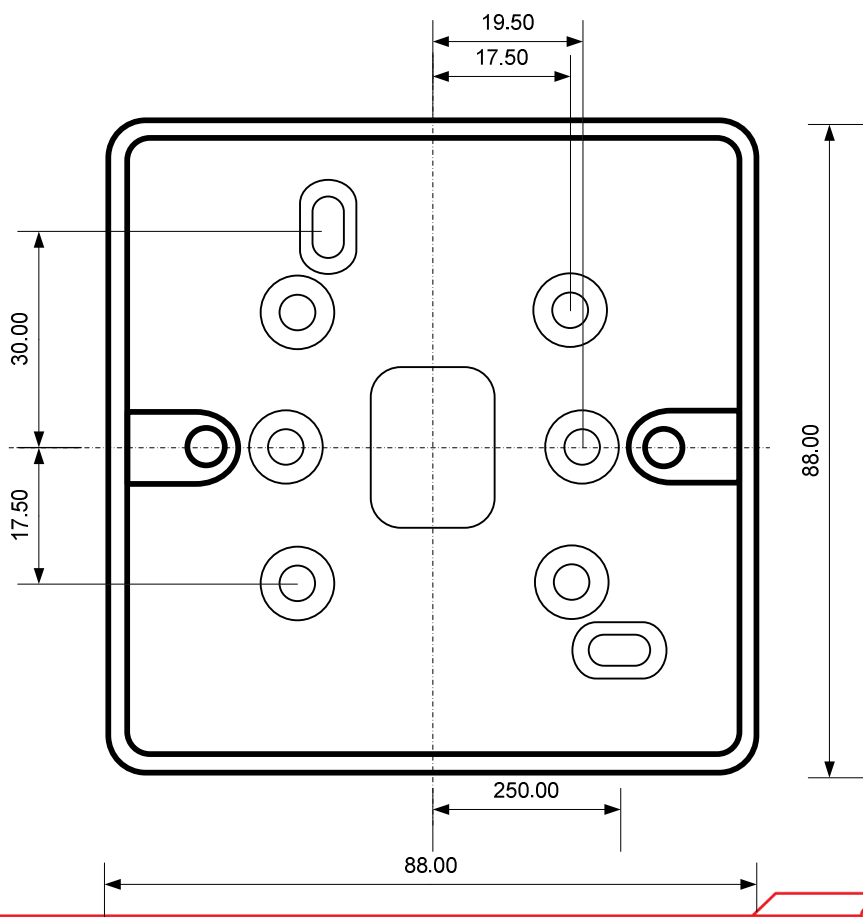




Dimensions and Wall mounting information:

SWITCHLINK is a professional use product and should only be installed by a competent person.

FIG 1.3 Wall Mounting Templates
Scale 1:1
All dimensions in mm



Technical Information

SWITCHLINK Transmitter

Battery: CR2032 (Li-Ion)

Capacity: 220mAh

Battery Life Expectancy: 5+years @ 50presses/day

Storage Temperature: -10 to +70° Celsius.

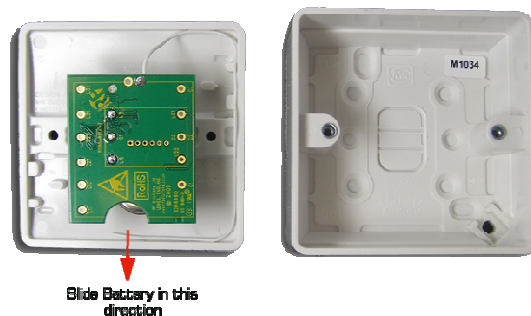
Operating Temperature: 0 to +50° Celsius.

	Min	Typical	Max	Units
Supply Voltage:		3V		Vac
Quiescent Current:		0.47		uA
Operating Frequency	432.9	433.9	434.1	MHz
RF Output Power (ERP)		3		mW
Packet Length		68		mS

Changing batteries:

Open the SWITCHLINK-TX1 by unscrewing the two screws on the front of the case.

Gently slide the battery out of the mounting bracket using your fingers - do not use pliers as you may damage the PCB.



MAINSLINK-RX Receiver

Power Supply: 110 -240Vac @ 50-60Hz

Storage Temperature: -10 to +70° Celsius.

Operating Temperature: 0 to +50° Celsius.

	Min	Typical	Max	Units
Supply Voltage	100	230	250	Vac
Quiescent Current:		0.1		mA
Operating Frequency*	432.9	433.92	434.10	MHz
Maximum switching load (RX)		1200		W
Time delay from Tx on switch to Rx Relay operation:		70		mS
Time delay from Tx sw relax to Rx Relay release:	70	70	-	mS

Product Range:

Other product in this range:

MAINSLINK

Mainslink is a 230V mains switching cable replacement system - very simple to install and very reliable the MAINSLINK simply replaced switch live cables when runs are awkward or expensive. Wire Switched Live and Neutral to the TX and Live, Neutral to the receiver and the MAINSLINK outputs a switch live at the receiver when the Switched live on the transmitter is on.

Important Safety Information:

NOTE:

- Must be installed in compliance with IEEE wiring regulations and (where required) with Part P (Electrical Safety) of building regulations.
- SWITCHLINK is a professional use product and should only be installed by correctly qualified competent person.
- Always Isolate mains powered products before opening the case.
- Information contained in this document is believed to be accurate, however no representation or warranty is given and R.F. Solutions Ltd assumes no liability with respect to the accuracy of such information. Use of R.F Solutions as critical components in life support systems is not authorised except with express written approval from R.F Solutions Ltd.
- If in doubt call our technical support line before use on +44 (0)1273 898007

RF Solutions Ltd. Recycling Notice

Meets the following EC Directives:

DO NOT

Discard with normal waste, please recycle.

ROHS Directive 2002/95/EC

Specifies certain limits for hazardous substances.

WEEE Directive 2002/96/EC

Waste electrical & electronic equipment. This product must be disposed of through a licensed WEEE collection point. RF Solutions Ltd., fulfills its WEEE obligations by membership of an approved compliance scheme.

Waste Batteries and Accumulators

Directive 2006/66/EC

Where batteries are fitted, before recycling the product, the batteries must be removed and disposed of at a licensed collection point.

Environment Agency producer registration number: WEE/JB0104WV.

