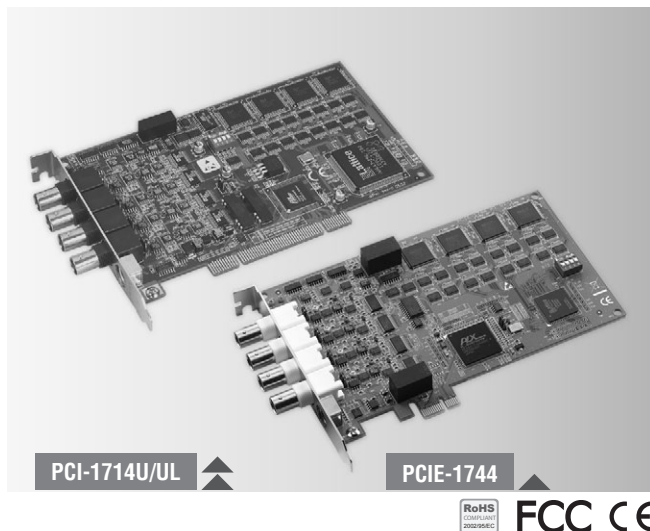


PCI-1714U PCI-1714UL PCIE-1744

**30 MS/s, 12-bit, Simultaneous
4-ch Analog Input Universal PCI Card**
**10 MS/s, 12-bit, Simultaneous
4-ch Analog Input Universal PCI Card**
**30 MS/s, 12-bit, Simultaneous
4-ch Analog Input PCI Express Card**



Features

- 4 single-ended analog input channels
- 12-bit A/D converter, with up to 30 MHz sampling rate
- Programmable gain
- Onboard FIFO memory (PCI-1714U/PCIE-1744: 32,768 samples; PCI-1714UL: 8,192 samples, each channel)
- 4 A/D converters simultaneously sampling
- Multiple A/D triggering modes
- Programmable pacer/counter
- BoardID™ switch
- Universal PCI Bus (PCI-1714U/PCI-1714UL) (supports 3.3 V or 5 V PCI bus signals)
- PCI Express V1.0 (PCIE-1744)

Introduction

PCI-1714U/PCI-1714UL and PCIE-1744 are advanced high-performance data acquisition cards based on the PCI/PCIe bus. With a large FIFO of 32,768 for each channel, the maximum sampling rate of PCI-1714U/PCIE-1744 can get up to 30 MS/s, on each channel, with an emphasis on continuous, non-stop, high-speed, streaming data of samples to host memory. The low-cost PCI-1714UL offers 10 MS/s on each channel at a stable rate, and has also been equipped with a universal PCI interface.

Specifications

Analog Input

- Channels** 4 single-ended
- Resolution** 12 bits
- Max. Sampling Rate** PCI-1714U/PCIE-1744: 30 MS/s
PCI-1714UL: 10 MS/s
- FIFO Size** PCI-1714U/PCIE-1744: 32,768 samples each channel
PCI-1714UL: 8,192 samples each channel
- Overshoot Protection** PCI-1714U/PCI-1714UL: 30 Vp-p
PCIE-1744: 14 Vp-p
- Input Impedance** 50 Ω/1 MΩ/Hi Z jumper selectable/100 pF
- Sampling Modes** Software polling, pacer
- Trigger Modes** Post-trigger, pre-trigger, delay-trigger, about-trigger
- Input Range (V)** ±5, ±2.5, ±1, ±0.5

General

- Bus Type** PCI-1714U/PCI-1714UL: Universal PCI V2.2
PCIE-1744: PCI Express V1.0
- I/O Connectors** 4 x BNC connector (for AI)
1 x PS/2 connector (for Ext. clock and trigger)
- Dimensions (L x H)** 175 x 100 mm (6.9" x 3.9")
- Power Consumption** Typical: 5 V @ 850 mA ; 12 V @ 600 mA
Max.: 5 V @ 1 A; 12 V @ 700m A
- Operating Temperature** 0 ~ 60° C (32 ~ 140° F)
- Storage Temperature** -20 ~ 85° C (-4 ~ 185° F)
- Storage Humidity** 5 ~ 95% RH, non-condensing (refer to IEC 68-2-3)

Ordering Information

- PCI-1714U** 30 MS/s, 12-bit, Simultaneous 4-ch AI PCI Card
- PCI-1714UL** 10 MS/s, 12-bit, Simultaneous 4-ch AI PCI Card
- PCIE-1744** 30 MS/s, 12-bit, Simultaneous 4-ch AI PCIe Card

Accessories

- ADAM-3909** DB9 DIN-rail Wiring Board
- PCL-1010B-1** BNC to BNC Wiring Cable, 1 m
- PCL-10901-1** DB9 to PS/2 Cable, 1 m
- PCL-10901-3** DB9 to PS/2 Cable, 3 m

Pin Assignments

