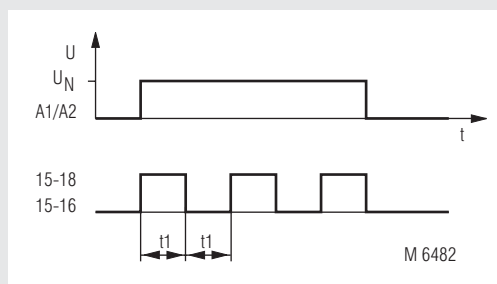
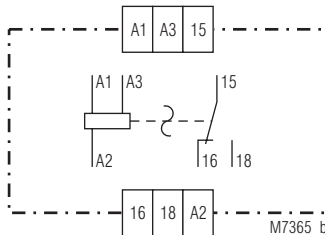


- According to IEC/EN 61 812-1
- Adjustable flashing frequency, pulse times to 100 s
- Start with pulse
- Repeat accuracy $\leq 0,5 \% + 10 \text{ ms}$
- 2-voltage design
- LED indicator for contact position
- 1 changeover contact
- BC 7932N Wire connection: also $2 \times 1,5 \text{ mm}^2$ stranded ferruled (isolated), DIN 46 228-1/-2/-3/-4 or $2 \times 2,5 \text{ mm}^2$ stranded ferruled DIN 46 228-1/-2/-3
- Width 22,5 mm

Funktionsdiagramm



Circuit diagram



Approvals and marking



Indication

LED: on when output relay activated (contacts 15-18 are closed)

Technical data

Time circuit

Time ranges: 0,05 ... 1 s (pulse or space)
0,5 ... 10 s
5 ... 100 s

Time setting: stepless 1:20

Recovery time: $\leq 100 \text{ ms}$

Repeat accuracy: $\leq 0,5 \% + 10 \text{ ms}$

Voltage influence: $\leq 1 \%$

Temperature influence: $< 0,25 \% / \text{K}$

Input

Nominal voltage U_N : AC/DC 24 V¹⁾ + AC 230 V²⁾
AC/DC 24 V¹⁾ + AC 110 ... 127 V²⁾
AC/DC 24 V¹⁾ + AC 42 V²⁾

¹⁾ at terminals A3-A2
²⁾ at terminals A1-A2

Voltage range: AC 0,8 ... 1,1 U_N
DC 0,9 ... 1,25 U_N

Nominal consumption: AC 4 VA DC 0,4 W

Nominal frequency: 50 / 60 Hz

Release voltage: 15 % U_N

Output

Contacts: BC 7932.81, BC 7932N.81: 1 changeover contact

Thermal current I_{th} : 4 A

Switching capacity
to AC 15

NO contact: 3 A / AC 230 V IEC/EN 60 947-5-1

NC contact: 1 A / AC 230 V IEC/EN 60 947-5-1

Electrical life IEC/EN 60 947-5-1
to AC 15 at 1 A, AC 230 V: $1,5 \times 10^5$ switching cycles

Short circuit strength

max. fuse rating: 4 A gL IEC/EN 60 947-5-1

Mechanical life: 10^8 switching cycles

General data

Operating mode: Continuous operation

Temperature range: -20 ... +60°C

Technical data

Clearance and creepages distances

overvoltage category /
contamination level: 4 kV / 2 IEC 60 664-1

EMC

Electrostatic discharge: 8 kV (air) IEC/EN 61 000-4-2
HF irradiation: 10 V/m IEC/EN 61 000-4-3
Fast transients: 4 kV IEC/EN 61 000-4-4

Surge voltages
between

wires for power supply: 1 kV IEC/EN 61 000-4-5
between wire and ground: 4 kV IEC/EN 61 000-4-5

Interference suppression: Limit value class B EN 55 011
Degree of protection: Housing: IP 40 IEC/EN 60 529
Terminals: IP 20 IEC/EN 60 529

Housing: Thermoplastic with V0 behaviour
according to UL subject 94

Vibration resistance: Amplitude 0,35 mm IEC/EN 60 068-2-6
frequency 10 ... 55 Hz

Climate resistance: 20 / 060 / 04 IEC/EN 60 068-1

Terminal designation: EN 50 005

Wire connection

BC 7932: 1 x 4 mm² solid or
2 x 1,5 mm² stranded wire with sleeve
DIN 46 228-1/-2/-3/-4

BC 7932N: 1 x 4 mm² solid or
2 x 2,5 mm² stranded ferruled (isolated)
or
2 x 1,5 mm² stranded ferruled (isolated)
DIN 46 228-1/-2/-3/-4 or
2 x 2,5 mm² stranded ferruled
DIN 46 228-1/-2/-3

Wire fixing:

BC 7932: Flat terminals with self-lifting
clamping piece IEC/EN 60 999-1

BC 7932N: Terminal screws M 3,5
Box terminal with wire protection

Mounting: DIN rail IEC/EN 60 715

Weight: 80 g

Dimensions

Width x height x depth: 22,5 x 84 x 97 mm

Standard type

BC 7932N.81 AC/DC 24 V + AC 230 V 50/60 Hz 0,5 ... 10 s

Article number: 0052669

- Front colour grey, with box terminals
- Output: 1 changeover contact
- Nominal voltage U_N : AC/DC 24 V + AC 230 V
- Time range: 0,5 ... 10 s
- Width: 22,5 mm

Variants

BC 7932/100,

BC 7932N/100: Start with space

Ordering example for Variants

BC 7932 .81 / - - AC/DC 24 V + AC 230 V 50 / 60 Hz 10 s

- Time ranges
- Nominal frequency
- Nominal voltage
- Variant, if required
- Contacts
- BC 7932N: front colour
grey, with box terminals
- BC 7932: front colour
orange, with flat terminals