

# Illuminated Pushbutton Switches

## Specifications:

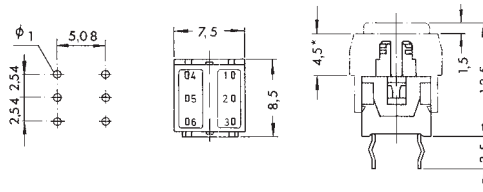
Contact rating:	30 V DC, 0,1 A
Contact resistance:	< 50 mΩ
Insulation resistance:	> 100 MΩ at 500 V DC
Dielectric strength:	500 V, 50 Hz for the duration of 1 minute
Operating temperature:	- 10° to + 70° C
Mechanical life:	minimum 10 000 operations
Contacts/Terminals:	PC terminals, phosphor bronze, silver-plated
Travel:	1,5 mm
Case material:	PBT meets UL 94 V-0
Mounting:	on pc-board
Soldering conditions:	auto-soldering – max.: 3 sec, 245° C ± 10° C

## Models: Switching functions

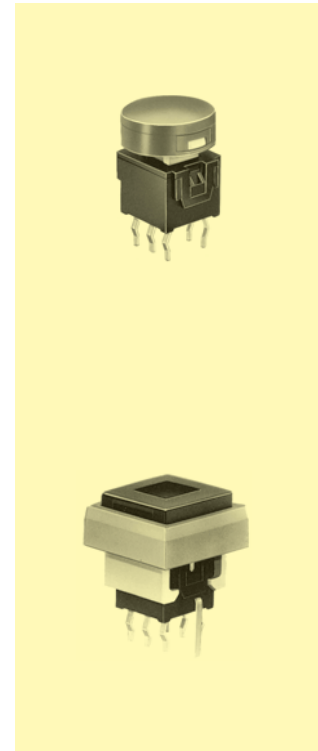
### D P D T

without LED

TP 2 R	on – mom
TP 2 N	on – on



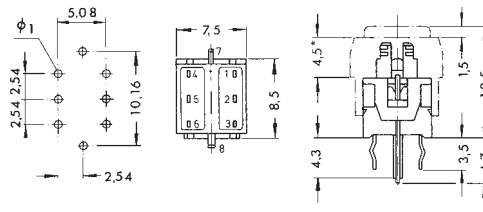
\* 10 mm bezel = 3,8 mm



### D P D T

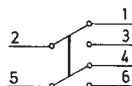
with LED

TP 2 R – L.	on – mom
TP 2 N – L.	on – on
– LR (LED red)	
– LG (LED green)	
– LY (LED yellow)	



\* 10 mm bezel = 3,8 mm

Circuit diagram:



TP 2.-LR: I<sub>F</sub> = 20 mA; U<sub>F</sub> = 2,0 V  
 TP 2.-LG: I<sub>F</sub> = 15 mA; U<sub>F</sub> = 1,95 V  
 TP 2.-LY: I<sub>F</sub> = 15 mA; U<sub>F</sub> = 1,9 V

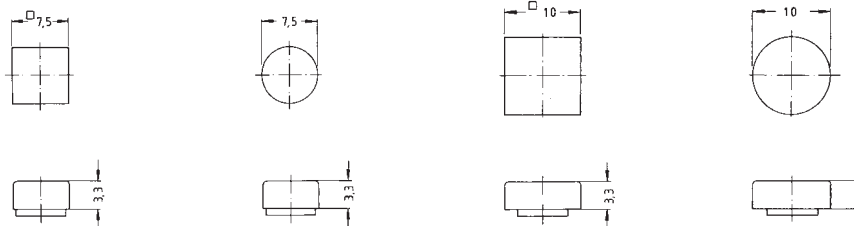




# Illuminated Pushbutton Switches

## Accessories:

### Caps



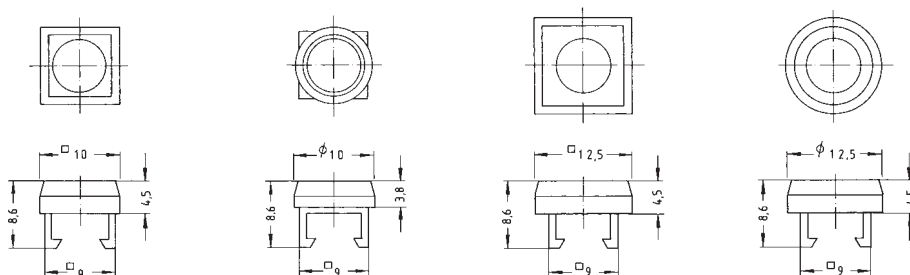
opaque:

dark grey	KT 5317	KT 5217	KT 6317	KT 6217
grey	KT 5307	KT 5207	KT 6307	KT 6207
light grey	KT 5327	KT 5227	KT 6327	KT 6227
ivory	KT 5311	KT 5211	KT 6311	KT 6211
red	KT 5309	KT 5209	KT 6309	KT 6209
green	KT 5306	KT 5206	KT 6306	KT 6206
blue	KT 5304	KT 5204	KT 6304	KT 6204

transparent:

frame	—	—	grey	ivory	grey	ivory
window:						
red	KT 5399	KT 5299	KT 6389	KT 6399	KT 6289	KT 6299
green	KT 5396	KT 5296	KT 6386	KT 6396	KT 6286	KT 6296
yellow	KT 5398	KT 5298	KT 6388	KT 6398	KT 6288	KT 6298

### Bezels



dark grey	FM 5317	FM 5217	FM 6317	FM 6217
grey	FM 5307	FM 5207	FM 6307	FM 6207
light grey	FM 5327	FM 5227	FM 6327	FM 6227
ivory	FM 5311	FM 5211	FM 6311	FM 6211

3