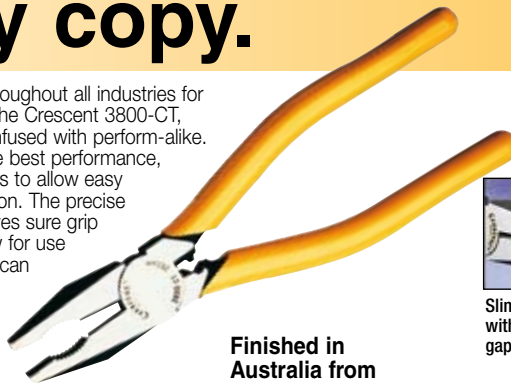


ALL APN ■ AND UPC ● CODE NUMBERS SHOWN ARE PRECEDED BY THE MANUFACTURER APN OR UPC I.D. NUMBER ■ 9337103 & ● 037103.

Solid joint lineman's pliers are made of drop-forged steel with polished heads and gun metal handles. Durable, keen and induction hardened cutting edges. Available with either yellow cushion grips or Tenite butyrate grips. Crescent lineman's pliers can be supplied where indicated, with insulating grips made from Tenite butyrate. Tests have shown this material to be highly suitable for this purpose. It has a high dielectric value and we recommend pliers to which it has been applied to those who have need for insulated tools. Available on lineman's pliers where the letter "T" after the tool number is indicated (i.e. 50-7T).

## The one they copy.

The Crescent 3800-CT Universal cutting plier is known throughout all industries for years of work and performance. Other brands may copy the Crescent 3800-CT, but the problem is that look-alikes can sometimes get confused with perform-alike. And that's a shame because Crescent users only want the best performance, regardless. Take the lengthened and hardened cutting jaws to allow easy cutting of flat multi-core cables. It's a clean cut in one action. The precise jaw gap allows easy wire-work and the cross checking gives sure grip of the job. Built into the handle is a hardened crimping jaw for use with 1.5mm<sup>2</sup> to 6mm<sup>2</sup> non-insulated conductors. And you can use this crimper from either side of the plier – there are no obstacles, making the job quick and easy. Check the features of the Crescent 3800-CT insulated plier, and be sure to ask for it by name – you won't be disappointed. That's the one they copy!



Finished in Australia from imported forgings.

### The features in detail:



Slim line jaw with precise jaw gap.



Extended and hardened cutting jaw for use with flat multi-core cabling.



Hardened crimping jaw built into handle for use with solderless connectors.

### Linesman's Pliers - Pro Series



Material Number	Description mm/in	APN/UPC	Shelf Pack
<b>Universal Cutting Plier with Crimper</b>		Carded	
3800CTV	200/8	■ 466817	6
<b>Universal Cutting Plier with Crimper in Nylon Pouch</b>			
3800CTP	200/8	■ 473709	4

- Insulated grips
- Precise jaw gap for wire work
- Cross hatch jaws for positive grip
- Serrated pipe grip

### Crescent High Voltage Pliers

(Conforms to all aspects of DIN 57 680 Part 2/VDE 0680 Part 2 1978)



<b>Universal Plier</b>		Carded	
3800CHV	200/8	■ 473730	4
<b>Diagonal Cutter</b>			
5428HV	200/8	■ 321512	4
5427HV	180/7	■ 321383	4
<b>Long Nose Plier</b>			
6547HV	180/7	■ 365714	6

### Crescent Compound Action Pliers



<b>Linesmans Plier</b>		Carded	
PS20509C	229/9	● 216861	3
<b>Long Nose Plier</b>			
PS6549C	229/9	● 216823	3
<b>Diagonal Plier</b>			
PS5429C	229/9	● 216847	3

- Heat treated chrome vanadium alloy steel construction
- Patented high-leverage design gives up to 60% power gain
- Special heat-treated steel spring holds jaws comfortably open
- Tested to over 1,000,000 cycles

## Screwdriver Range - Pro Series Screwdrivers

### Stubby



Material Number	Blade width mm/in	Blade length mm/in	APN/UPC	Shelf Pack
<b>Round Blade</b> ●				
214R	6/ 1/4	40/ 1 1/2	■ 651442	6

### Regular



<b>Square Blade</b> ■				
1238MS	10/ 3/8	305/12	■ 653101	6

### Regular Phillips



<b>Phillips</b> ⊕				
30P	3/ 1/8	75/3	■ 660024	6
41P	5/ 3/16	100/4	■ 660086	6
61P	5/ 3/16	150/6	■ 660109	6
42P	6/ 1/4	100/4	■ 660161	6
62P	6/ 1/4	150/6	■ 660185	6
63P	8/ 5/16	150/6	■ 660246	6

### Regular Phillips Insulated



<b>Insulated</b> ⊕				
61IP	5/ 3/16	150/6	■ 660123	6
62IP	6/ 1/4	150/6	■ 660208	6

### Stubby - Phillips



<b>Phillips</b> ⊕				
12P	6/ 1/4	40/ 1 1/2	■ 660147	6

### Pozidrive



<b>Pozidrive</b> ⊕				
31PZ	5/ 3/16	100/4	■ 668020	6
52PZ	6/ 1/4	150/6	■ 668068	6

## Voltage Detector



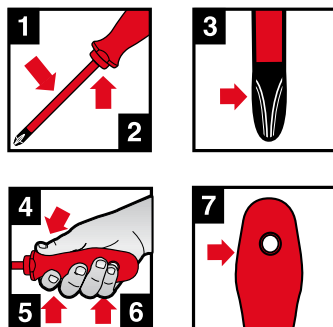
CVS600V	12V-600V, 50-60Hz	■ 001872	10
---------	-------------------	----------	----

- Voltage detection range 12-600V AC, 50-60Hz
- Adjustable sensitivity allows tracing of wires behind walls, at switches or receptables
- Features include Sensing Tip, 360° Visual Indicator and Sensitivity Adjustment
- Handy pen size tool that clips securely inside your shirt pocket
- Two 1.5V button style batteries included

## 1000 Volt Insulated Screwdriver Set

### 7 Piece Insulated Screwdriver Set

CS7-1000V	1000 Volt Insulated	■ 650704	1
-----------	---------------------	----------	---



CAT. No.	SIZE	TYPE
613-030	3.0 x 100mm	Slotted
613-035	3.5 x 100mm	Slotted
613-040	4.0 x 100mm	Slotted
613-055	5.5 x 125mm	Slotted
614-102	#1 x 80mm	Phillips
614-203	#2 x 100mm	Phillips
+ Mains Testing Screwdriver		



'VDE' is the symbol of the electrician standardization organisation, which does random testing of electrician requirements.



The 'GS' symbol by German TUV (independent organisation for industrial certification) signifying 'Tested for Safety'.

- 1 Chrome molybdenum vanadium steel shaft provides durability.
- 2 Anti-roll handle design.
- 3 Specially treated black oxide blades eliminate light reflection, for precision fit.
- 4 Thumb bolster allows added downward force.
- 5 Narrow pinch grip for comfort and control.

- 6 Wide ergonomically designed handle allows sustained high torque with minimal muscle fatigue.
- 7 For added torque, a second screwdriver can be inserted through hang hole.
- 8 Individually tested up to 1000V.

## Crimping Tools



Material Number	Description mm/in	APN/UPC	Shelf Pack
<b>Insulated Terminals</b>			
CCT10	22-10AWG (0.05-6mm <sup>2</sup> )	■ 471217	1
<b>Non Insulated Terminals</b>			
CCT8	22-8AWG (0.05-10mm <sup>2</sup> )	■ 471200	1

- Adjustment wheel for adjusting crimping pressure
- Multiple crimp sizes
- Co-moulded ergonomic handle for improved comfort and extra length for one or two handed operation
- CCT10 is suitable for Insulated terminals 22-10AWG (0.05-6mm<sup>2</sup>)
- CCT8 is suitable for Non-Insulated terminals 22-8AWG (0.05-10mm<sup>2</sup>)

## Ratcheting Cable Cutter



### Ratcheting Cable Cutter

CRCC1	340mm	■ 471231	5
-------	-------	----------	---

- For clean and easy cutting of copper and aluminium cable with an outer diameter of up to 45mm diameter (not suitable for cutting steel wire, steel braided cable or hardened cable)
- Specially sharpened and hardened blades for clean cuts
- Ratcheting mechanism with compact design allows easy one handed operation, requiring minimal force to operate
- Locking blade with blade release allows blade to be opened in mid-cut (push handles apart and press blade release button)
- Quick adjustment allowed by pushing handles apart, press blade release button and adjust blade to required position
- Blade Lock - Can be locked (red position) or unlocked (blue position)

## Conduit Cutter



### Conduit Cutter

CCC42	Cuts 3mm-42mm profile	■ 471224	1
-------	-----------------------	----------	---

- Heat treated cutting blade for cutting P.V.C. pipe and water hose up to 42mm diameter
- Cuts cleanly without the need for de-burring
- Heavy duty design and construction
- Bright red colour for easy standout in the tool box and workplace
- Jaw insert enables cutting of additional profiles, including square

## Wire Stripper



### Self Adjusting Wire Stripper

CWS1	Cuts and strips 24-10 AWG	■ 471248	1
------	---------------------------	----------	---

- Used for stripping and cutting wire, crimping insulated and non-insulated terminals and crimping ignition terminals
- Cuts and strips 24-10 AWG (0.2-6mm<sup>2</sup>) copper or aluminium wire
- Crimps 22-10 AWG (0.5-6mm<sup>2</sup>) insulated & non-insulated terminals
- Crimps 7-8mm ignition terminals
- Fine adjustments can be made to strip wire insulation smaller than AWG24 (0.2mm<sup>2</sup>) without cutting into the wire
- Stopper for adjusting wire strip length (rotate stopper when stripper length is not required)

## H.K. Porter Electrical Cable Cutter



### Electrical Cable Cutter

0890CSJ	241/9 1/2	● 911919	1
---------	-----------	----------	---

- Special Alloy hardened blades
- Comfort grips
- High-leverage jaws with shear-cut blades
- Do NOT cut steel or ACSR
- NOT an insulated tool