

SPECIFICATION FOR APPROVAL

CUSTOMER: IDEAL

CUSTOMER P/N: 5206-20S09-V-3A

SERIES MODEL NO.: SA06-20S08R-V

PART NO.: SA06-20S09-V-3A

REV.:

DESCRIPTION: **Switching Adapter Desk Top (L3P)**
100-240Vac±10%,+9V/2.2A(RoHS)

ISSUED DATE: October 26, 2011

PUBLICATION	CONFIRMATION

PART NO.: SA06-20S09-V
 CUSTOMER P/N:
 DESCRIPTION: SWITCHING ADAPTER +9V/2.2A
 ISSUED DATE: February 25, 2010
 REVISION NO.: Original

TABLE OF CONTENTS

- 1.0 INPUT REQUIREMENTS
- 2.0 OUTPUT REQUIREMENTS
- 3.0 EFFICIENCY
- 4.0 PROTECTION REQUIREMENTS
- 5.0 ENVIRONMENTAL
- 6.0 EMI REQUIREMENTS
- 7.0 SAFETY REQUIREMENTS
- 8.0 RELIABILITY
- 9.0 DIMENSIONS

00	Initial Released	2010/2/25
REV	DESCRIPTION	DATE

APP. BY	CHK. BY	PRE. BY
Kenny 2010/2/25	Kenny 2010/2/25	Stone 2010/2/25

RD-SPEC/SA06-20S09-V(EPS 2.0)-R00

1.0 INPUT REQUIREMENTS

- 1.1 AC VOLTAGE:
90Vac TO 265Vac INPUT
- 1.2 FREQUENCY:
47HZ TO 63HZ
- 1.3 AC CURRENT:
0.8A MAX.
- 1.4 INRUSH CURRENT:
60A MAX. AT 230Vac, FULL LOAD, COLD START, 25°C.

2.0 OUTPUT REQUIREMENTS

- 2.1 OUTPUT REGULATION, RIPPLE AND NOISE, CURRENT:

OUTPUT VOLTAGE	OUTPUT TOLERANCE	RIPPLE & NOISE	LOAD	
			MIN	MAX
+ 9Vdc	+8.55V~+9.45V	(*)90mVp-p	0.0A	2.2A

NOTE: (*) MEASURING IS DONE BY 20MHZ BANDWIDTH LIMITED OSCILLOSCOPE AND TERMINATED EACH OUTPUT WITH A 0.1uF AND 10uF CAPACITORS

- 2.2 OVERSHOOT:
OVERSHOOT SHOULD NOT EXCEED 10% OVER NOMINAL VOLTAGE.
- 2.3 RISE TIME:
50mS MAX.
- 2.4 HOLD-UP TIME:
10mS MIN. AT 115Vac AND FULL LOAD

3.0 EFFICIENCY

THE UNIT SHOULD PROVIDE DC CONVERSION EFFICIENCY MINIMUM 75% AT FULL LOAD, 115Vac INPUT.

4.0 PROTECTION REQUIREMENTS

4.1 OVER VOLTAGE PROTECTION:

14.4V MAX.

4.2 SHORT CIRCUIT PROTECTION:

THE UNIT SHOULD BE AUTO-RECOVER IN CASE ANY SHORT-CIRCUIT SHOULD OCCUR AT ANY DC OUTPUT.

5.0 ENVIRONMENTAL

5.1 OPERATING:

TEMPERATURE: 0 TO 40°C.

RELATIVE HUMIDITY: 20% TO 80% RH.

5.2 STORAGE:

TEMPERATURE: -20 TO 85°C.

RELATIVE HUMIDITY: 0% TO 90% RH.

6.0 EMI REQUIREMENT

THE SWITCHER DESIGNED TO MEET BELOW STANDARDS.

FCC CLASS B

CNS 13438 CLASS B

CISPR CLASS B

7.0 SAFETY REQUIREMENTS

7.1 SAFETY REGULATION:

THE SWITCHER DESIGNED TO MEET BELOW STANDARDS.

UL 1950, CUL, TUV EN60950.

7.2 OTHERS REGULATION:

MEET CALIFORNIA ENERGY COMMISSION APPLIANCE EFFICIENCY REGULATIONS:

20W: NO-LOAD MODE INPUT <0.3W, ACTIVE MODE EFFICIENCY >81%

7.3 DIELECTRIC STRENGTH:

INPUT AND OUTPUT: 1800Vac(10mA) @ 3 SECOND

INPUT AND FG: 1800Vac(10mA) @ 3 SECOND.

8.0 RELIABILITY

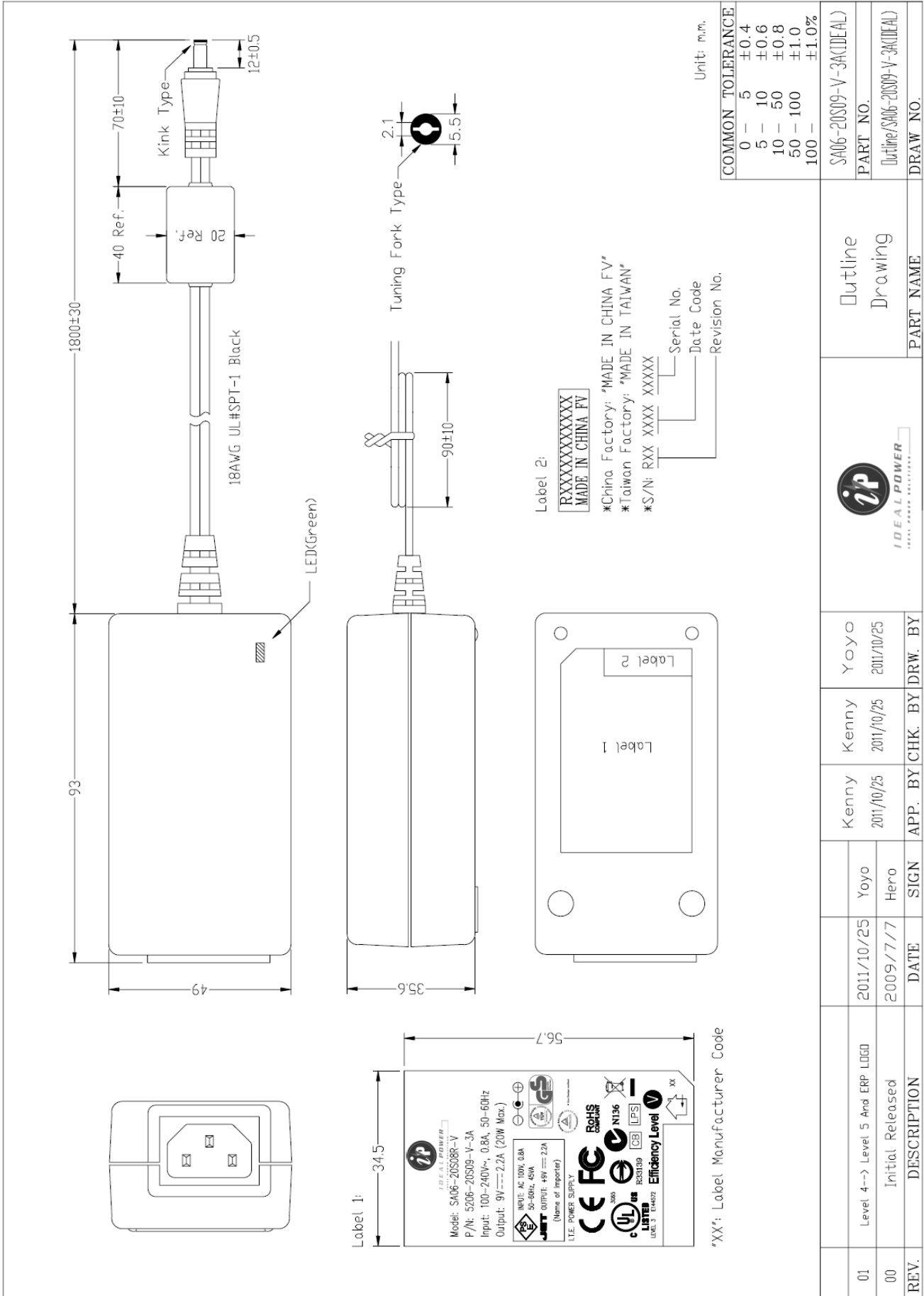
8.1 MTBF: 40000 HOURS.

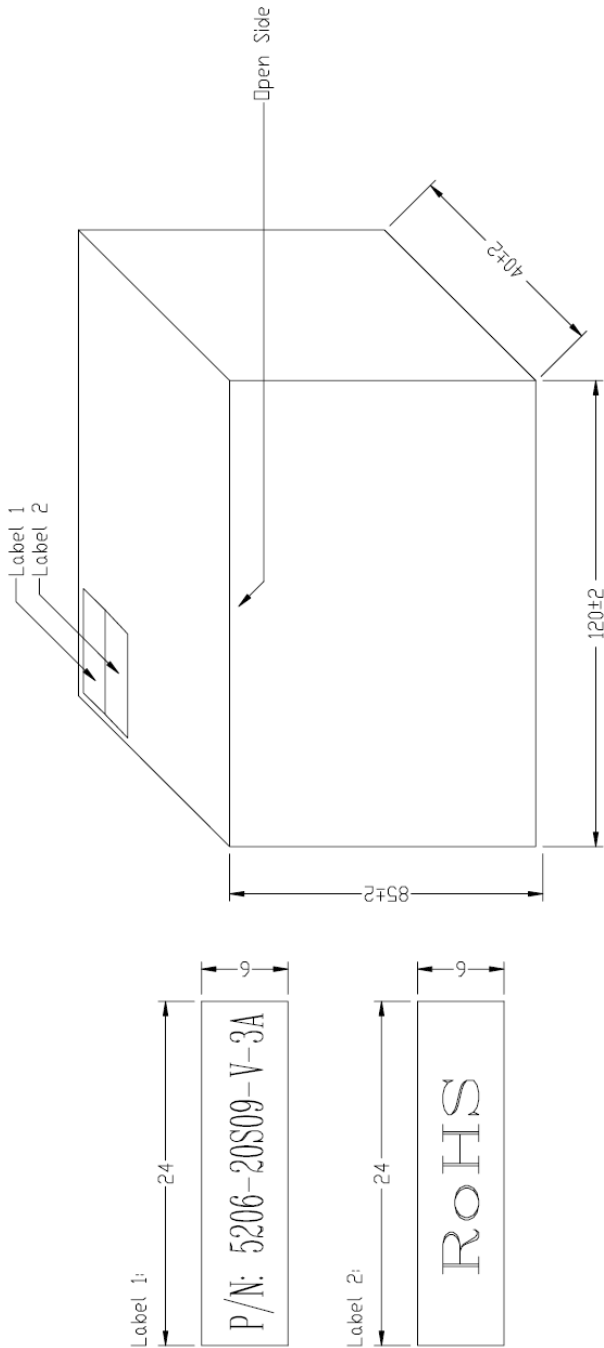
8.2 B-TEST:

VIBRATION, SHOCK, ALTITUDE, STATIC COMPRESSION, DROP... ETC. PLEASE REFER TO B-TEST PROCEDURE.

9.0 DIMENSIONS

SEE ASSEMBLY DRAWING.





Box P/N: 12-0015
Material: A卡 400磅(0.53t) White

unit: mm.

COMMON TOLERANCE	
0 - 5	±0.4
5 - 10	±0.6
10 - 50	±0.8
50 - 100	±1.0
100 -	±1.0%

SA06-20S09-V-3A(IDEAL)
PART NO.
Packing(SA06-20S09-V-3A(IDEAL))
DRAW NO.

REV.	Initial Released	2009/7/7	Hero	Kenny	2009/7/7	2009/7/7	Hero	 IDEAL POWER	Packing Drawing
	DESCRIPTION	DATE	SIGN	APP. BY	CHK. BY	DRW. BY	PART NAME		