



Note:
T3299EG : Fixed EU Mains Lead
All Other Parts : Fixed UK Mains Lead

Features:

- Universal / Full range AC input
- Fixed AC mains lead (UK & EU)
- Class II power (no earth)
- Small & Compact design
- Built-in wall-mounting tabs
- Cost effective and high reliability
- Protections:
Over Voltage, Short circuit & Over Temp.
- Approvals: GS, UL/cUL & CE
- Level V ErP/EuP efficiency compliant
- MTBF >50,000 hours
- 1 Year Warranty



Output Characteristics						
Part Number	T3514EG	T3515EG	T3712ST	T3299EG	T3516EG	T3518EG
Voltage	5Vdc	9Vdc	12Vdc	12Vdc	15Vdc	24Vdc
Current Max.	2A	1.33A	1A	1A	0.8A	0.5A
Current Min.	0A	0A	0A	0A	0A	0A
Power (watts)	10W	12W	12W	12W	12W	12W
Line Regulation	+/-5%	+/-1%	+/-5%	+/-5%	+/-5%	+/-1%
Voltage Tolerance	+/-5%	+/-5%	+/-5%	+/-5%	+/-5%	+/-5%
Ripple & Noise (mV p-p)	100mV	150mV	150mV	150mV	150mV	240mV
Protections	Over Voltage: The output voltage shall be clamped by internal protection zener Short Circuit: Output shut down and auto restart Temperature: No ignition, smoke or deformation of the case					
Case Size (See below) mm	75 x 47.5 x 26.5	75 x 47.5 x 26.5	75 x 47.5 x 26.5	75 x 47.5 x 26.5	75 x 47.5 x 26.5	75 x 47.5 x 26.5
Weight (approx.)	240g	240g	250g	220g	230g	250g
DC Cord	1.5 Metre	1.8 Metre	1.8 Metre	1.8 Metre	1.5 Metre	1.8 Metre
DC Plug (mm)	Straight 2.1 C+ve	Straight 2.1 C+ve	Straight 2.1 C+ve	Straight 2.1 C+ve	Straight 2.1 C+ve	Straight 2.1 C+ve

Input Characteristics						
Rated Input Voltage	100-240Vac					
Full Input Voltage Range	90-264Vac					
Rated Frequency	50-60Hz					
Full Frequency Range	47-63Hz					
Efficiency (min.)	73.36%	>77.7%	>77.7%	>77.7%	>77.7%	>77.7%
Input Current (RMS Max.)	300mA	300mA	300mA	300mA	300mA	300mA
Inrush Current 115Vac: 230Vac:	30A Max. 60A Max.	30A Max. 60A Max.	30A Max. 60A Max.	30A Max. 60A Max.	30A Max. 60A Max.	30A Max. 60A Max.
Leakage Current	<0.25mA	<0.25mA	<0.25mA	<0.25mA	<0.25mA	<0.25mA
Input Power (no load)	<0.3W Max. (Level V ErP/EuP/CEC Compliant)					
AC Mains Lead	1.8 Metre UK Plug	1.8 Metre UK Plug	1.8 Metre UK Plug	1.8 Metre EU Plug	1.8 Metre UK Plug	1.8 Metre UK Plug

Safety, Mechanical and Other Characteristics	
Range Model Designations	3A-124DA (specified individually on each product label)
Hi-Pot Specification	3000Vac or 4242Vdc 10mA 1Min. (I.P. to O.P.)
Insulation Resistance	500Vdc to test the I.P.-O.P resistance not less than 100Mohm (I.P. to O.P.)
Operating Temperature	0°C to 40°C
Storage Temperature	-10°C to 70°C
Operating Humidity	20% to 80%
Storage Humidity	10% to 90%
Safety Approvals	GS & CE (T3712ST also approved to: UL/cUL)
EMI Standards	FCC Class B, CE & VCCI
PB-free	Yes. RoHS Compliant
MTBF	50K Hours (mean time before failure)



Stontronics Ltd

Chancerygate Business Centre, Cradock Road, Reading, Berkshire, RG2 0AH.

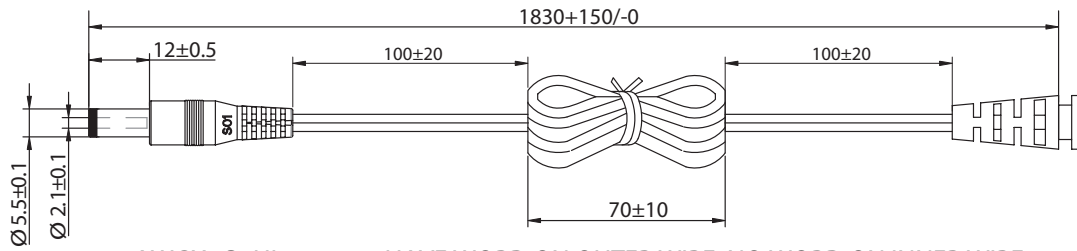
Tel: +44 (0) 118 931 1199 • Fax: +44 (0) 118 931 1145 • Email: info@stontronics.co.uk • Web: www.stontronics.co.uk

Please Note: Image shown is representative of entire range. Individual PSU image &/or drawings or data sheets available on request.

Stontronics Ltd accepts no responsibility for typographical errors in the production of this leaflet. Product specifications are subject to change without notice.

DC Plug & Lead Drawing:

- 1.8M DC Lead:

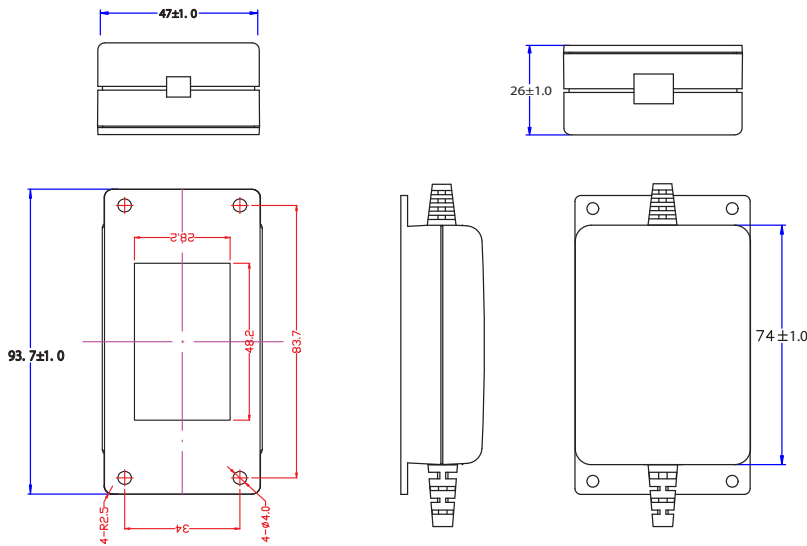


#20AWGX2C UL2468
OD: Ø1.9*3.8

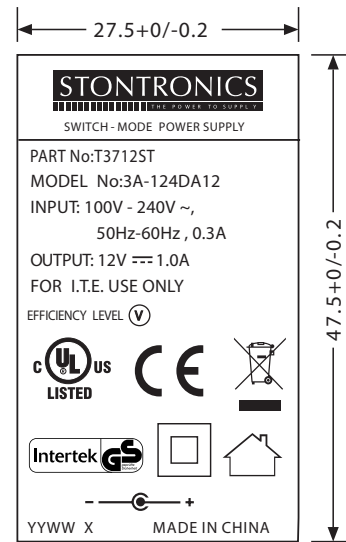
HAVE WORD ON OUTER WIRE, NO WORD ON INNER WIRE

Case Drawing:

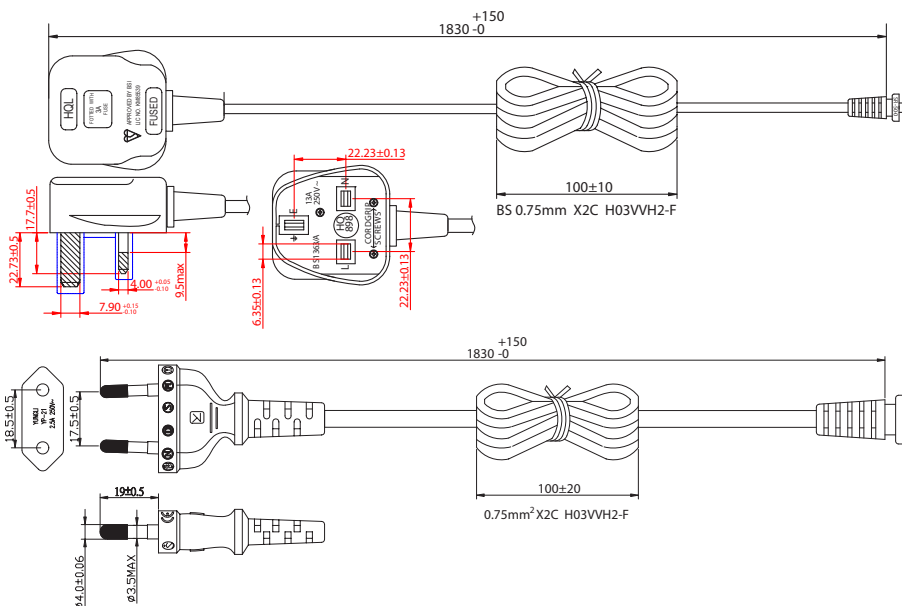
- 75 x 47.5 x 26.5 mm:



Example Label:



UK & Euro AC Leads:



Stontronics Ltd

Chancerygate Business Centre, Cradock Road, Reading, Berkshire, RG2 0AH.

Tel: +44 (0) 118 931 1199 • Fax: +44 (0) 118 931 1145 • Email: info@stontronics.co.uk • Web: www.stontronics.co.uk

Please Note: Image shown is representative of entire range. Individual PSU image &/or drawings or data sheets available on request.

Stontronics Ltd accepts no responsibility for typographical errors in the production of this leaflet. Product specifications are subject to change without notice.