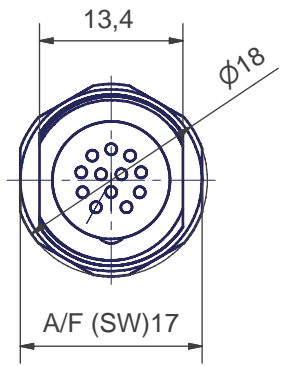
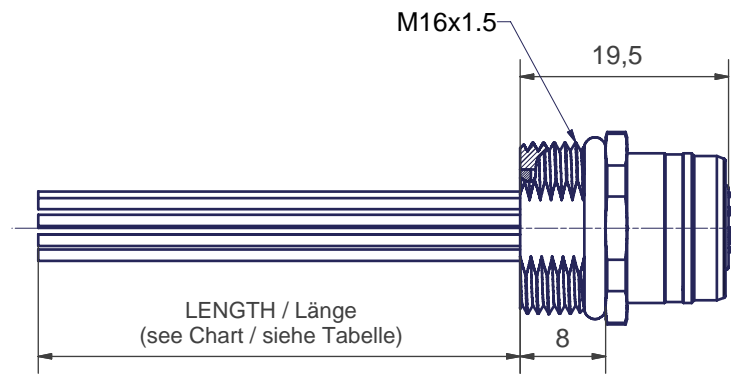
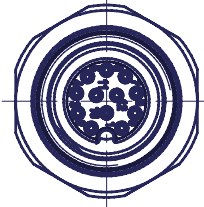


Part No	SAP No	Length
WRCU20E01C200	1200845012	200mm
WRCU20E01C300	1200845013	300mm

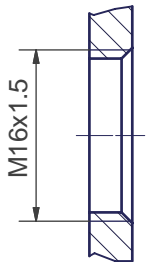
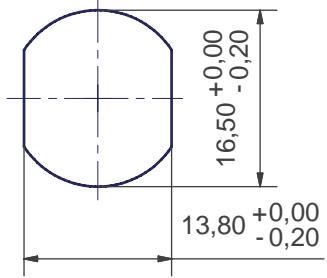
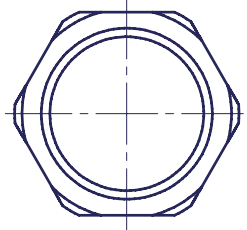
**WIRING DIAGRAM**

- 1 BN - Brown
- 2 BU - Blue
- 3 WH - White
- 4 GN - Green
- 5 PK - Pink
- 6 YE - Yellow
- 7 BK - Black
- 8 GY - Grey
- 9 RD - Red
- 10 VT - Violett
- 11 GYPK - Grey/Pink
- 12 RDBU - Red/Blue

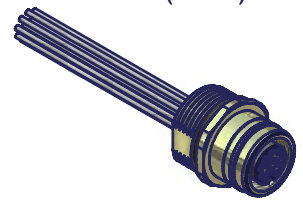


Lock Nut M16x1.5  
P/N: 0900 00090 00010  
Lock Nut needs to be order separate

Panel Cutout



(1:1)



Allgemeine Kennwerte General Characteristics		Norm Standard			
Polzahl Kontaktanordnung	Number of contacts Contact configuration	IEC 947-5-2	12		
Bemessungsspannung	Rated Voltage	IEC 664	30V AC / DC		
Verschmutzungsgrad	Pollution Degree	IEC 664	3		
Betriebsstrom	Current carrying capacity	IEC 512-3 Test 5 b	1,5A		
Durchgangswiderstand	Contact Resistance	IEC 512-2 Test 2 A	< 5mOhm		
Bemessungsstoßspannung	Rated Impulse Withstand Voltage	IEC 664	0,8 kV		
Prüfspannung	Test Voltage	IEC 60512-2 Test 4 A	0,5 kV / 60 sec		
Isolationswiderstand	Insulation Resistance	IEC 512-2 Test 3 A	> 100 MOhm		
IP - Schutzart	IP Degree Of Protection	IEC 529	IP 67		
Stift Durchmesser	Pin Diameter		0,6mm		
Werkstoffe	Kontakte	Materials	Kupferlegierung / copper alloy		
	Kontaktoberfläche		Contacts Plating	Au/Ni	
	Kontaktträger		Dielectric Material	PA 6.6	
	Dichtung (O-Ring)		Gaskets (O-Ring)	NBR	
	Gehäuse		Housing	CuZn (brass) mit Ni-Oberfläche Nickel Plated	
Anschlußart	Termination		Crimp		
Brennbarkeit	Kontaktträger	Flamm- ability	Inserts	UL 94	V-0
	Leitung / Kabel		Cable		
Mechanische Lebensdauer	Mechanical Operation				100 Steckzyklen / Mating Cycles
Temperaturbereich	Temperature Range	IEC 60668-1			-25°C / +90°C

This drawing and its contents are the proprietary and confidential property of Woodhead Industries Inc. and/or its subsidiaries and may not be used or disclosed to others without the express prior written consent of Woodhead Industries Inc. and/or its subsidiaries.			
		UNLESS OTHERWISE SPECIFIED x = ±1 X.X = ±0,1 X.XX = ±0,05 Winkel = 1°	Scale 2:1 (1:1)      Dimensions mm
PROJECTION 1 : GER		Date      Name	Material Finish
		PROC 02.06.2008 US	M12-12P Receptacle Front Mount, M16x1.5, 0,14mm <sup>2</sup>
		CHK 24.04.2009 FP	M12-GerBu-12P-Front-M16x1.5, 0,14mm <sup>2</sup>
		Norm. 24.04.2009 FP	
<b>Woodhead Connectivity GmbH</b>			
03	WEU2009-0366	22.04.09	NS
02	WEU2009-0157	13.11.08	US
01	INITIAL RELEASE	02.06.08	US
Rev.	Change	Date	Name
Gewerbestraße 60 75015 Bretten-Gölshausen Tel.: 07252/9496-0 Fax: 07252/9496-199			Sheet 1 A3
Filename SD-WRCU20E01CXXX.idw			