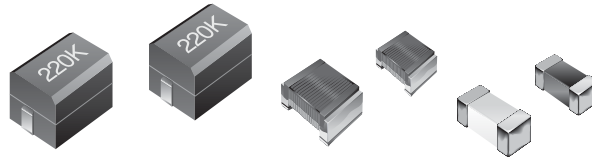




# Bourns Surface Mount Chip Inductor Capability Matrix



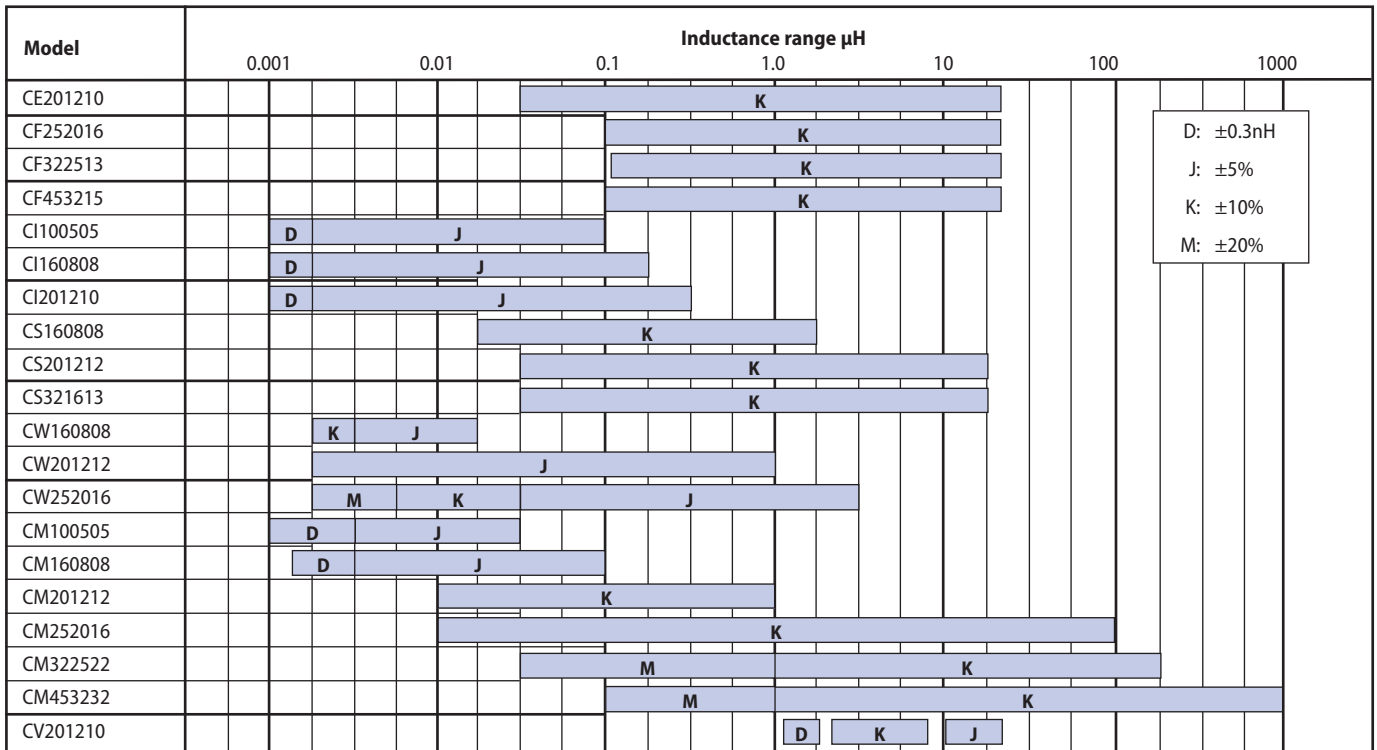
## Product Selection Guide

Model	Technology		Construction		Shielded	Preferred Models	Lab Kit Availability	Size - mm (L x W x H)
	Wirewound	Multi-Layer	Open	Sealed				
CE201210		•		•			•	2.0 x 1.25 x 1.25
CF252016		•		•	•	•	•	2.5 x 2.0 x 1.6
CF322513		•		•	•	•	•	3.2 x 2.5 x 1.3
CF453215		•		•	•	•	•	4.5 x 3.2 x 1.5
CI100505		•		•		•	•	1.0 x 0.5 x 0.5
CI160808		•		•		•	•	1.6 x 0.8 x 0.8
CI201210		•		•		•	•	2.0 x 1.25 x 1.0
CS160808		•		•	•	•	•	1.6 x 0.8 x 0.8
CS201212		•		•	•	•	•	2.0 X 1.25 X 1.25
CS321613		•		•	•	•	•	3.2 X 1.6 X 1.3
CW160808	•		•				•	1.6 X 0.8 X 0.8
CW201212	•		•				•	2.1 X 1.5 X 1.3
CW252016	•		•				•	2.75 X 2.6 X 2.0
CM100505	•			•		•		1.0 x 0.5 x 0.5
CM160808	•			•		•	•	1.6 x 0.8 x 0.8
CM201212	•			•		•	•	2.0 X 1.25 X 1.25
CM252016	•			•		•	•	2.5 X 2.0 X 1.6
CM322522	•			•		•	•	3.2 X 2.5 X 2.2
CM453232	•			•		•	•	4.5 X 3.2 X 3.2
CV201210		•		•	•		•	2.0 x 1.25 x 1.25

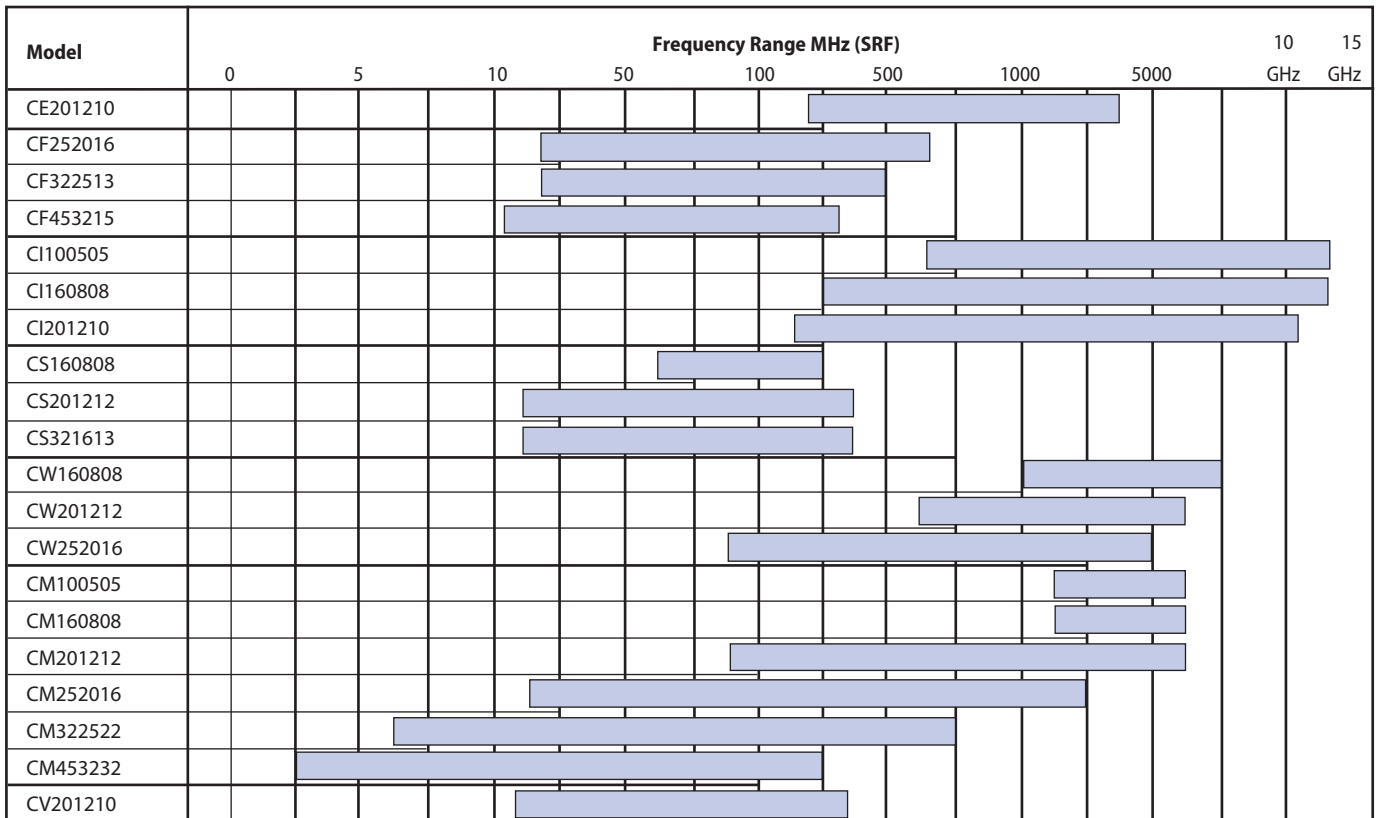
## Size Comparison Guide

Description	(Inches)	0402	0603	0805	1008	1206	1210	1812
	(Millimeters)	1005	1608	2012	2520	3216	3225	4532
Wirewound Sealed				CM201210	CM252016		CM322513	CM453232
Wirewound Open			CW160808	CW201210	CW252016			
Laser-cut Wire		CM100505	CM160808					
Multi-Layer Ceramic		CI100505	CI160808	CE/CI201210				
Multi-Layer Ferrite			CS160808	CV/CS201210	CF252016	CS321613	CF322513	CF453215

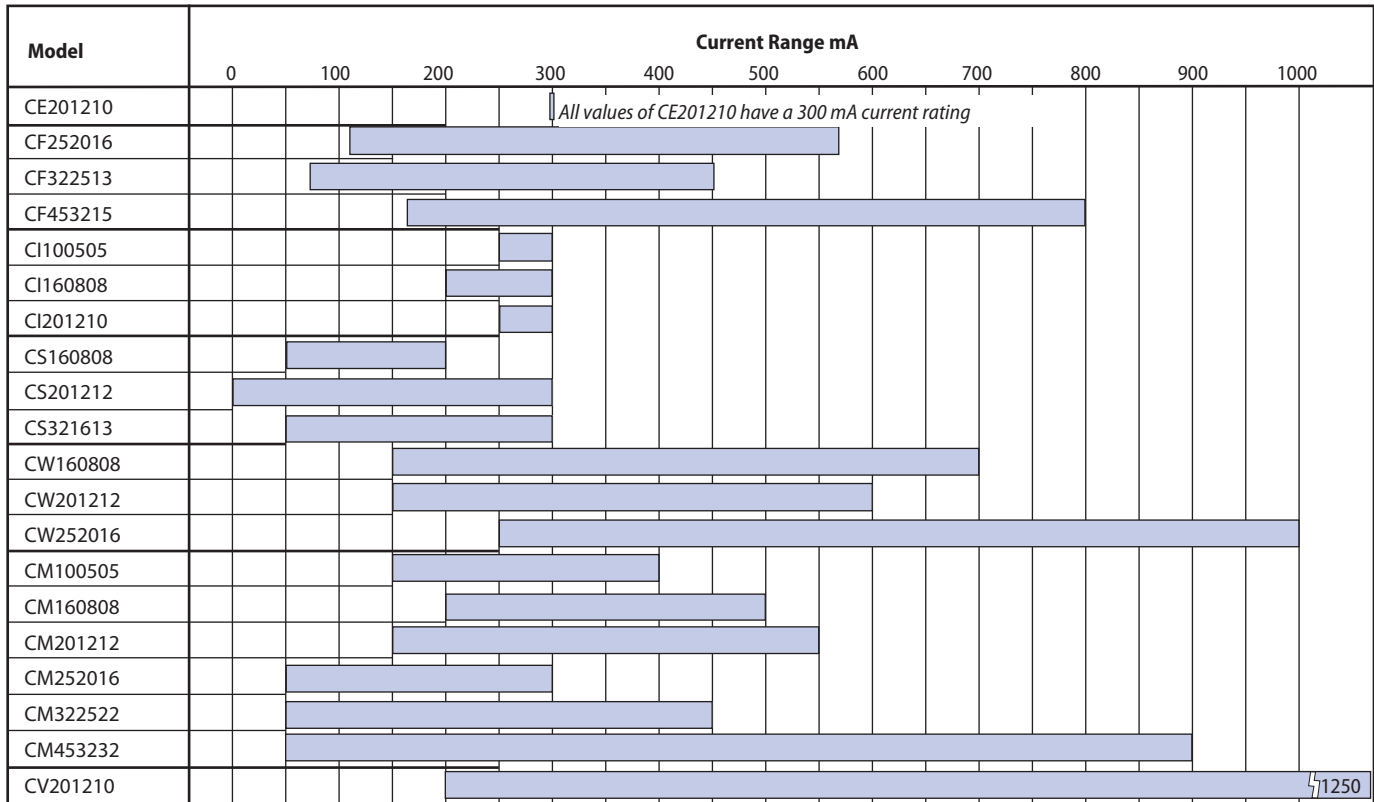
## Inductance Range



## Frequency Range



## Current Range



## Lab Kit Offering

Bourns Lab Kit Part Number	Product Size (mm)	Inductance Range	Values Per Kit	Quantity		E Series
				Per Value	Total	
CE201210-LAB1	2.0 x 1.25 x 1.25	0.047 $\mu$ H to 33 $\mu$ H	18	30	480	E12 / E6
CI100505-LAB1	1.0 x 0.5 x 0.5	1.0 nH to 100 nH	18	40	720	E12 / E6
CI160808-LAB1	1.6 x 0.8 x 0.8	1.0 nH to 220 nH	18	20	360	E12 / E6
CI201210-LAB1	2.0 x 1.25 x 1.0	1.0 nH to 220 nH	17	30	510	E6
CS160808-LAB1	1.6 x 0.8 x 0.8	47 nH to 2.2 $\mu$ H	18	40	720	E12 / E6
CS201212-LAB1	2.0 x 1.25 x 1.25	47 nH to 33 $\mu$ H	18	30	540	E6
CS321613-LAB1	3.2 x 1.6 x 1.3	47 nH to 33 $\mu$ H	18	30	540	E6
CW160808-LAB1	1.6 x 0.8 x 0.8	4.7 nH to 220 nH	16	30	480	E12 / E6
CW201212-LAB1	2.1 x 1.5 x 1.3	2.2 nH to 910 nH	13	25	325	E6
CW252016-LAB1	2.75 x 2.6 x 2.0	10 nH to 4.7 $\mu$ H	17	20	340	E6
CM160808-LAB1	1.6 x 0.8 x 0.8	1.5 nH to 100 nH	18	30	540	E12
CM201212-LAB1	2.0 x 1.25 x 1.25	3.9 nH to 1.0 $\mu$ H	18	20	360	E6
CM252016-LAB1	2.5 x 2.0 x 1.6	10 nH to 100 $\mu$ H	25	20	500	E6
CM322522-LAB1	3.2 x 2.5 x 2.2	0.1 $\mu$ H to 220 $\mu$ H	21	10	210	E6
CM453232-LAB1	4.5 x 3.2 x 3.2	0.1 $\mu$ H to 1000 $\mu$ H	25	10	250	E6
CV201210-LAB1	2.0 x 1.25 x 1.25	1.5 $\mu$ H to 33 $\mu$ H	18	30	510	E12 / E6

Specifications are subject to change without notice.



Americas: Tel +1-951 781-5500  
Fax +1-951 781-5700

Europe: Tel +41-(0)41 768 55 55  
Fax +41-(0)41 768 55 10

Asia-Pacific: Tel +886-2 256 241 17  
Fax +886-2 256 241 16