

IEC Appliance Inlet C14 with Filter, Fuseholder 1- or 2-pole, optional Voltage Selector (step switch)

Plug removal necessary for fuse replacement



Snap-in mounting from front side without voltage selector
Fuse drawer must be ordered separately (see accessories).



Screw-on mounting from rear side without voltage selector



Screw-on mounting from front side with voltage selector



Description

- Panel Mount:
Screw-on version from front or rear side, snap-in version from front side
- 4 Functions:
Appliance Inlet Protection class I, Fuseholder for fuse-links 5 x 20 mm 1- or 2-pole, with or without voltage selector (step switch), Line filter in standard and medical version
- Quick connect terminals or wires

Approvals

- VDE Certificate Number: 40004665 (FKE, FKF, FKV, FKW)
- UL File Number: E72928 (FKE, FKF, FKV, FKW)

Characteristics

- Rear side mounting for efficient cost-saving assembly
- Suitable for assembly in metal plated plastic housings
- All single elements are already wired
- Plug removal necessary for fuse-link replacement
- The fuse drawer "Fingergrasp" can be removed by hand
- For added safety "Extra-Safe" fuse drawers are available
- Fuse drawer meets requirements of medical standard IEC/EN 60601-1
- The fuseholder is accessible from the equipment front
- Qualified for use in equipment according IEC/EN 60950

Other versions on request

- Capacity CX 100 nF

References

Alternative: version without line filter [KEA](#)

Weblinks

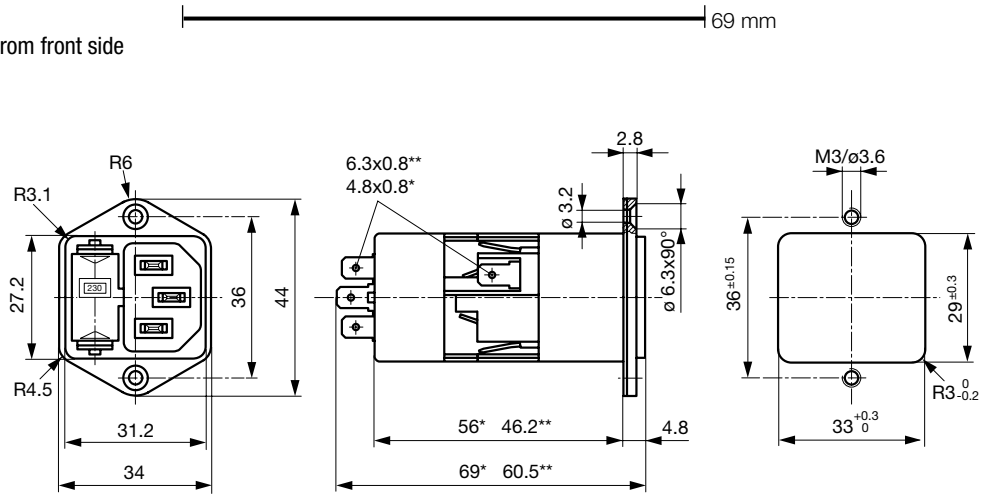
[pdf](#), [html](#), [General Product Information](#), [Approvals](#), [RoHS](#), [CHINA-RoHS](#), [Mating Connectors](#), [e-Store](#), [SCHURTER-Stock-Check](#), [Distributor-Stock-Check](#), [Accessories](#), [Wire Harness](#)

Technical Data

| | | | |
|---------------------------|--|-----------------------------------|---|
| Ratings IEC | 1 - 10A @ Ta 40 °C / 250 VAC; 50Hz | Appliance-Inlet/-Outlet | C14 acc. to IEC/EN 60320-1, UL 498, CSA C22.2 no. 42 (for cold conditions) pin-temperature 70 °C, 10A, Protection Class 1 |
| Ratings UL/CSA | 1 - 10A @ Ta 40 °C / 125 VAC; 60Hz | Fuseholder | 1 or 2 pole, Shocksafe category PC2 acc. to IEC 60127-6, for fuse-links 5 x 20mm |
| Leakage Current | standard < 0.5 mA (250 V / 60Hz) medical < 5 µA (250 V / 60 Hz) | Rated Power Acceptance @ Ta 23 °C | 5 x 20: 2W (1 pole)/ 1.6W (2-pole) per pole |
| Dielectric Strength | > 1.7 kVDC between L-N > 2.7 kVDC between L/N-PE Test voltage (2 sec) | Power Acceptance @ Ta > 23°C | Admissible power acceptance at higher ambient temperature see derating curves |
| Allowable Operation Temp. | -25°C to 85°C | Voltage Selectors | optional, step, 3 pos. |
| Climatic Category | 25/085/21 acc. to IEC 60068-1 | Line Filter | Standard and Medical Version, IEC 60939, IEC 60601-1, UL 1283, UL 544, EN 133 200, CSA C22.2 no. 8 Technical details |
| Degree of Protection | from front side IP 40 acc. to IEC 60529 | MTBF | > 1'700'000h acc. to MIL-HB-217 F |
| Protection Class | Suitable for appliances with protection class 1 acc. to IEC 61140 | | |
| Terminal | Quick connect terminals 6.3 x 0.8 mm Flexible wire AWG18, 150 mm | | |
| Panel Thickness s | Screw: max 8 mm Mounting screw torque max 0.5 Nm Snap-in: 0.8mm to 3mm | | |
| Material: Housing | Thermoplastic, black, UL 94V-0 | | |

Dimensions

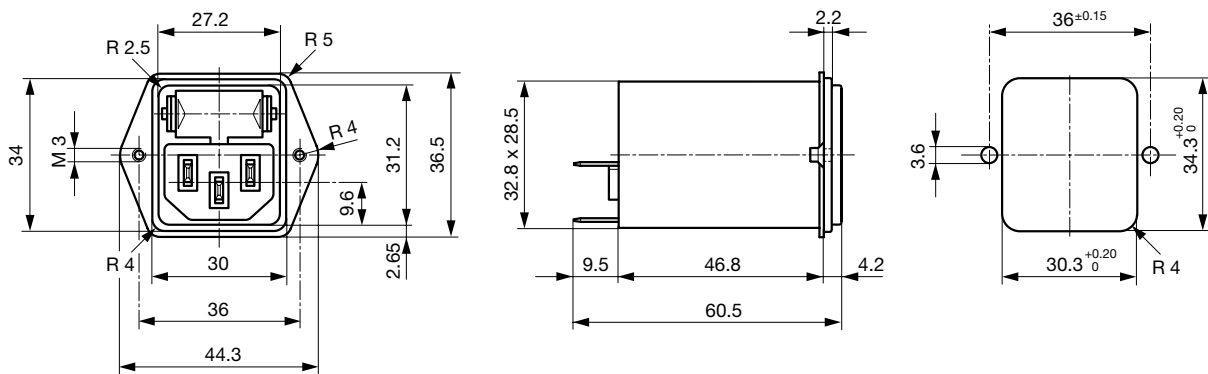
Screw-on mounting from front side



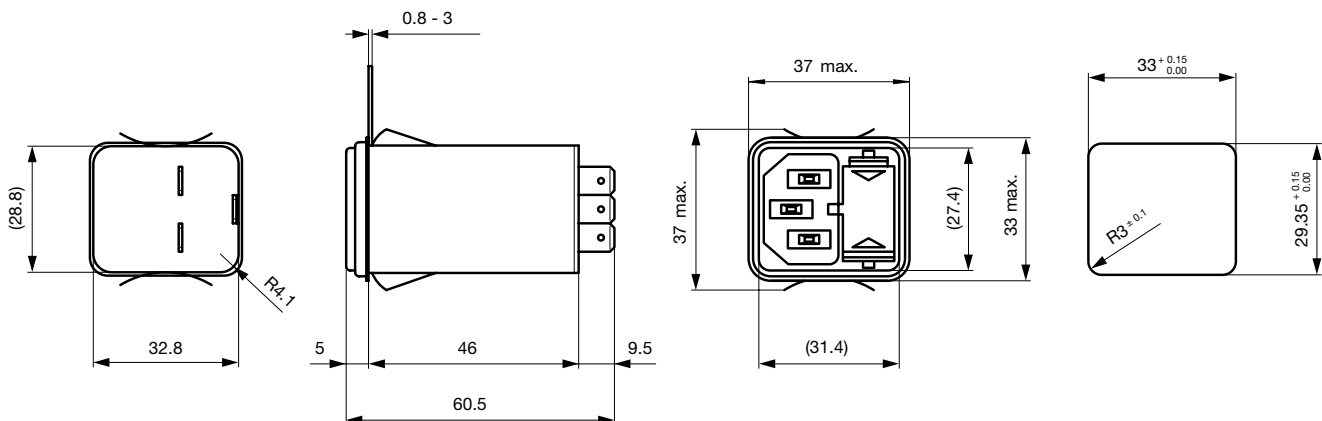
* with voltage selector

** without voltage selector

Screw-on mounting from rear side



Snap-in mounting

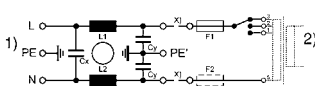


Technical Data of Filter-Components

| Rated Current [A] | Filter-Type | Inductances L [mH] | Capacitance CX [nF] | Capacitance CY [nF] | R [MΩ] |
|-------------------|-----------------------|--------------------|---------------------|---------------------|--------|
| 1 | Standard Version | 2 x 10 | 68 | 2.2 | - |
| 2 | Standard Version | 2 x 4 | 68 | 2.2 | - |
| 4 | Standard Version | 2 x 1.5 | 68 | 2.2 | - |
| 6 | Standard Version | 2 x 0.8 | 68 | 2.2 | - |
| 10 | Standard Version | 2 x 0.3 | 68 | 2.2 | - |
| 1 | Medical Version (M5) | 2 x 10 | 68 | - | 1 |
| 2 | Medical Version (M5) | 2 x 4 | 68 | - | 1 |
| 4 | Medical Version (M5) | 2 x 1.5 | 68 | - | 1 |
| 6 | Medical Version (M5) | 2 x 0.8 | 68 | - | 1 |
| 10 | Medical Version (M5) | 2 x 0.3 | 68 | - | 1 |
| 1 | Medical Version (M80) | 2 x 10 | 68 | 0.47 | 1 |
| 2 | Medical Version (M80) | 2 x 4 | 68 | 0.47 | 1 |
| 4 | Medical Version (M80) | 2 x 1.5 | 68 | 0.47 | 1 |
| 6 | Medical Version (M80) | 2 x 0.8 | 68 | 0.47 | 1 |

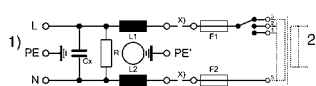
Diagrams

Standard version with voltage selector



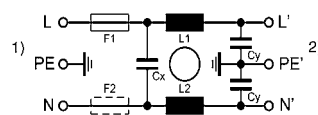
x) external connection to be made by the customer
 1) Line
 2) Load

Medical version with voltage selector



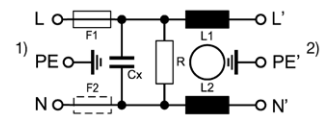
x) external connection to be made by the customer
 1) Line
 2) Load

Standard version without voltage selector



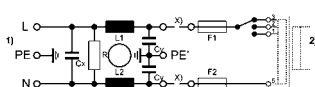
1) Line
 2) Load

Medical version (M5) without voltage selector



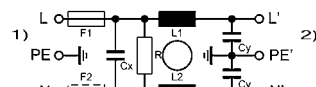
1) Line
 2) Load

Medical version (M80) with voltage selector



x) external connection to be made by the customer
 1) Line
 2) Load

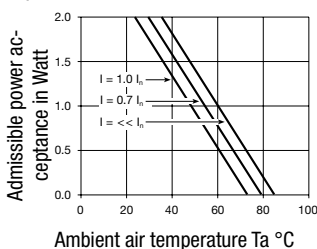
Medical version (M80) without voltage selector



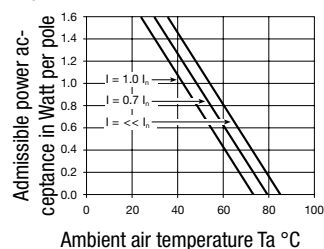
1) Line
 2) Load

Derating Curves

1-pole



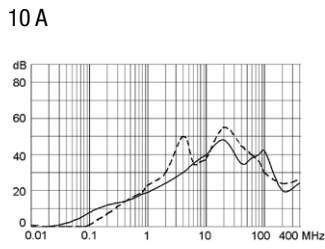
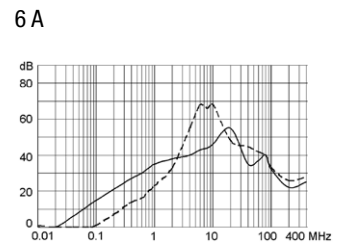
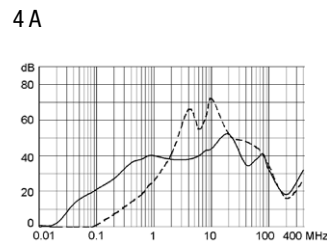
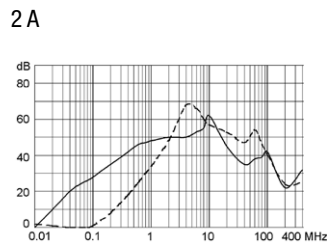
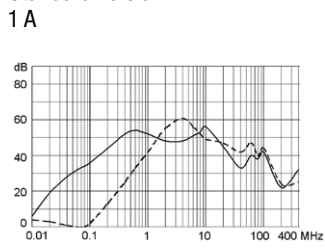
2-pole



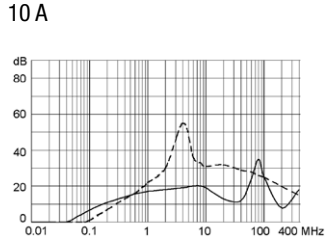
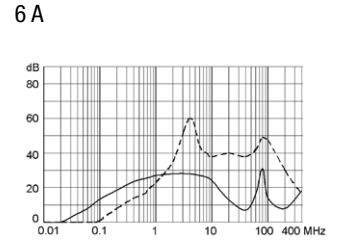
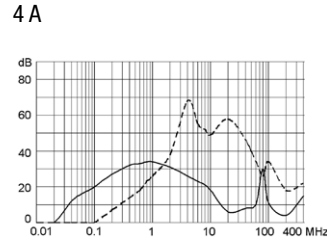
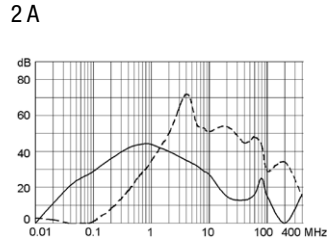
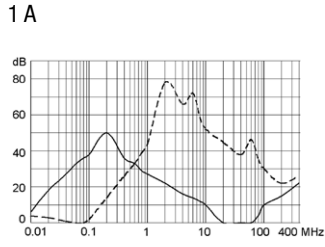
Attenuation Loss

Standard version

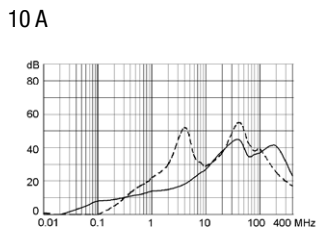
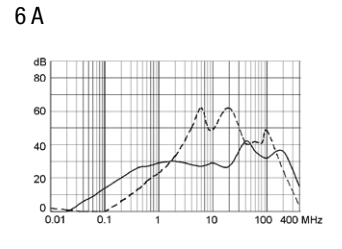
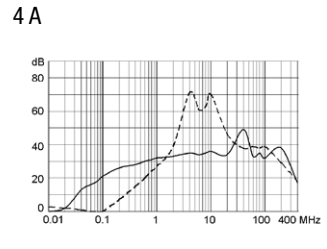
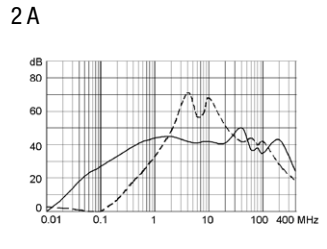
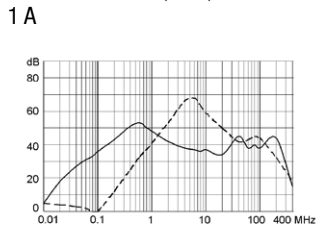
--- differential mode — common mode



Medical version (M5)



Medical version (M80)



Variants

Fuse drawer must be ordered separately (see accessories).

| Rated Current [A] | Filter-Type | Panel mounting | Mounting side | Fuseholder | Terminal | Voltage Selectors | Order Number |
|-------------------|-----------------------|----------------|---------------|------------|--------------------------------------|-------------------|--------------|
| 1 | Standard Version | Screw | Front-Side | 1-pole | Quick connect terminals 6.3 x 0.8 mm | - | 4301.5011 |
| 1 | Standard Version | Screw | Front-Side | 1-pole | Quick connect terminals 6.3 x 0.8 mm | 3 pos. | 4301.5051 |
| 1 | Standard Version | Screw | Front-Side | 2-pole | Quick connect terminals 6.3 x 0.8 mm | - | 4301.5001 |
| 1 | Standard Version | Screw | Front-Side | 2-pole | Quick connect terminals 6.3 x 0.8 mm | 3 pos. | 4301.5041 |
| 1 | Standard Version | Screw | Rear-Side | 2-pole | Quick connect terminals 6.3 x 0.8 mm | - | 4301.7001 |
| 2 | Standard Version | Screw | Front-Side | 1-pole | Quick connect terminals 6.3 x 0.8 mm | - | 4301.5012 |
| 2 | Standard Version | Screw | Front-Side | 1-pole | Quick connect terminals 6.3 x 0.8 mm | 3 pos. | 4301.5052 |
| 2 | Standard Version | Screw | Front-Side | 2-pole | Quick connect terminals 6.3 x 0.8 mm | - | 4301.5002 |
| 2 | Standard Version | Screw | Front-Side | 2-pole | Quick connect terminals 6.3 x 0.8 mm | 3 pos. | 4301.5042 |
| 2 | Standard Version | Screw | Rear-Side | 2-pole | Quick connect terminals 6.3 x 0.8 mm | - | 4301.7002 |
| 4 | Standard Version | Screw | Front-Side | 1-pole | Quick connect terminals 6.3 x 0.8 mm | - | 4301.5013 |
| 4 | Standard Version | Screw | Front-Side | 1-pole | Quick connect terminals 6.3 x 0.8 mm | 3 pos. | 4301.5053 |
| 4 | Standard Version | Screw | Front-Side | 2-pole | Quick connect terminals 6.3 x 0.8 mm | - | 4301.5003 |
| 4 | Standard Version | Screw | Front-Side | 2-pole | Quick connect terminals 6.3 x 0.8 mm | 3 pos. | 4301.5043 |
| 4 | Standard Version | Screw | Rear-Side | 1-pole | Quick connect terminals 6.3 x 0.8 mm | - | 4301.7013 |
| 4 | Standard Version | Screw | Rear-Side | 2-pole | Quick connect terminals 6.3 x 0.8 mm | - | 4301.7003 |
| 6 | Standard Version | Screw | Front-Side | 1-pole | Quick connect terminals 6.3 x 0.8 mm | - | 4301.5014 |
| 6 | Standard Version | Screw | Front-Side | 1-pole | Quick connect terminals 6.3 x 0.8 mm | 3 pos. | 4301.5054 |
| 6 | Standard Version | Screw | Front-Side | 2-pole | Quick connect terminals 6.3 x 0.8 mm | - | 4301.5004 |
| 6 | Standard Version | Screw | Front-Side | 2-pole | Quick connect terminals 6.3 x 0.8 mm | 3 pos. | 4301.5044 |
| 6 | Standard Version | Screw | Rear-Side | 1-pole | Quick connect terminals 6.3 x 0.8 mm | - | 4301.7014 |
| 6 | Standard Version | Screw | Rear-Side | 2-pole | Quick connect terminals 6.3 x 0.8 mm | - | 4301.7004 |
| 10 | Standard Version | Screw | Front-Side | 1-pole | Quick connect terminals 6.3 x 0.8 mm | - | 4301.5015 |
| 10 | Standard Version | Screw | Front-Side | 1-pole | Quick connect terminals 6.3 x 0.8 mm | 3 pos. | 4301.5055 |
| 10 | Standard Version | Screw | Front-Side | 2-pole | Quick connect terminals 6.3 x 0.8 mm | - | 4301.5005 |
| 10 | Standard Version | Screw | Front-Side | 2-pole | Quick connect terminals 6.3 x 0.8 mm | 3 pos. | 4301.5045 |
| 10 | Standard Version | Screw | Rear-Side | 1-pole | Quick connect terminals 6.3 x 0.8 mm | - | 4301.7015 |
| 10 | Standard Version | Screw | Rear-Side | 2-pole | Quick connect terminals 6.3 x 0.8 mm | - | 4301.7005 |
| 1 | Standard Version | Snap-in | Front-Side | 1-pole | Quick connect terminals 6.3 x 0.8 mm | - | 4301.6011 |
| 1 | Standard Version | Snap-in | Front-Side | 2-pole | Quick connect terminals 6.3 x 0.8 mm | - | 4301.6001 |
| 2 | Standard Version | Snap-in | Front-Side | 1-pole | Quick connect terminals 6.3 x 0.8 mm | - | 4301.6012 |
| 2 | Standard Version | Snap-in | Front-Side | 2-pole | Quick connect terminals 6.3 x 0.8 mm | - | 4301.6002 |
| 4 | Standard Version | Snap-in | Front-Side | 1-pole | Quick connect terminals 6.3 x 0.8 mm | - | 4301.6013 |
| 4 | Standard Version | Snap-in | Front-Side | 2-pole | Quick connect terminals 6.3 x 0.8 mm | - | 4301.6003 |
| 6 | Standard Version | Snap-in | Front-Side | 1-pole | Quick connect terminals 6.3 x 0.8 mm | - | 4301.6014 |
| 6 | Standard Version | Snap-in | Front-Side | 2-pole | Quick connect terminals 6.3 x 0.8 mm | - | 4301.6004 |
| 10 | Standard Version | Snap-in | Front-Side | 1-pole | Quick connect terminals 6.3 x 0.8 mm | - | 4301.6015 |
| 10 | Standard Version | Snap-in | Front-Side | 2-pole | Quick connect terminals 6.3 x 0.8 mm | - | 4301.6005 |
| 1 | Medical Version (M5) | Screw | Front-Side | 2-pole | Quick connect terminals 6.3 x 0.8 mm | 3 pos. | 4301.5241 |
| 1 | Medical Version (M5) | Screw | Rear-Side | 2-pole | Quick connect terminals 6.3 x 0.8 mm | - | 4301.7201 |
| 2 | Medical Version (M5) | Screw | Front-Side | 2-pole | Quick connect terminals 6.3 x 0.8 mm | 3 pos. | 4301.5243 |
| 2 | Medical Version (M5) | Screw | Rear-Side | 2-pole | Quick connect terminals 6.3 x 0.8 mm | - | 4301.7203 |
| 4 | Medical Version (M5) | Screw | Front-Side | 2-pole | Quick connect terminals 6.3 x 0.8 mm | 3 pos. | 4301.5245 |
| 4 | Medical Version (M5) | Screw | Rear-Side | 2-pole | Quick connect terminals 6.3 x 0.8 mm | - | 4301.7205 |
| 6 | Medical Version (M5) | Screw | Front-Side | 1-pole | Quick connect terminals 6.3 x 0.8 mm | - | 4301.5217 |
| 6 | Medical Version (M5) | Screw | Front-Side | 2-pole | Quick connect terminals 6.3 x 0.8 mm | 3 pos. | 4301.5247 |
| 6 | Medical Version (M5) | Screw | Rear-Side | 2-pole | Quick connect terminals 6.3 x 0.8 mm | - | 4301.7207 |
| 10 | Medical Version (M5) | Screw | Front-Side | 2-pole | Quick connect terminals 6.3 x 0.8 mm | - | 4301.5209 |
| 10 | Medical Version (M5) | Screw | Rear-Side | 2-pole | Quick connect terminals 6.3 x 0.8 mm | - | 4301.7209 |
| 1 | Medical Version (M5) | Snap-in | Front-Side | 2-pole | Quick connect terminals 6.3 x 0.8 mm | - | 4301.6201 |
| 2 | Medical Version (M5) | Snap-in | Front-Side | 2-pole | Quick connect terminals 6.3 x 0.8 mm | - | 4301.6203 |
| 4 | Medical Version (M5) | Snap-in | Front-Side | 2-pole | Quick connect terminals 6.3 x 0.8 mm | - | 4301.6205 |
| 1 | Medical Version (M80) | Screw | Rear-Side | 2-pole | Quick connect terminals 6.3 x 0.8 mm | - | 4301.7202 |
| 2 | Medical Version (M80) | Screw | Front-Side | 2-pole | Quick connect terminals 6.3 x 0.8 mm | 3 pos. | 4301.5244 |

| Rated Current [A] | Filter-Type | Panel mounting | Mounting side | Fuseholder | Terminal | Voltage Selectors | Order Number |
|-------------------|-----------------------|----------------|---------------|------------|--------------------------------------|-------------------|--------------|
| 2 | Medical Version (M80) | Screw | Rear-Side | 2-pole | Quick connect terminals 6.3 x 0.8 mm | - | 4301.7204 |
| 4 | Medical Version (M80) | Screw | Front-Side | 2-pole | Quick connect terminals 6.3 x 0.8 mm | - | 4301.5206 |
| 4 | Medical Version (M80) | Screw | Rear-Side | 2-pole | Quick connect terminals 6.3 x 0.8 mm | - | 4301.7206 |
| 6 | Medical Version (M80) | Screw | Rear-Side | 2-pole | Quick connect terminals 6.3 x 0.8 mm | - | 4301.7208 |
| 4 | Medical Version (M80) | Snap-in | Front-Side | 2-pole | Quick connect terminals 6.3 x 0.8 mm | - | 4301.6206 |

Wire lenght: 150 mm

Packaging unit 10 Pcs

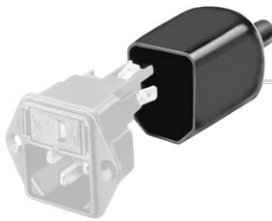
Required Accessory

Description

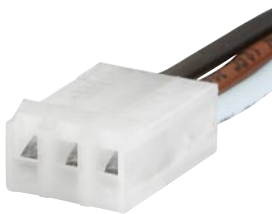


Fusedrawer 2
Fusedrawer with and without Voltage Selector Insert

Accessories



Assorted Covers
Rear Cover



Wire Harness
Wire harness for SCHURTER products



Cord retaining kits
Cord retaining strain relief

Mating Outlets/Connectors

Category / Description



[Appliance Outlet Overview complete](#)

| | |
|---|------|
| IEC Appliance Outlet F, Screw-on Mounting, Front Side, Solder Terminal | 4787 |
| IEC Appliance Outlet F, Snap-in Mounting, Front Side, Solder or Quick-connect Terminal | 4788 |
| IEC Appliance Outlet F or H, Screw-on Mounting, Front Side, Solder, PCB or Quick-connect Terminal | 5091 |
| IEC Appliance Outlet F or H, Screw-on Mounting, Front Side, Solder or Quick-connect Terminal | 5092 |

[Appliance Outlet further types to KFA](#)

[Connector Overview complete](#)



| | |
|--|--------|
| IEC Connector C15, Rewireable, Straight | 0101 |
| IEC Connector C15A, Rewireable, Straight | 0102 |
| IEC Connector C15A, Rewireable, Straight | 0102-G |
| IEC Connector C15A, Rewireable, Angled | 0112 |
| IEC Connector C13, Rewireable, Angled | 4012 |

[Connector further types to KFA](#)

...

[Power Cord Overview complete](#)



| | |
|---|------|
| Power Cord with IEC Connector C13, Angled | 0311 |
| Power Cord with IEC Connector C13, Angled | 3011 |
| Power Cord with IEC Connector C13, Angled | 3012 |
| Power Cord with IEC Connector C13, Angled | 3013 |
| Power Cord with IEC Connector C13 | 3020 |

[Power Cord further types to KFA](#)

...