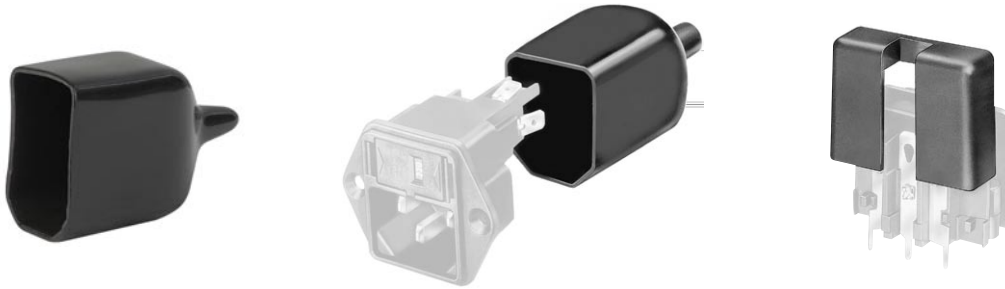


Rear Cover



E.g. KEA with rear cover

E.g. Rear cover for GSF1

**Description**

- Component:
Press-Fit Version, Rear Mounting
- 1 Function:

References**Weblinks**

[pdf](#), [html](#), [General Product Information](#), [Approvals](#), [RoHS](#), [CHINA-RoHS](#), [Mating Connectors](#), [e-Store](#), [SCHURTER-Stock-Check](#), [Distributor-Stock-Check](#), [Accessories](#)

The terminals of the Schurter appliance couplers can be protected against unintentional contact by the use of an insulation cover. They are made of black PVC and can be easily mounted from the rear to the corresponding appliance couplers.

Variants

Suitable for	Order Number
GSF1	0098.0078
C20F, DC11, KEA, KEB1, 1092, 4707, 4721, 4723, 4793, 4798, 5130, 5707, 6200, 6202, 6205, 6220, 6600-3, 6600-4, 6600-9, 6602-4	0859.0047
FGS, KFS, KFX, 5003, 5110, 5120, 6067, 6100-3, 6100-4, 6100-9, 6102-3, 6102-5, 6102-9	0859.0048
KEC, KFA, KFB2, KFC	0859.0072
FKG, FKH, FKHD, FKI, FKID, KD, KM, 5145, 6135, 6145	0859.0074
KEB1, KEB2, KFB1, 0723, 4719, 4797, 5200, 5220	0859.0075
DD12, EC11, KE, KM, KMF	0859.0076
CD	0859.0077
8843.FL, 8843.FLR	0859.0086
CE, EC12	0859.0108
CG, DF11, DF12, EF11, EF12, KG	0859.0109
1061, 6010, 6015, 6061, 6062, 6063, 6065, 6066, 6067, 6100-3, 6100-4, 6102-3, 6102-5, 6110-3, 6110-4, 6120-3, 6120-5	4311.9401
1061, 6010, 6015, 6061, 6062, 6063, 6065, 6066, 6067, 6100-3, 6100-4, 6102-3, 6102-5, 6110-3, 6110-4, 6120-3, 6120-5	4311.9402
DC11, KEA, KEB1, 1060, 1062, 1064, 1065, 1066, 1074, 1092, 4707, 6200, 6202, 6205, 6220	4311.9403
6010, 6015, 6061, 6062, 6063, 6065, 6066, 6067, 6100-3, 6100-4, 6102-3, 6102-5, 6110-3, 6110-4, 6120-3, 6120-5	4311.9404
2572, 2573, 2574, 2576, 2577	4311.9405

Packaging unit 100 Pcs