

CC3000 FRAM Evaluation Module Kit Status: ACTIVE

CC3000-FRAM-EMK

[Description/Features](#)

[Technical Documents](#)

[Support & Community](#)

[Order Now](#)

Description

The CC3000 FRAM Evaluation Module Kit is a full turn-key TI Wi-Fi evaluation and demonstration tool for the MSP430 FRAM MCUs and TI's SimpleLink Wi-Fi that includes all of the necessary hardware and software to get started quickly. SimpleLink™ CC3000 Wi-Fi is a self-contained wireless solution that simplifies the process of implementing Internet connectivity. SimpleLink Wi-Fi minimizes host microcontroller (MCU) software requirements making it the ideal solution for embedded applications using any low-cost/low-power MCU. The kit also allows users to take advantage of the new generation of MSP430 microcontroller devices with integrated Ferroelectric Random Access Memory (FRAM).

This kit includes several Hardware and Software Tools:

Hardware

- LSR TiWi-SL module & EM board
- Murata TypeVK module & EM board
- Wi-Fi Access Point
- MSP430 FRAM Experimenter Board (MSP-EXP430FR5739)

Software

- Sensor application: Transfer temperature and accelerometer data and show effects of data crossing a threshold

For other sample applications and more details please visit our WiFi FRAM kit [wiki](#) or visit our E2E [Wireless Connectivity Forum](#).

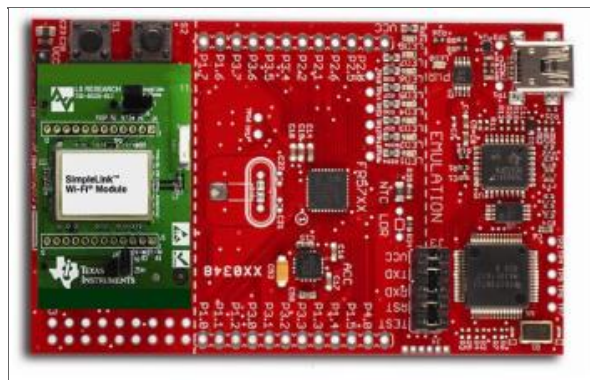
The full specification, design guides, and purchasing information for:

1. LSR's TiWi-SL module can be found [here](#).
2. Murata's TypeVK module can be found [here](#).

More information on TI's wireless platform solutions can be found on TI's Wireless Connectivity Wiki (www.ti.com/connectivitywiki).

Features

- Embedded Wi-Fi and networking software including drivers, stack, and supplicant
- Universal IP connectivity enabled anywhere
- Pair easily with low-memory, low-cost, low-power microcontroller systems
- Implement Wi-Fi quickly without previous Wi-Fi or RF experience
- Credible, proven solution with best-in-class link budget
- Longer range than competitors, reliable coverage throughout the entire house
- Proven Wi-Fi interoperability
- Complete platform solution and certified modules
- Get started quickly with sample applications on multiple platforms
- Comprehensive documentation and support community
- Wi-Fi, FCC/IC/ETSI certified
- Porting documentation available to allow MCU flexibility



Order Now

Part Number	Texas Instruments	Authorized Distributors	Status	Price (US\$)
CC3000FRAMEMK: CC3000 FRAM Evaluation Module Kit	TI eStore	Buy from distributor	ACTIVE	\$199.00
	Contact a Distributor - Select a location -			<input type="button" value="Go"/>

Related Products

Name	Part Number	Tool Type
MSP-EXP430FR5739 Experimenter Board	MSP-EXP430FR5739	Development Boards/EVMs
Name	Part Number	Software Type
WiFi sample software and Wiki documentation for TI's MSP430FRAM devices	CC3000-FRAM-SW	Application Software
Part Number	Name	Product Family
CC3000-TIWI-SL	SimpleLink WiFi Module from LS Research	Mesh and IP Networks
CC3000-TYPEVK	SimpleLink WiFi Module from Murata	Mesh and IP Networks
MSP430FR5739	MSP430FR573x, MSP430FR572x Mixed Signal Microcontroller	MSP430™ 16-bit Ultra-Low Power MCUs

Videos

Support and Community

Customer Tags

Most Popular Tags for CC3000-FRAM-EMK:

[simplelink](#) (1)

[View All Tags](#)

[Create a Tag](#)

Your History

Products You Recently Viewed

There are no items in your history.