

## Refill instructions Epson T0611 | T0612 | T0613 | T0614 | T0615

Please carefully read these instructions before refilling your ink cartridges. Always carry out the ink refill process on a dirt resistant mat and have a moist cloth to hand to quickly remove any ink spillage. The instructions apply only to the ink cartridges referred to above. The syringe and ink should be kept away from children. We accept no responsibility for any damage caused by inadequate or incorrect actions carried out during the refilling process. The refilling of ink cartridges is carried out at your own risk. An empty ink cartridge of this type can be refilled with approximately 8 ml of ink.



In order to refill an ink cartridge, a syringe filled with ink is required. Open the cap of one of the enclosed ink holders, which also acts as a syringe. Now insert the enclosed blunt needle using a twisting motion into the opening. Hold the lower part of the ink holder with your thumb and forefinger and twist it counter clockwise into the appliance.



Then seal the ink outlet opening with an adhesive tape and place the ink cartridge in an upright position.



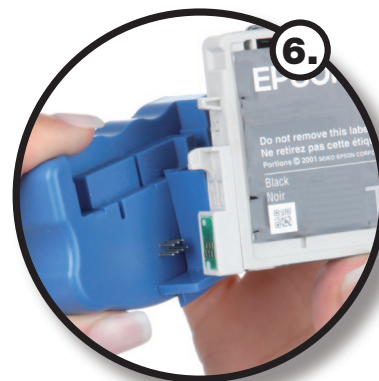
Next, using the tool provided, drill a hole approximately 7 mm deep through the designated opening. Drill carefully, as there are 2 inner walls to drill through.



Now insert the syringe into the newly made opening and fill the ink chamber slowly and carefully until just below the opening. Should some of the ink leak out, simply remove it by using the syringe.



Seal the newly drilled hole with an adhesive strip and then leave the ink cartridge for a few hours to allow the ink enough time to spread throughout the ink chamber.



Finally, the ink cartridge chip ink fluid level reading needs to be reset. In order to do this, press the reset device (not included with the refill kit set) pins against the ink cartridge chip contact. After removing the adhesive tape from the ink outlet area, the refilled ink cartridge can then be inserted into the printer. Please be aware of the possibility of ink leakage.