

ALUSTAR 1W | 30°

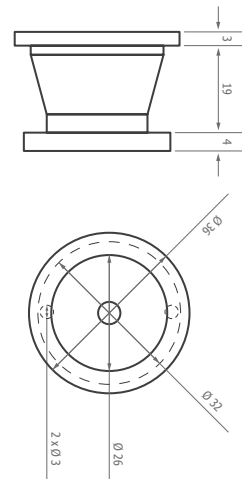
- Verschiedene Abstrahlwinkel
- Anschlussfertige Modultechnik
- Stabiles Wärmemanagement
- Schutzklasse IP65
- Many different angles
- Ready to use modular technology
- Stable thermal management
- Ingress protection IP65



Für Montage- und Sicherheitshinweise siehe www.ledxon.de/downloads / For assembly- and safety information see www.ledxon.com/downloads

Dimensions in mm

| | |
|---|------------------------------------|
| Betriebsstrom DC / Operating current | 350mA |
| Typ. Leistung / Wattage | 1 W |
| Elektrischer Anschluss / Electrical source | only use with 350mA current source |
| LED Typ / LED type | Edison® Edixeon® |
| Abstrahlwinkel / Angle | 30° |
| Schutzart / Ingress protection | IP65 |
| Dimmung / Dimming | Current reduction / PWM |
| max. Sperrspannung / Reverse voltage | 5V |
| Betriebstemperatur / Operating temperature | -20°C - +40°C |



| Artikelbez. Discription | Art.-Nr. Part.-No. | Lichtfarbe Light colour | Color temp. (K)* Wavelength (nm)* | Lumen* Luminance | Spannung Voltage | | CRI* |
|----------------------------|-----------------------|----------------------------|--------------------------------------|---------------------|------------------|------|------|
| | | | | | min. | max. | |
| Alustar 1W 30° | 9008080 | ww | 2700K | 66lm | 2.8V | 3.5V | 75 |
| Alustar 1W 30° | 9008198 | nw | 4300K | 66lm | 2.8V | 3.5V | 75 |
| Alustar 1W 30° | 9008079 | cw | 6000K | 100lm | 2.8V | 3.5V | 75 |
| Alustar 1W 30° | 9008081 | red | 623nm | 51.2lm | 2.0V | 3.0V | - |
| Alustar 1W 30° | 9008083 | yellow | 592nm | 60lm | 2.0V | 3.0V | - |
| Alustar 1W 30° | 9008084 | green | 525nm | 86.5lm | 2.8V | 3.5V | - |
| Alustar 1W 30° | 9008082 | blue | 470nm | 23.3lm | 2.8V | 3.5V | - |

* Werte können durch Schwankungen im Herstellungsprozess abweichen / Technical variations possible, based on production tolerances