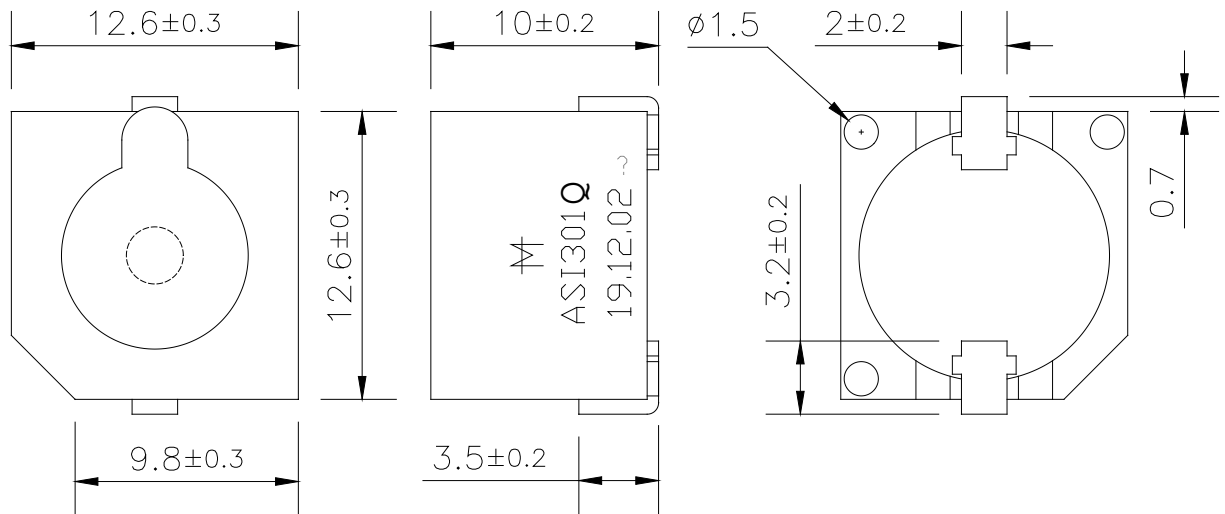


**Specifications:**

|                                |   |
|--------------------------------|---|
| Resonant Frequency (Hz)        | 2400 ± 300  |
| Operating Voltage (Vdc)        | 4.0 ~ 7.0   |
| Rated Voltage (Vdc)            | 5.0   |
| Current Consumption Max. (mA)  | 30 at Rated Voltage                                     |
| Sound Pressure Level Min. (dB) | 90 at 10cm at Rated Voltage                             |
| Tone/Pulse Rate                | Constant  |
| Operating Temperature (°C)     | -20 ~ +70   |
| Storage Temperature (°C)       | -30 ~ +80   |
| Housing                        | PPO plastic resin<br>(Color: Gray)                      |
| Type of Connection Terminals   | SMD – GOLD plated terminals as of<br>Code Date 20100825 |
| Weight (Grams)                 | 3.0   |
| Options                        | For other options contact factory                       |

**Dimensions:** (units: mm)

**RoHS Compliant**



**Recommended PCB Layout**

