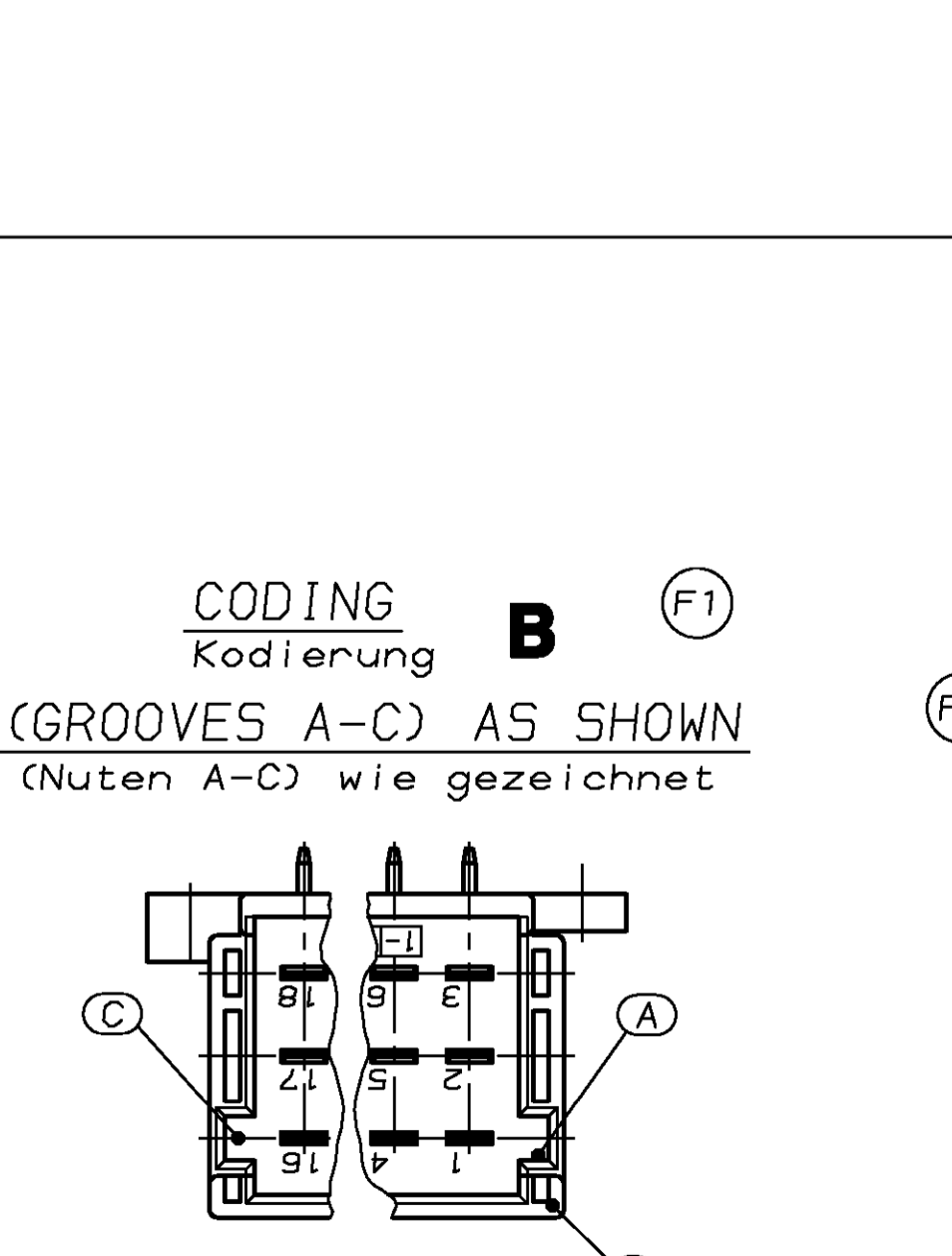
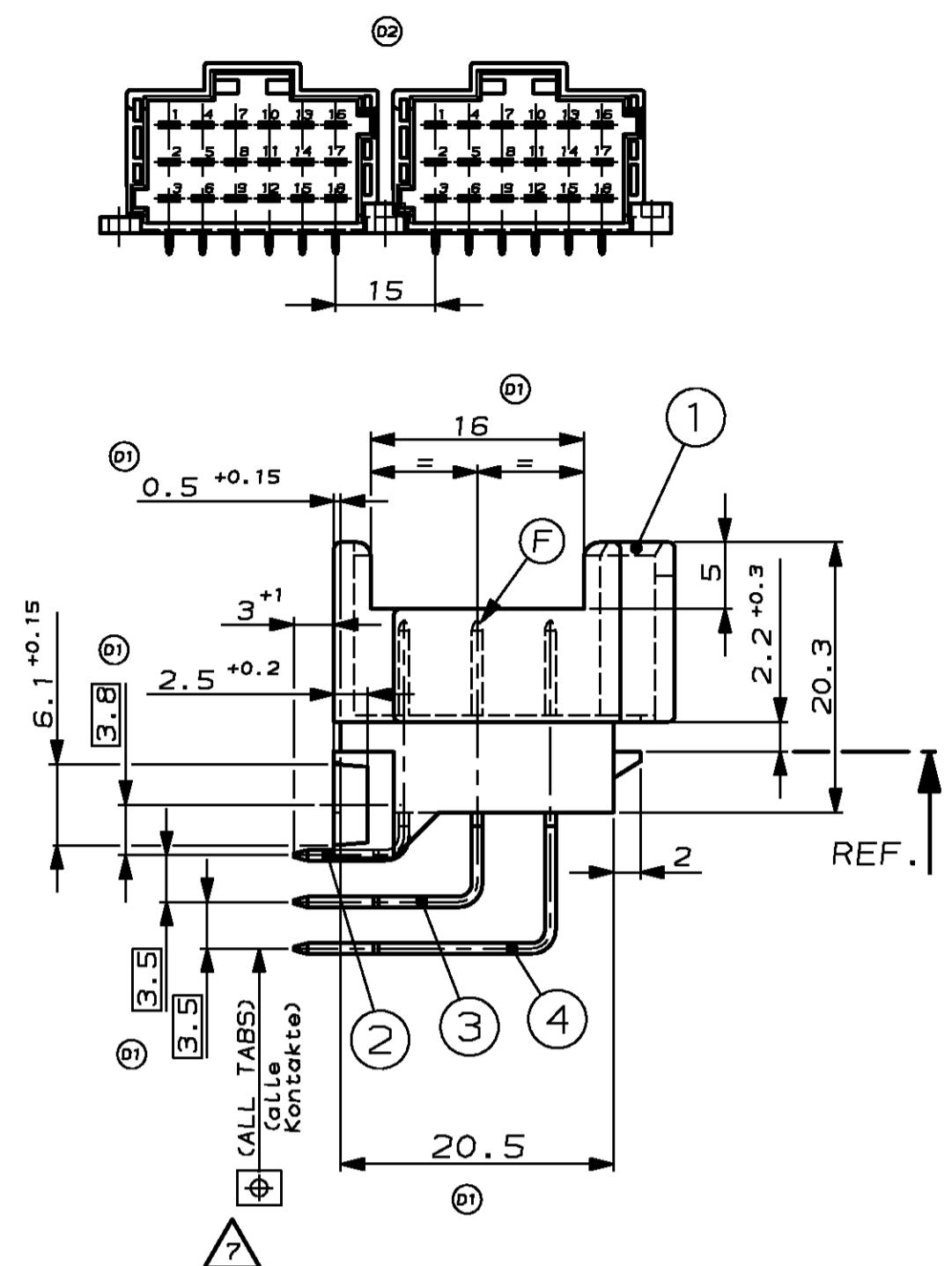
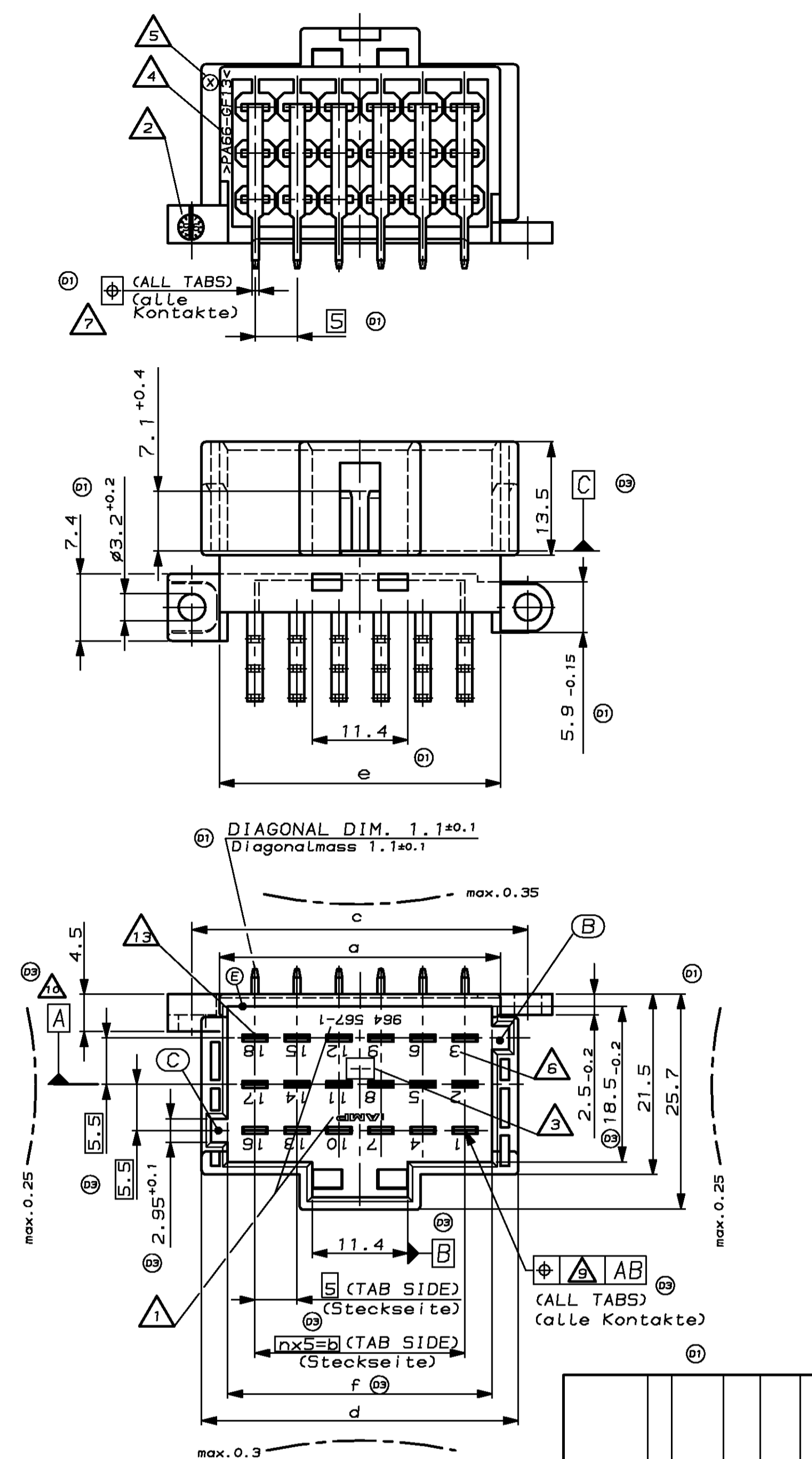


LOC.	DIST.	REV. LTR.	DESCRIPTION	DATE	DWN.	APP'D.
AI	-					
PROJECT NO. A93-52045						
		C1	CODING A-D DELETED, REVISION STATUS CORRECTED	19.12.94	Kiltz	-
		D1	DIM.'S, TOLER.'S ADDED OR CHANGED, 2 CODINGS DELETED	01.10.96	Huebner	-
		D2	LINE UP PICTURE AND PINHOLE IMAGE FOR PCB ADDED	12.02.97	Huebner	-
		D3	SEV. DIM.'S, TOLER.'S, NOTES 8-10 ADDED OR CHANGED	17.07.97	Huebner	-
		E	INSERTION CHAMFER REMOVED AT ONE SIDE NOTE 12 AND 13 ADDED - NOTE 11 CHANGED	20. AUG 99	BarLoch	Hoss
		E1	NEW PINS FOR ONE-WAY PACKAGE ADDED (SEE PCN, E600-2329-99-1)	30-NOV-99	KreIner	Hoss
		F	SHAPE OF TAB TIPS CHANGED	26-AUG-02	Huebner	Hoss
		F1	NEW PINS ADDED	30-JAN-06	Goetz	Barwin

SCALE 1:1
 M 1:1



- 1 WITH CODING mit Kodierung **A**
 (GROOVES B-C) AS SHOWN
 (Nuten B-C) wie gezeichnet

POSITIONS Polzahl	n	a ±0.2	b	c	d ±0.2	e ±0.25	f										
21	6	38.5	30	45	42.5	38.5	36.5	B (GROOVES) Nuten A-C		8-966140-6 A	1-966140-6 A	18.3g	4	7	TAB (43.4mm)	CuSn4	TINNED/verzint
										9-966140-6 F	966140-6 F		3	7	TAB (34.4mm)	CuSn4	TINNED/verzint
18	5	33.5	25	40	37.5	33.5	31.5	A (GROOVES B-C) (Nuten B-C)		9-966140-1 F	966140-1 F	16.0g	4	6	TAB (43.4mm)	CuSn4	TINNED/verzint
										9-966140-2 F	966140-2 F		3	6	TAB (34.4mm)	CuSn4	TINNED/verzint
										9-966140-1 F	966140-1 F		2	6	TAB (25.4mm)	CuSn4	TINNED/verzint
15	4	28.5	20	35	32.5	28.5	26.5	B (GROOVES) Nuten A-C		9-966140-2 F	966140-2 F	13.6g	2	5	TAB (25.4mm)	CuSn4	TINNED/verzint
										9-966140-3 A	1-966140-3 A		1	1	15 POS. HOUSING	PA66-GF13	BLACK/schwarz
12	3	23.5	15	30	27.5	23.5	21.5	B (GROOVES) Nuten A-C		8-966140-3 A	1-966140-3 A	11.2g	4	4	TAB (43.4mm)	CuSn4	TINNED/verzint
										9-966140-3 F	966140-3 F		3	4	TAB (34.4mm)	CuSn4	TINNED/verzint
										9-966140-3 F	966140-3 F		2	4	TAB (25.4mm)	CuSn4	TINNED/verzint
9	2	18.5	10	25	22.5	18.5	16.5	B (GROOVES B-C) (Nuten B-C)		9-966140-3 F	966140-3 F	11.2g	1	1	12 POS. HOUSING	PA66-GF13	BLACK/schwarz
										9-966140-4 F	966140-4 F		4	3	TAB (43.4mm)	CuSn4	TINNED/verzint
										9-966140-4 F	966140-4 F		3	3	TAB (34.4mm)	CuSn4	TINNED/verzint
6	1	13.5	5	20	17.5	13.5	11.5	A (GROOVES) Nuten A-C		9-966140-4 F	966140-4 F	8.9g	2	2	TAB (25.4mm)	CuSn4	TINNED/verzint
										9-966140-5 F	966140-5 F		4	2	TAB (43.4mm)	CuSn4	TINNED/verzint
										9-966140-5 F	966140-5 F		3	2	TAB (34.4mm)	CuSn4	TINNED/verzint
6	1	13.5	5	20	17.5	13.5	11.5	A (GROOVES) Nuten A-C		9-966140-5 F	966140-5 F	6.6g	2	2	TAB (25.4mm)	CuSn4	TINNED/verzint
										9-966140-5 F	966140-5 F		1	1	6 POS. HOUSING	PA66-GF13	BLACK/schwarz

- REMARKS
 Bemerkungen
- 1 AMP-LOGO, PART NUMBER HOUSING
AMP-Logo und Gehäuse-Teilernr.
 - 2 PRODUCTION DATE HOUSING
Produktionsdatum Gehäuse
 - 3 MOULD REVISION STATUS
Aenderungsstand Spritz-Werkzeug
 - 4 MATERIAL MARKING IN ACC. TO VDA 260
Werkstoffkennzeichnung nach VDA 260
 - 5 MOULD CAVITY MARKING
Nestmarkierung
 - 6 CAVITY MARKING
Kammerbezeichnung
 - 7 CHECK WITH GAUGE NO. 90-244507 (SOLDER TABS)
SIDE, DIM.'s NOT IN GENERAL TOLERANCES)
Pruefung mit Stecklehre 90-244507 (Loetseite,
Masse unterliegen nicht der Allgemeintoleranz)
 - 8 REFERENCE PLANE A RESULTS FROM AVERAGE OF TAB POSI-
TIONS OF MIDDLE ROW AT THE LEVEL OF REFERENCE PLANE C
Bezugsebene A gemittelt aus Positionen der Tabs
der mittleren Reihe auf Niveau der Bezugsebene C
 - 9 LINEAR INCREASING FROM Ø0.2 AT THE LEVEL OF
REFERENCE PLANE C UP TO Ø0.4 AT THE TOP OF TABS
Linear zunehmend von Ø0.2 auf Niveau Bezugsebene
C bis auf Ø0.4 an Tabspitzen
 - 10 ALL SYMMETRIC DIMENSIONS ± 0.15
Alle Symmetriemasse ± 0.15
 - 11 SUITABLE MATING CONNECTOR SEE DRAWINGS.
Passende Gegenstecker siehe Zeichnungen:
tyco AMP-Nr.: 1355071, 1355073
 - 12 DOMESTIC PACKAGING (GERMANY): PLASTIC TRAY (ANTISTATIC) IN CORRUGATED SHIPPING BOX
Inlands-Verpackung (BRD): Produkttraeger (antistatisch) in Versandkarton
 - 13 TAB-INTERFACE ON INQUIRY, tyco AMP-No.:
Flachstecker-Ausfuhrung auf Anfrage; tyco AMP-Nr.: 114-18230-002
 - 14 EXPORT PACKAGING: PLASTIC TRAY (NOT ANTISTATIC) IN CORRUGATED SHIPPING BOX
Export-Verpackung: Produkttraeger (nicht antistatisch) in Versandkarton
 - 15 AVAILABILITY ONLY AFTER RECONSULTING TYCO!
Verfuegbarkeit nur nach Ruecksprache mit Tyco!

⑩ PINHOLE IMAGE FOR PRINTED CIRCUIT BOARD
 Leiterplatten-Lochbild

